



2024

TrailLink Unlimited 

Guides



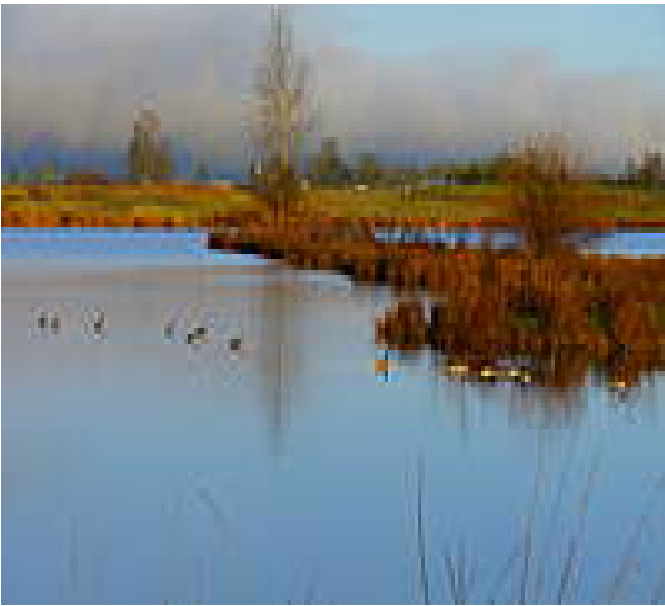
Jessen Path
Oregon



Jessen Path

Oregon

The Jessen Path is a short, concrete trail for cyclists and pedestrians that runs along Jessen Drive in northwestern Eugene.



The Jessen Path is a short, concrete trail for cyclists and pedestrians that runs along Jessen Drive in northwestern Eugene. The trail, constructed in 2018, gives nearby residents a nice, smooth pathway for exercise and recreation, and provides access to Golden Gardens Park and the small lake of the same name - keep your eye out for a variety of local wildlife near the lake, such as beavers and herons. On the trail's eastern end, you can connect with the [Randy Pape Beltline Path](#), which travels north and south along the roadway.



Jessen Path

Oregon

States: Oregon

Counties: Lane

Length: 1.4miles

Trail end points: Ohio St. to Randy Pape
Beltline

Trail surfaces: Concrete

Trail category: Greenway/Non-RT

Trail activities: Bike, Inline
Skating, Wheelchair Accessible, Walking

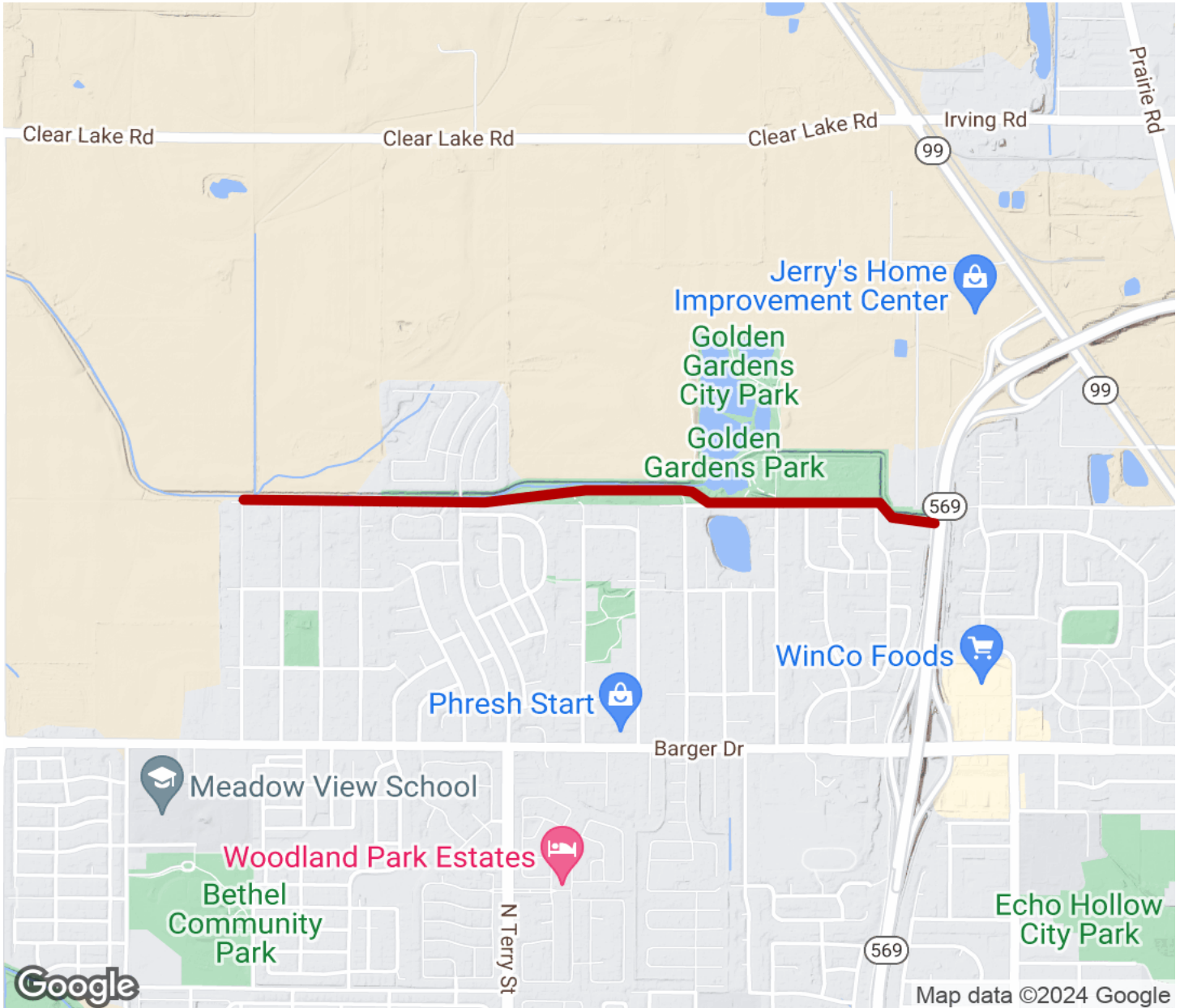
Parking & Trail Access

No dedicated trail parking is available; parking may be available on nearby streets, but be sure to follow any posted parking signs and regulations.



Jessen Path

Oregon



Trailhead



Restroom



Parking



Water Fountain



Tunnel



TrailLink
by Rails-to-Trails Conservancy

TrailLink.com