



2024

TrailLink Unlimited 

Guides



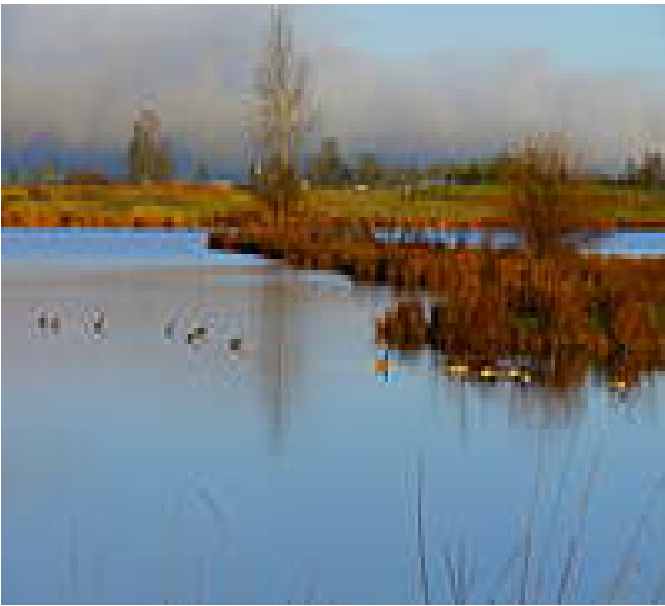
**Jessen Path**  
*Oregon*



## Jessen Path

Oregon

*The Jessen Path is a short, concrete trail for cyclists and pedestrians that runs along Jessen Drive in northwestern Eugene.*



The Jessen Path is a short, concrete trail for cyclists and pedestrians that runs along Jessen Drive in northwestern Eugene. The trail, constructed in 2018, gives nearby residents a nice, smooth pathway for exercise and recreation, and provides access to Golden Gardens Park and the small lake of the same name - keep your eye out for a variety of local wildlife near the lake, such as beavers and herons. On the trail's eastern end, you can connect with the [Randy Pape Beltline Path](#), which travels north and south along the roadway.



## Jessen Path

Oregon

**States:** Oregon

**Counties:** Lane

Length: 1.4miles

**Trail end points:** Ohio St. to Randy Pape  
Beltline

**Trail surfaces:** Concrete

**Trail category:** Greenway/Non-RT

**Trail activities:** Bike, Inline  
Skating, Wheelchair Accessible, Walking

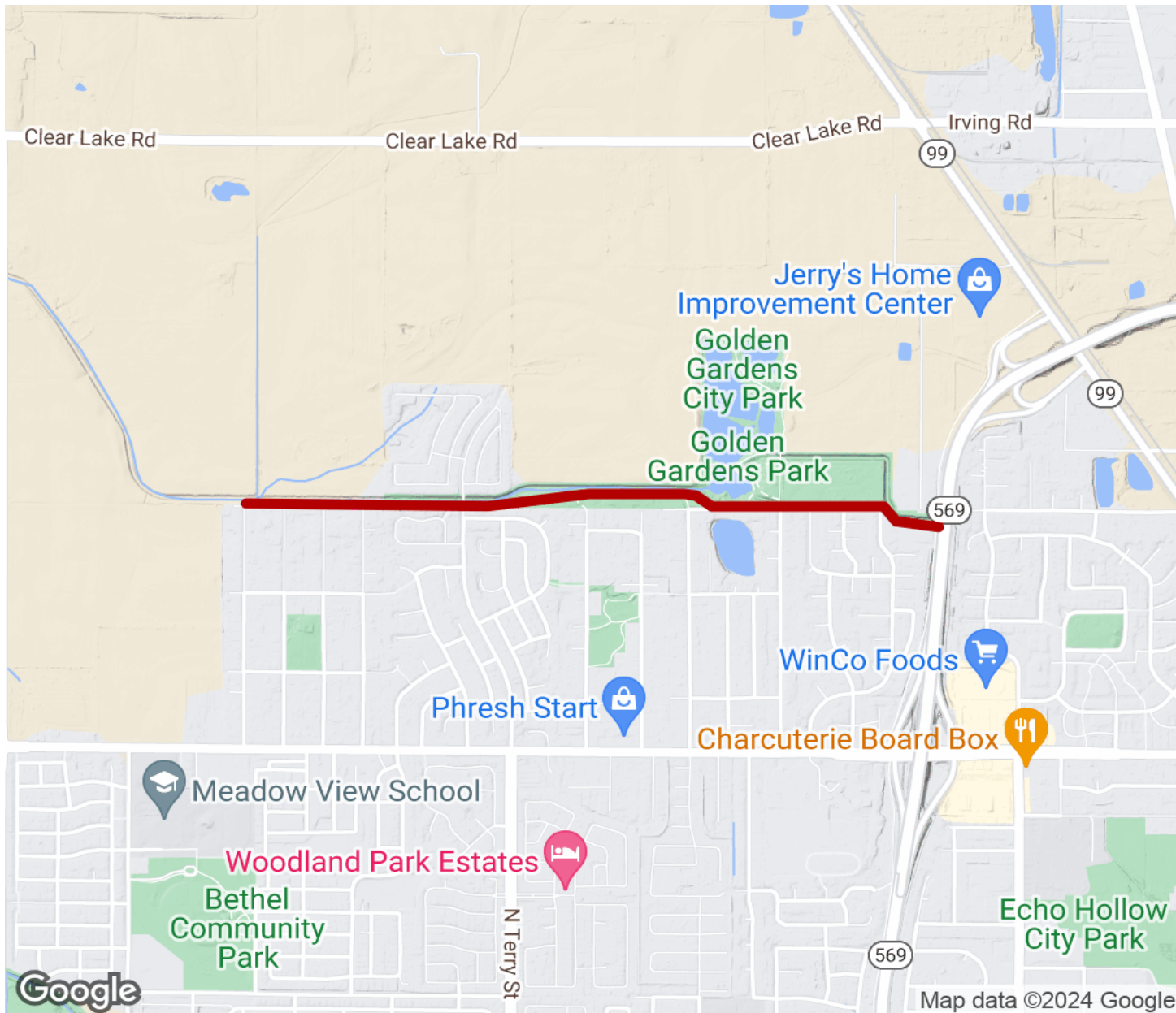
## Parking & Trail Access

No dedicated trail parking is available; parking may be available on nearby streets, but be sure to follow any posted parking signs and regulations.



# Jessen Path

Oregon



Trailhead



Restroom



Parking



Water Fountain



Tunnel



**TrailLink**  
by Rails-to-Trails Conservancy

**TrailLink.com**