



2026

TrailLink Unlimited



Guides



**Northwood
Trail**
Missouri



Northwood Trail

Missouri

Running parallel to Northwood Road is a 10-foot asphalt hike and bike path. The trail travels between residential developments on



Running parallel to Northwood Road is a 10-foot asphalt hike and bike path. The trail travels between residential developments on the northwest side of Riverside, Missouri, well-placed for an easy stroll or bike ride. The trail slopes upwards from River Park Drive to the 52nd Street roundabout.

The trail does not connect to any other trails in Riverside's trail system, which includes the [Missouri Riverfront Trail](#) and the [Line Creek Trail](#) to Kansas City.



Northwood Trail

Missouri

States: Missouri

Counties: Platte

Length: 1miles

Trail end points: 52nd Street to NW River Park
Drive

Trail surfaces: Asphalt

Trail category: Greenway/Non-RT

Trail activities: Bike, Inline

Skating, Walking, Wheelchair Accessible

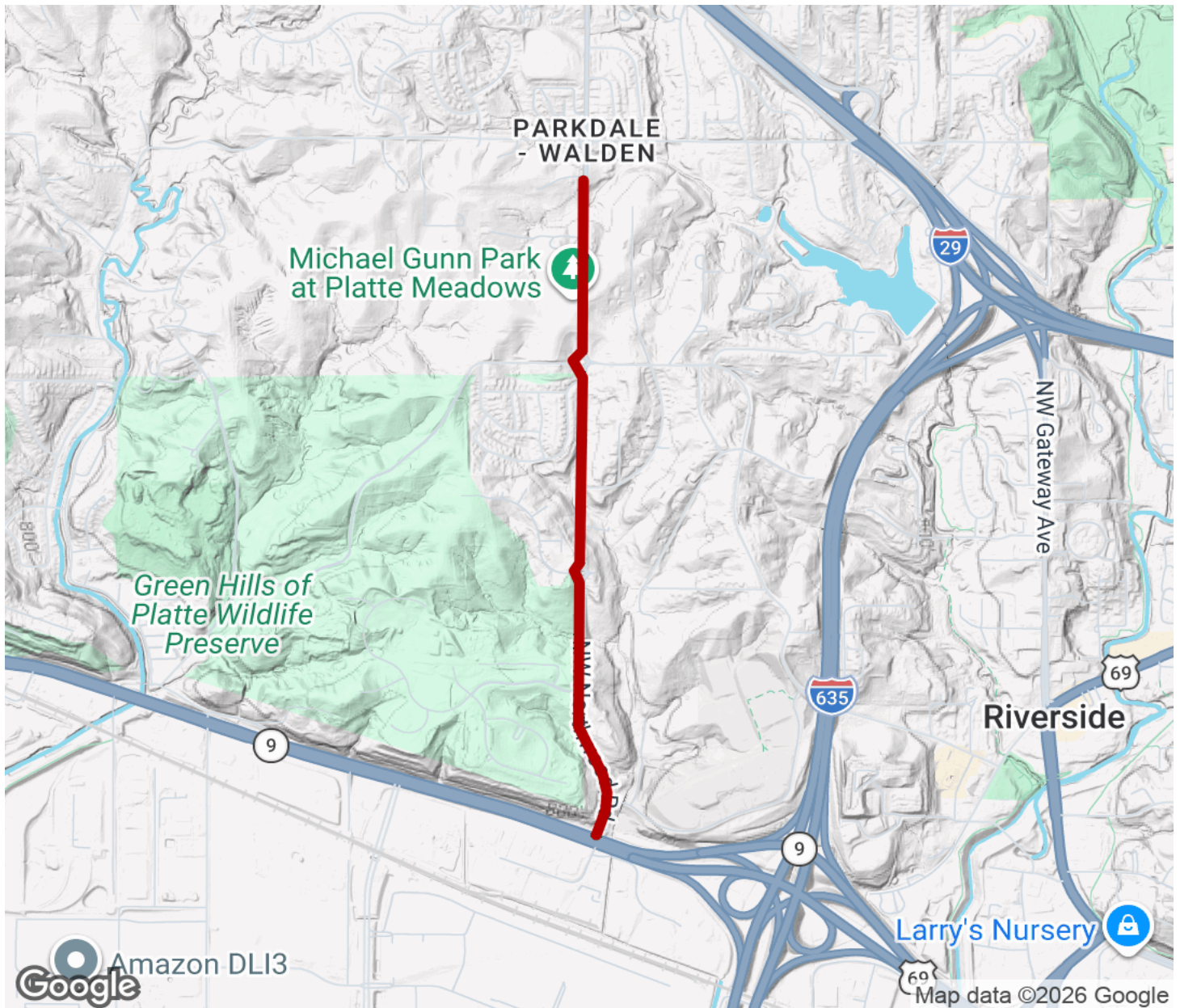
Parking & Trail Access

There is no designated parking for this trail.



Northwood Trail

Missouri



Trailhead



Restroom



Parking



Water Fountain



Tunnel



TrailLink
by Rails-to-Trails Conservancy

TrailLink.com