



2025

TrailLink Unlimited 

Guides



**Jumping  
Branch Trail**  
*Missouri*



## Jumping Branch Trail

Missouri

*Running half a mile along the creek of the same name, the Jumping Branch Trail is a multipurpose recreational trail in the heart of*



Running half a mile along the creek of the same name, the Jumping Branch Trail is a multipurpose recreational trail in the heart of Riverside, Missouri. The trail allows residents in the neighborhoods around 50th Street to connect to the [Line Creek Trail](#) on foot or by bike. The two trails meet at the trailhead in Renner Brenner Park. The Line Creek Trail continues north through Kansas City for a total of 8 miles.



**TrailLink**  
by Rails-to-Trails Conservancy

**TrailLink.com**



# Jumping Branch Trail

Missouri

**States:** Missouri

**Counties:** Platte

Length: 0.5miles

**Trail end points:** 50th Street to Renner  
Brenner Trail

**Trail surfaces:** Concrete

**Trail category:** Greenway/Non-RT

**Trail activities:** Bike, Walking

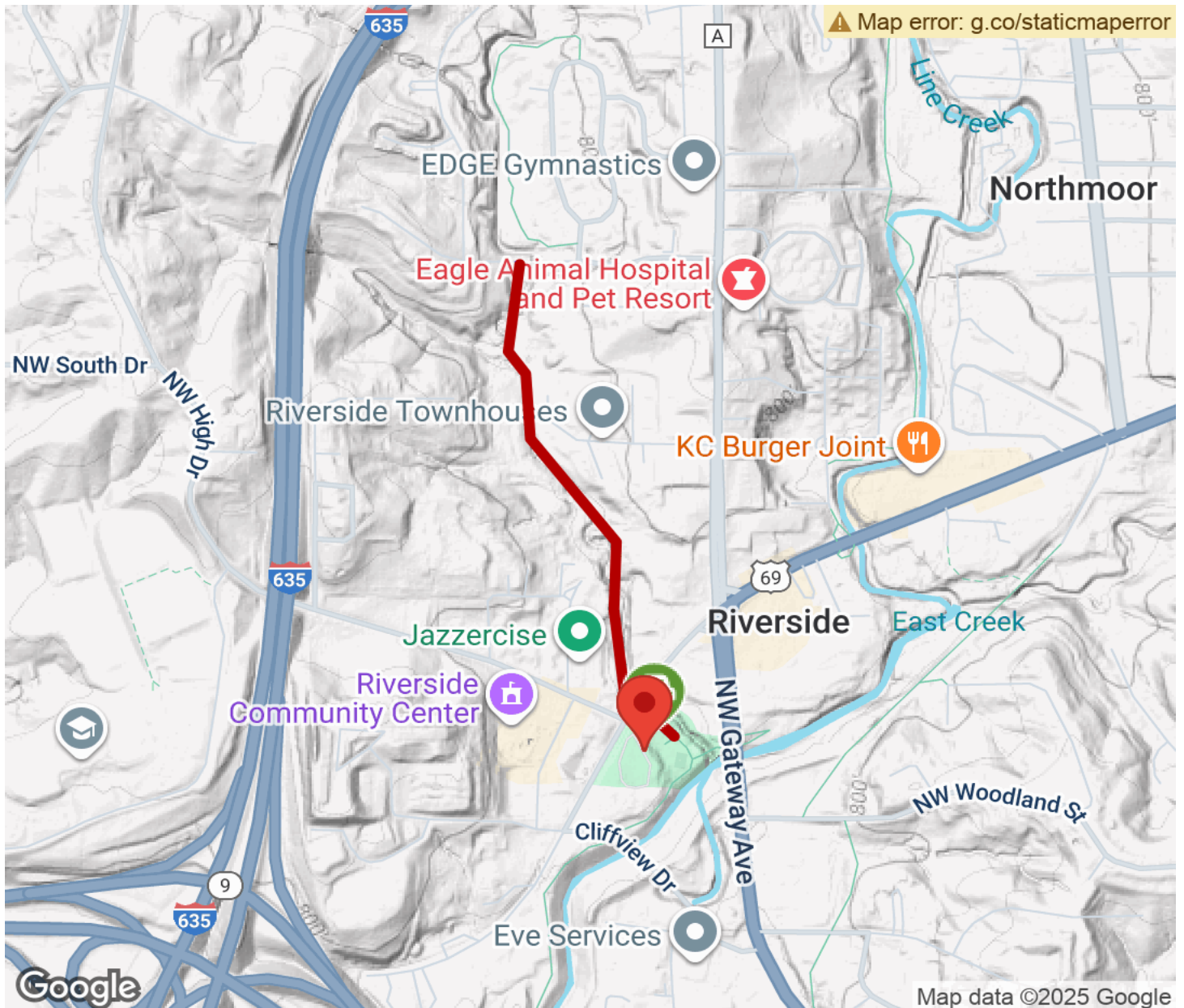
## Parking & Trail Access

Parking is available at Renner Brenner Park (2901 NW Vivion Rd.)



# Jumping Branch Trail

Missouri



Trailhead



Restroom



Parking



Water Fountain



Tunnel



**TrailLink**  
by Rails-to-Trails Conservancy

**TrailLink.com**