



2026

TrailLink Unlimited 

Guides



**Park Avenue
NW Trail**
Minnesota



Park Avenue NW Trail

Minnesota

Faribault is a city about half an hour south of Minneapolis-St. Paul, and the eastern endpoint of one of Minnesota's 40-mile Sakatah



Faribault is a city about half an hour south of Minneapolis-St. Paul, and the eastern endpoint of one of Minnesota's 40-mile [Sakatah Singing Hills State Trail](#). In addition to the regional trails, the city also hosts a growing network of local trails, particularly north of the Cannon River reservoir. The multi-use trail along Park Avenue NW is one of these. The asphalt path begins on Park Avenue and Lyndale Road at the north end of Faribault's segment of the [Mill Towns State Trail](#), and heads north. It starts as a sidepath along Park Avenue and heads north, terminating at the Faribault Energy Park, where visitors are welcome to tour the power plant, or wander around the 35-acres of wetlands surrounding it.



TrailLink
by Rails-to-Trails Conservancy

TrailLink.com



Park Avenue NW Trail

Minnesota

States: Minnesota

Counties: Rice

Length: 1.5miles

Trail end points: Faribault Energy Park to Park Avenue

Trail surfaces: Asphalt

Trail category: Greenway/Non-RT

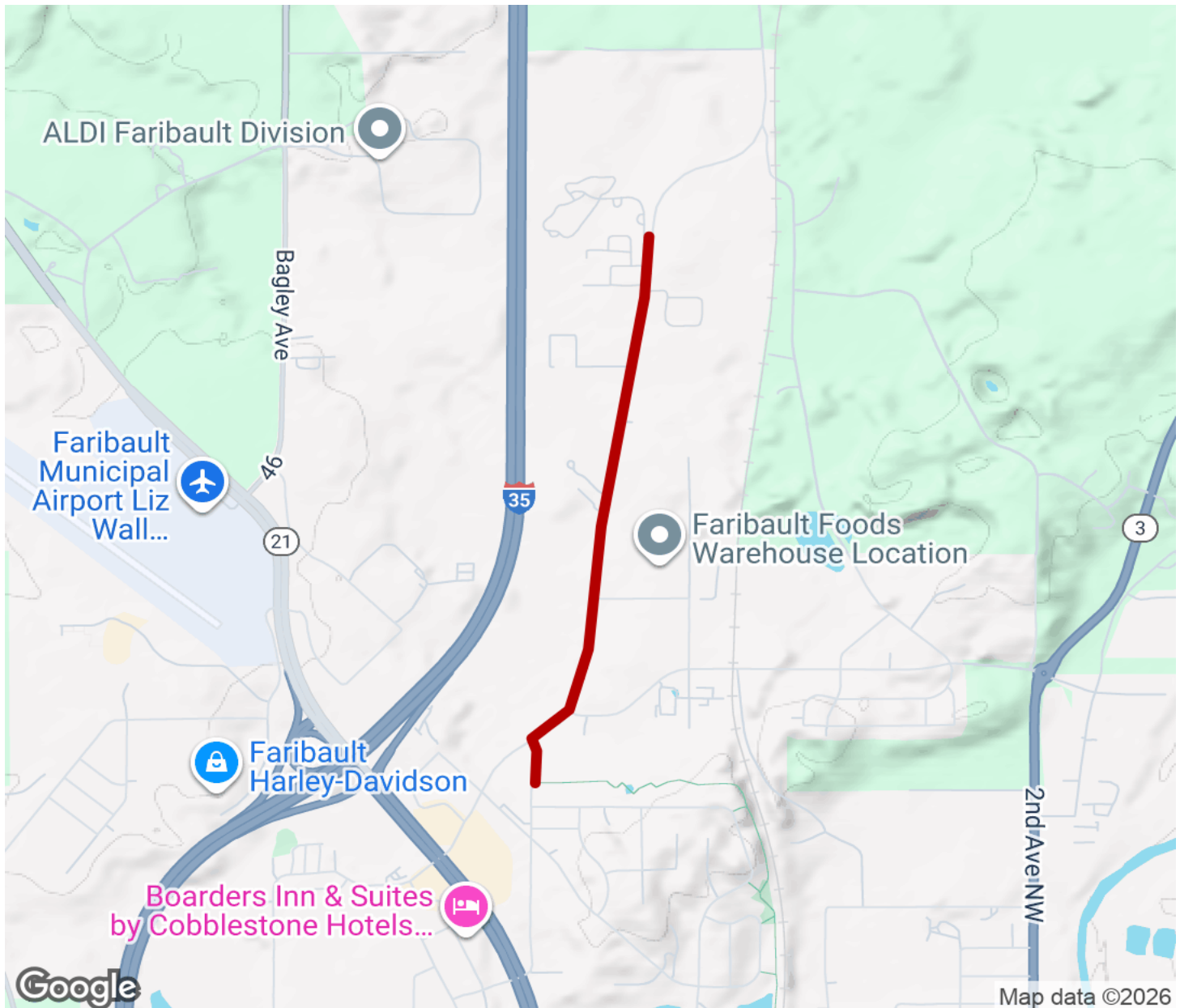
Trail activities: Bike, Walking, Wheelchair Accessible

Parking & Trail Access



Park Avenue NW Trail

Minnesota



Trailhead



Restroom



Parking



Water Fountain



Tunnel



TrailLink
by Rails-to-Trails Conservancy

TrailLink.com