



2025

TrailLink Unlimited 

Guides



**Gulf Terrace
Hike and Bike
Trail**
Texas



Gulf Terrace Hike and Bike Trail

Texas

Gulf Terrace Hike and Bike Trail was Beaumont's first non-motorized multipurpose trail. The trail sits on the levee of a



A second bike-ped trail was constructed not far from this one, also sited on a drainage facility. The [Folsom Hike and Bike Trail](#) is 1.4 miles from point to point.

Gulf Terrace Hike and Bike Trail was Beaumont's first non-motorized multipurpose trail. The trail sits on the levee of a detention pond, ringing around the edge of the facility. The official trailhead is on Phelan Boulevard and signage at the entrance of the trail directs users around the square loop, which is two miles long, or the full 3.5 mile route, which includes branching north past the soccer fields on Dishman Road and back. The trail features long, fairly straight stretches, broken up by the turns of the loop. A carpet of green grass and wildflowers is the main scenery to be found. The trail is popular with residents for exercise, including running and bike riding. Dogs are allowed but must remain leashed. The trail is paved and flat, so it's main challenge is the lack of shade to protect users from the Texas sun. There are, however, shaded benches located off the trail.



Gulf Terrace Hike and Bike Trail

Texas

States: Texas

Counties: Jefferson

Length: 3.5miles

Trail end points: Phelan Boulevard to Dishman Road

Trail surfaces: Concrete

Trail category: Greenway/Non-RT

Trail activities: Bike,Inline

Skating,Wheelchair Accessible,Walking

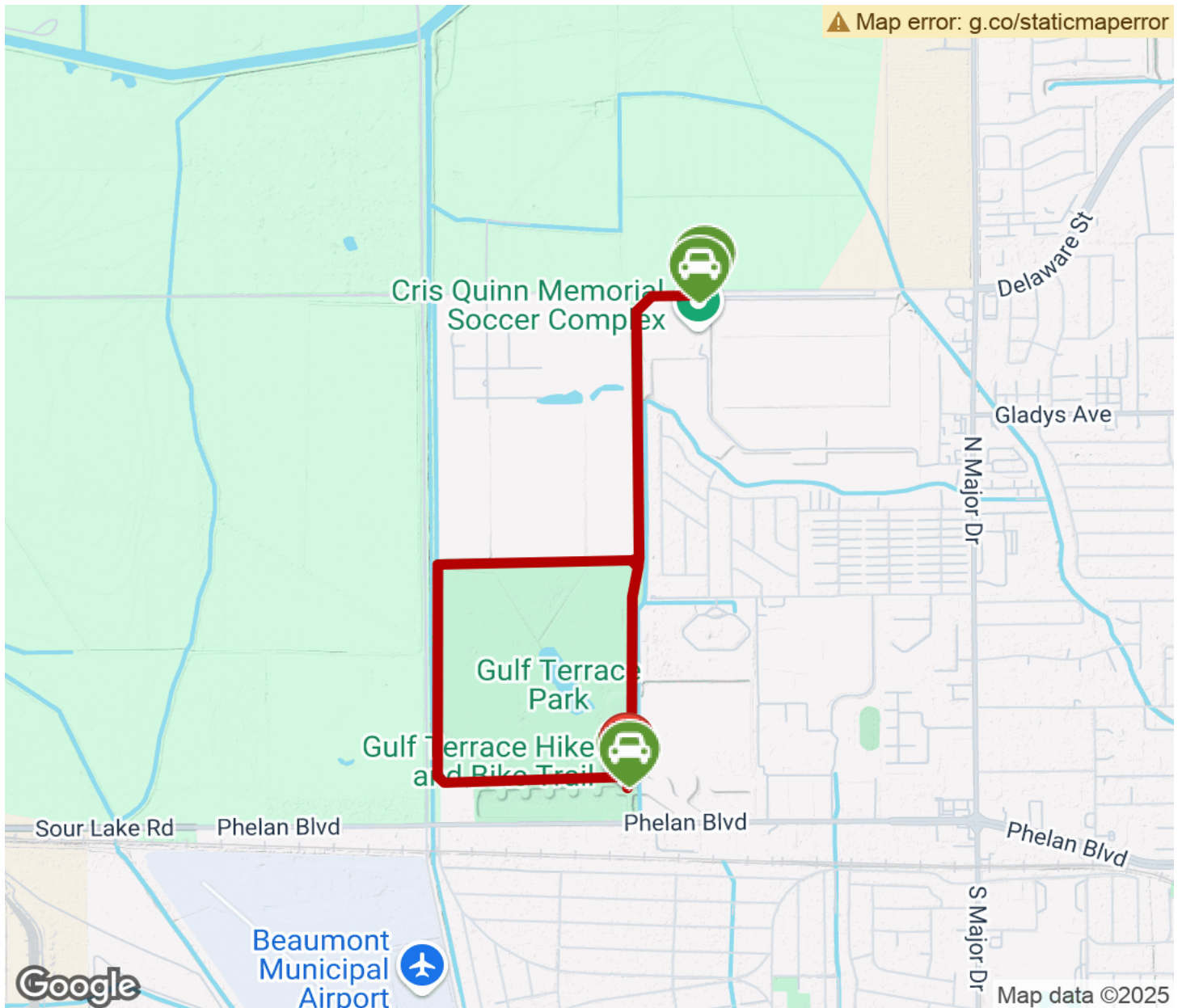
Parking & Trail Access

There is one trailhead on 9310 Phelan Boulevard, with a small parking lot. Another option is to park at the entrance to the soccer complex at the north end of the trail at 9001 Dishman Rd, Beaumont, TX which has more room to park.



Gulf Terrace Hike and Bike Trail

Texas



Trailhead



Restroom



Parking



Water Fountain



Tunnel



TrailLink
by Rails-to-Trails Conservancy

TrailLink.com