



2026

TrailLink Unlimited



Guides



# Pony Express Parkway Trail

*Utah*



## Pony Express Parkway Trail

Utah

*Running the length of its namesake parkway, this paved trail extends from the planned community of Eagle Mountain into*



signage narrates the story of the Pony Express Trail, illustrates the area's physical geography and highlights local Native American culture.

Running the length of its namesake parkway, this paved trail extends from the planned community of Eagle Mountain into Saratoga Springs in Utah County. Eagle Mountain, though relatively recently founded, lies in the path of the original Pony Express Trail, a fact the city commemorates in multiple ways, including this trail and an annual celebration. It's a moderate trail with mild changes in elevation but still enjoyable to run, bike, push a stroller or walk a dog. It's also great way for residents of the rapidly growing subdivisions to get out and explore their natural environment, as well as reach parks or run errands without the need for driving.

One place that invites trail users to stop is the Eagle Mountain Trailhead which provides a vantage point of the Cedar Valley and the mountains beyond it. Interpretive



# Pony Express Parkway Trail

Utah

**States:** Utah

**Counties:** Utah

Length: 9miles

**Trail end points:** Pony Express Pkwy & Eagle Mountain Boulevard to Pony Express Pkwy & SR 68

**Trail surfaces:** Asphalt,Concrete

**Trail category:** Greenway/Non-RT

**Trail activities:** Bike,Mountain

Biking, Walking, Wheelchair Accessible

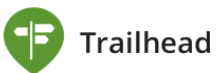
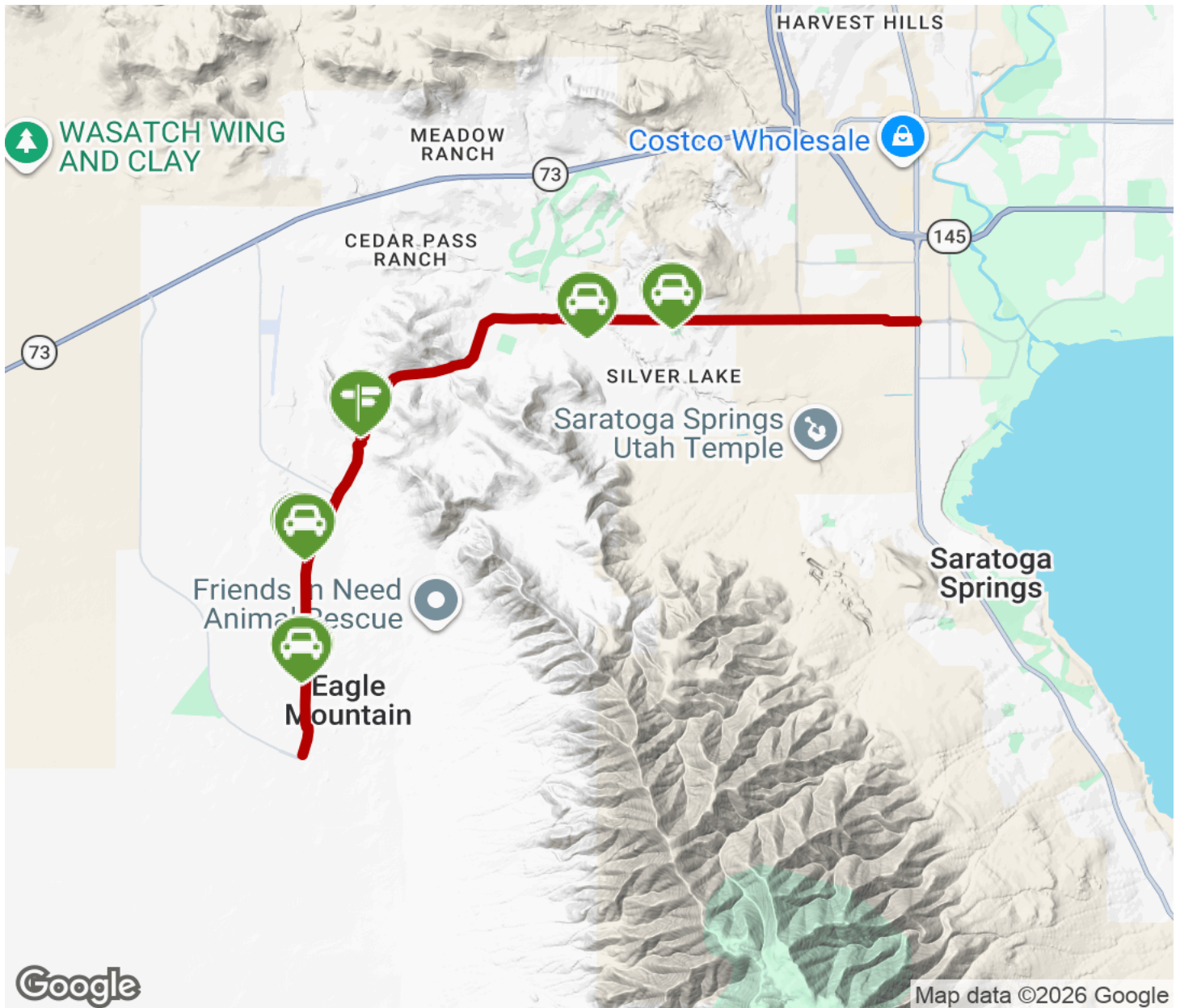
## Parking & Trail Access

There are plenty of parking options along the trail as there are parks and businesses easily accessible from the trail. The Eagle Mountain Trailhead is located off Pony Express Parkway, just south of the LDS church (whose address is 2011 East Oquirrh Ranch Parkway, Eagle Mountain, UT).



# Pony Express Parkway Trail

Utah



Trailhead



Restroom



Parking



Water Fountain



Tunnel



**TrailLink**  
by Rails-to-Trails Conservancy

**TrailLink.com**