



2026

TrailLink Unlimited 

Guides



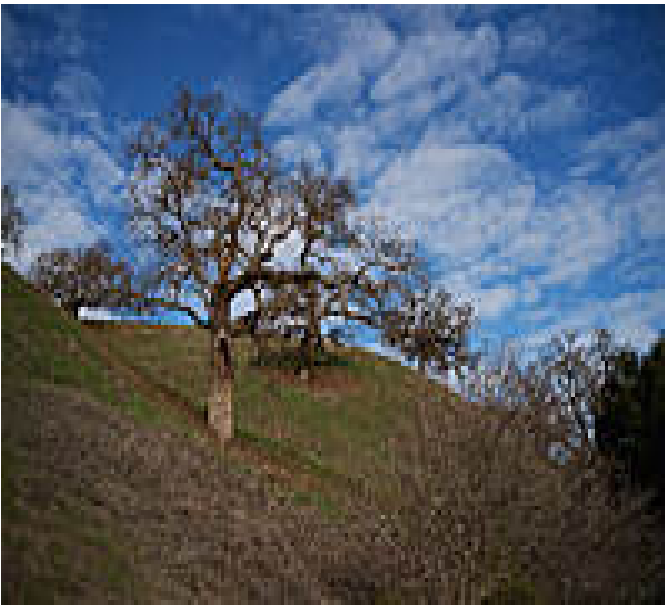
**Alamo Creek
Bike Path
(Dublin)**
California



Alamo Creek Bike Path (Dublin)

California

The Alamo Creek Bike Path snakes alongside its namesake stream through residential Dublin, Alameda County. The paved trail has



The Alamo Creek Bike Path snakes alongside its namesake stream through residential Dublin, Alameda County. The paved trail has spurs reaching into the nearby subdivisions, drawing residents onto the trail. The trail connects to local parks including Alamo Creek Park on Willow Road and Dougherty Hills Park on Amador Valley Boulevard. At the trail's south end, it meets the [Iron Horse Regional Trail](#), which extends 32 miles through Alameda and Contra Costa counties on a converted railbed. Just south of that connection is another trail, the [Alamo Canal Trail](#), a short bike-ped path that provides access to Dublin's civic center and library, and features an underpass under Interstate 580, allowing a seamless connection to Pleasanton's [Centennial Trail](#).



TrailLink
by Rails-to-Trails Conservancy

TrailLink.com



Alamo Creek Bike Path (Dublin)

California

States: California

Counties: Alameda

Length: 1.8miles

Trail end points: Iron Horse Regional Trail to
Beaver Creek Street

Trail surfaces: Asphalt

Trail category: Greenway/Non-RT

Trail activities: Bike,Inline

Skating,Walking,Wheelchair Accessible

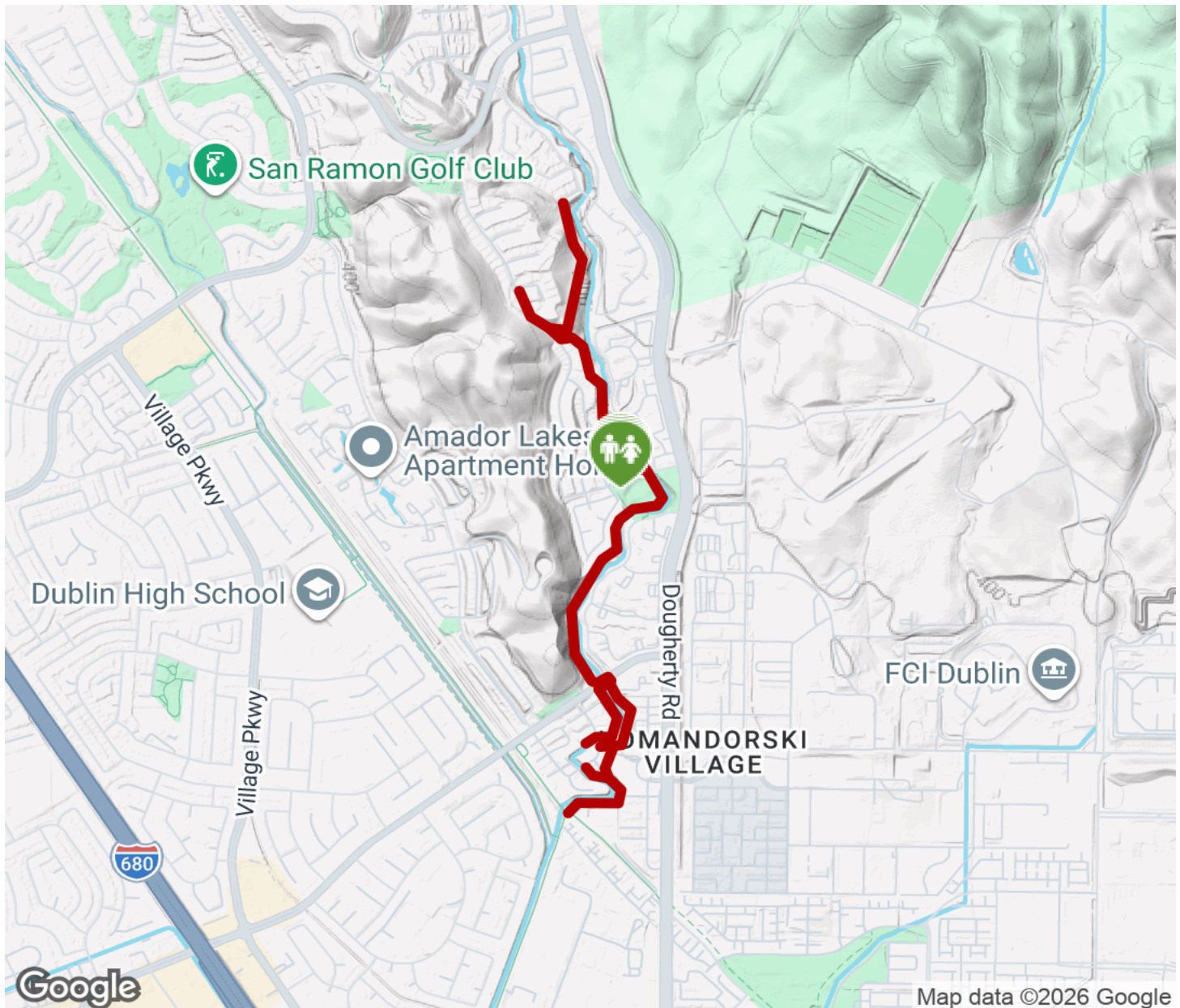
Parking & Trail Access

Parking is available at Alamo Creek Park (7601 Shady Creek Rd, Dublin). There are also restrooms at this location.



Alamo Creek Bike Path (Dublin)

California



Trailhead



Restroom



Parking



Water Fountain



Tunnel



TrailLink
by Rails-to-Trails Conservancy

TrailLink.com