



2025

TrailLink Unlimited 

Guides   



LAFF Pathway
Michigan



LAFF Pathway

Michigan

The LAFF Pathway is a proposed recreational trail project connecting the communities of Linden, Argentine Township,



The LAFF Pathway is a proposed recreational trail project connecting the communities of Linden, Argentine Township, Fenton, and Fenton Township in Genesee County.

The first phase of the LAFF Pathway, opened in October 2020, consists of a paved, 10-foot wide multipurpose trail linking Argentine Township to Linden. The trail begins on Lobdell Road and heads north, before crossing into and cutting through the Linden Schools campus. Past the schools, the trail begins to follow Silver Lake Road into the City of Linden, passing through rural and suburban areas. From Chestnut Way, users can continue on the city's sidewalks to Linden County Park on Linden Road, and continue on to Fenton. The trail is generally flat making it friendly for walking, running, biking, and skating.



TrailLink
by Rails-to-Trails Conservancy

TrailLink.com



LAFF Pathway

Michigan

States: Michigan

Counties: Genesee

Length: 2miles

Trail end points: Lobdell Road at Haviland
Beach Drive (Argentine Twp) to Chestnut Way
(Linden)

Trail surfaces: Asphalt

Trail category: Greenway/Non-RT

Trail activities: Bike,Inline
Skating,Wheelchair Accessible

Parking & Trail Access

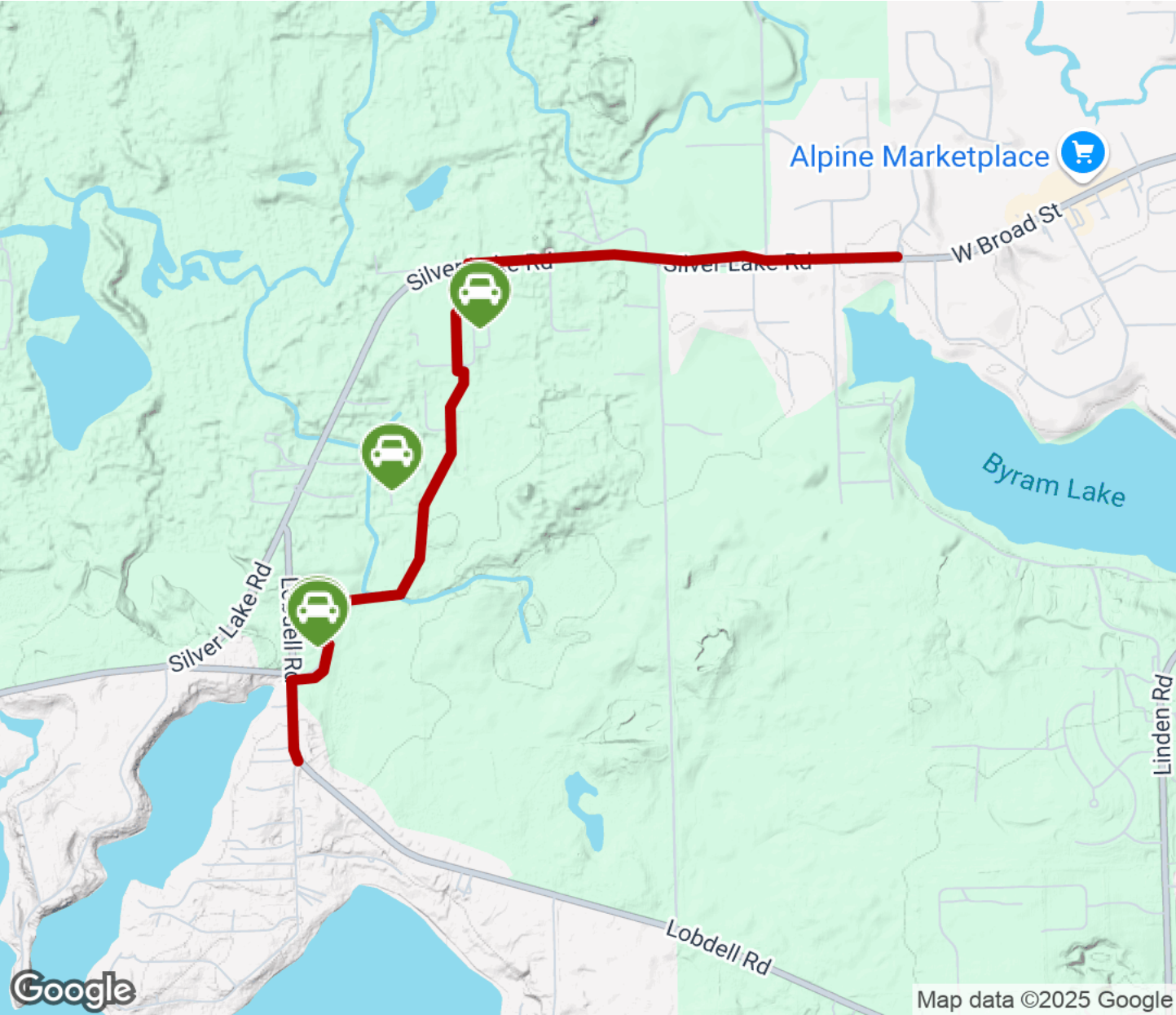
From US-23, head west on Silver Lake Road and Park at Linden High School (7201 Silver Lake Rd, Linden). There is a parking area for trail users at the south end of the Linden Schools campus, beside the trail near Lobdell Road.

Users can also park in the City of Linden (at the strip mall on Silver Lake Road - across from the intersection of Hyatt Lane and Silver Lake Road) and take sidewalks or a bike lane west to connect with the trail.



LAFF Pathway

Michigan



- Trailhead
- Restroom
- Parking
- Water Fountain
- Tunnel