



2026

TrailLink Unlimited 

Guides



# Bayview Trail

*Washington*



## Bayview Trail

Washington

*The Bayview Trail is a recreational path located near the top of Whiskey Ridge. The trail occupies the utility corridor, weaving*



beautiful wooded area.

Note that this trail has a number of street crossings at marked crosswalks.

The Bayview Trail is a recreational path located near the top of Whiskey Ridge. The trail occupies the utility corridor, weaving under power lines and undulating as it crosses from 84th Street down to 64th street. Located close to Getchel Hill and Whiskey Ridge neighborhoods, the trail is a place where neighbors can walk, ride, skate and meet. In some spots, like around 77th Street, the trail lives up to its name and Port Gardner Bay is visible beyond the rooftops and treetops. Benches are provided for users to pause and take in the vistas.

In 2021, the connection to the [Centennial Trail](#) was completed. From its former endpoint on 84th Street, the Bayview trail heads right and then left, connecting with the Centennial Trail below the State Highway 9 overpass. This new bypass trail is asphalt and winds through a



# Bayview Trail

Washington

**States:** Washington

**Counties:** Snohomish

Length: 2.6miles

**Trail end points:** 64th Street to 84th Street

**Trail surfaces:** Asphalt

**Trail category:** Greenway/Non-RT

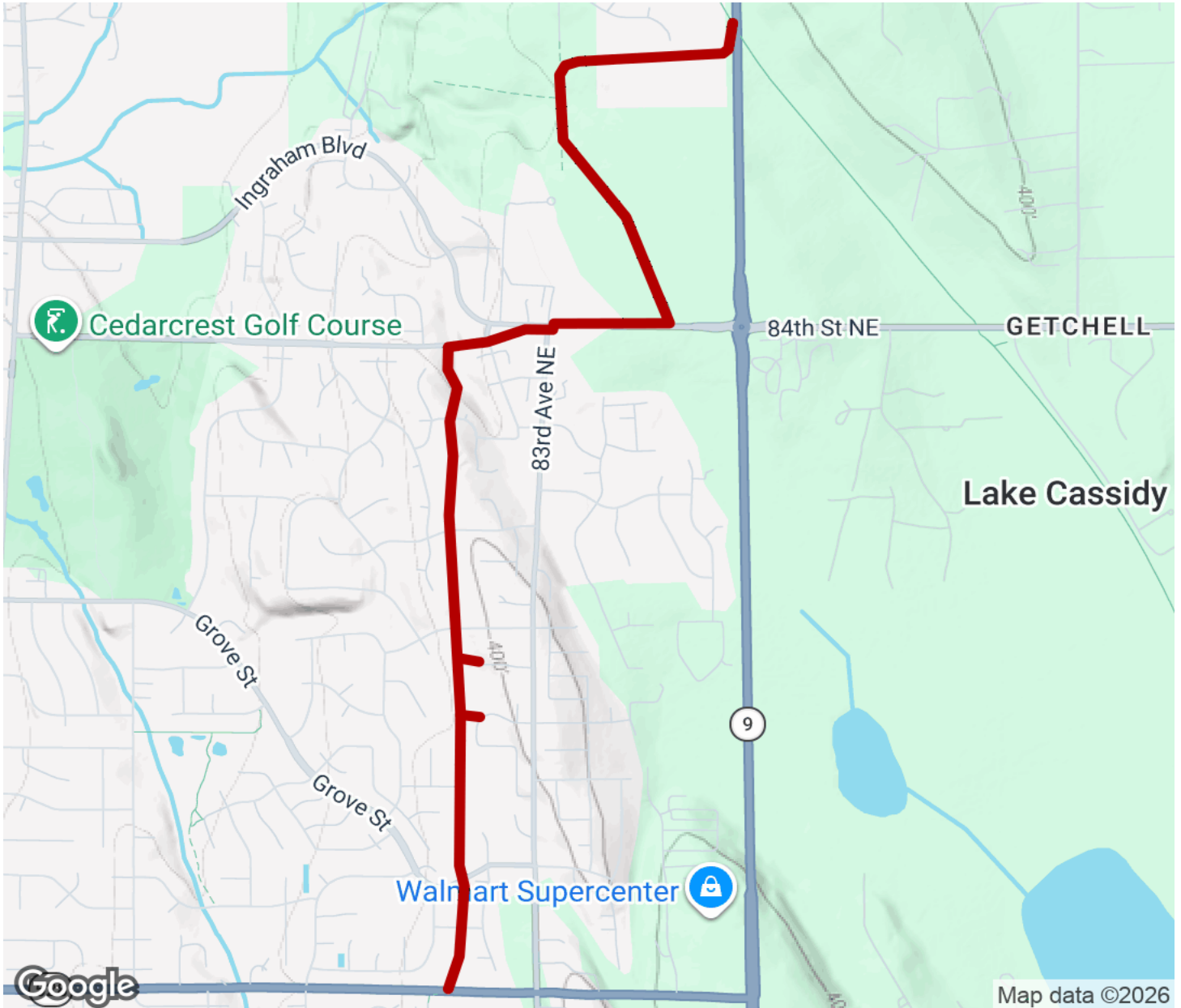
**Trail activities:** Bike, Walking

## Parking & Trail Access



# Bayview Trail

Washington



Trailhead



Restroom



Parking



Water Fountain



Tunnel



**TrailLink**  
by Rails-to-Trails Conservancy

**TrailLink.com**