



2025

TrailLink Unlimited 

Guides



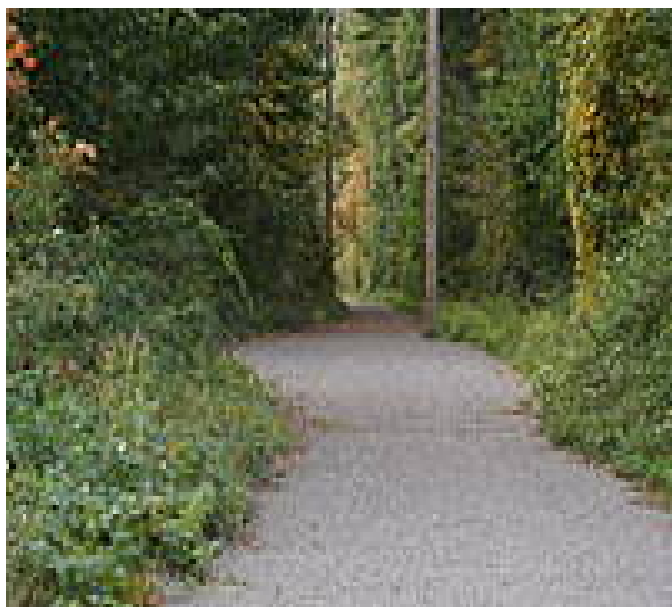
**Middleton  
Rail Trail**  
*Massachusetts*



## Middleton Rail Trail

*Massachusetts*

*The Middleton Rail Trail is a trail along the former Essex Railroad. The trail stretches 4.5 miles from the North Andover border,*



The Middleton Rail Trail is a trail along the former Essex Railroad. The trail stretches 4.5 miles from the North Andover border, through the town, and will eventually join the Danvers Rail Trail.

There is a short gap in the trail along Essex St. Use a sidewalk to bridge the gap. The trail is open for a variety of non-motorized uses throughout the year.

There are several new kiosks, bike racks, bike repair stations, and benches located along the trail. The first of two kiosks has been installed at the entrance off Creedon Lane, near the Howe-Manning School. The second is on Essex Street.



**TrailLink**  
by Rails-to-Trails Conservancy

**TrailLink.com**



# Middleton Rail Trail

*Massachusetts*

**States:** Massachusetts

**Counties:** Essex

Length: 4.5miles

**Trail end points:** Sharpner's Pond Rd. (North Andover) to Maple St. & Hathorne Ave. (Danvers)

**Trail surfaces:** Crushed Stone

**Trail category:** Rail-Trail

**Trail activities:** Bike, Mountain Biking, Walking, Wheelchair Accessible, Cross Country Skiing

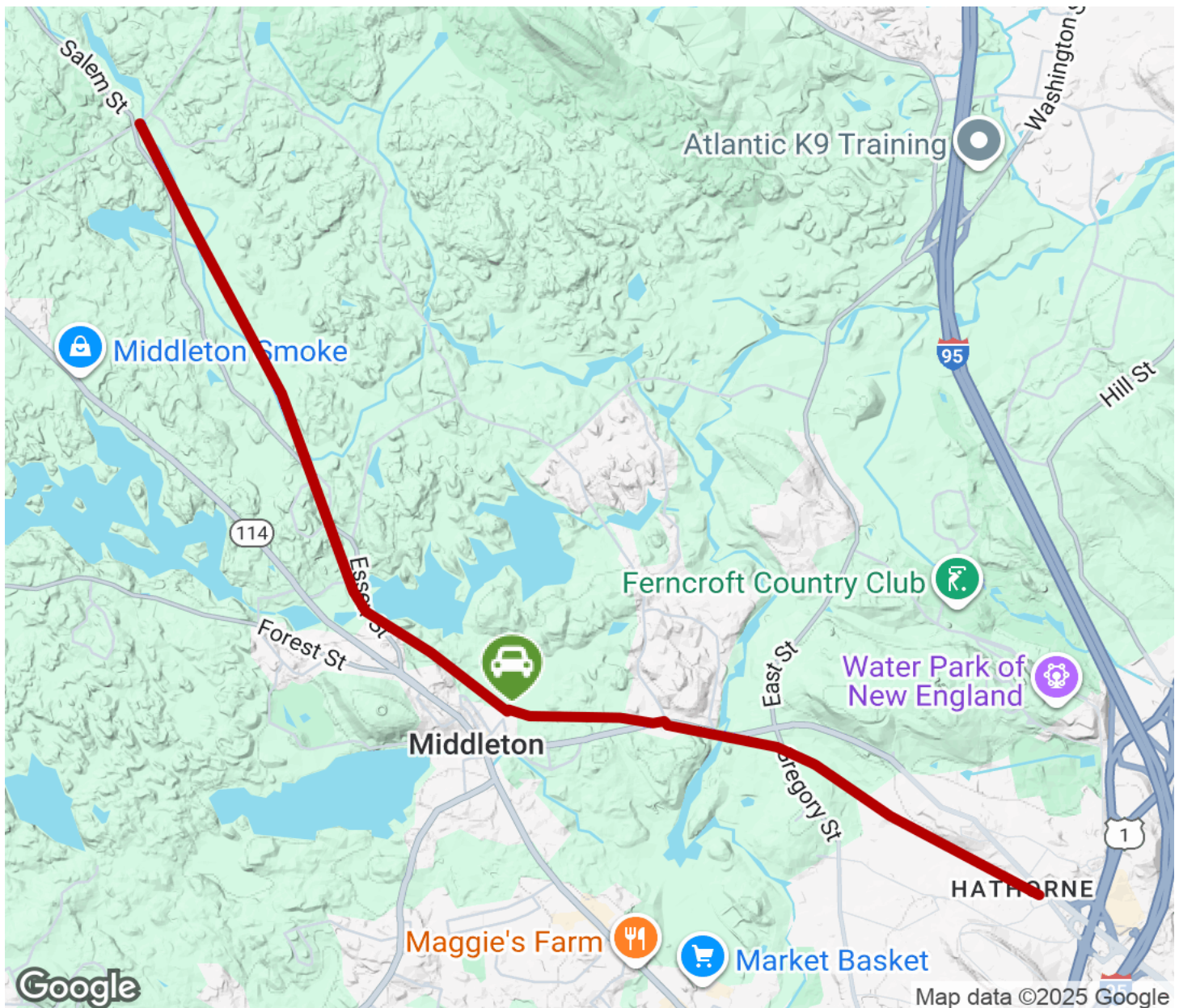
## Parking & Trail Access

There is no assigned parking but on the weekends there is a parking lot at the end of Central Street used for Howe-Manning Elementary teacher parking during the week.



# Middleton Rail Trail

Massachusetts



Trailhead



Restroom



Parking



Water Fountain



Tunnel



**TrailLink**  
by Rails-to-Trails Conservancy

**TrailLink.com**