



2026

TrailLink Unlimited 

Guides



Eastern Star Trail

Minnesota



Eastern Star Trail

Minnesota

Eastern Star Trail is over a half-mile long and is located in a Sauk Rapids subdivision. The non-motorized trail sits between homes,



Eastern Star Trail is over a half-mile long and is located in a Sauk Rapids subdivision. The non-motorized trail sits between homes, allowing neighbors to explore the nearby wetlands as well as access Eastern Star Park on one end, with its playground and picnic tables. Across 18th Street, trail users can continue their walks or rides on the [Prairie Lane Trail](#).



Eastern Star Trail

Minnesota

States: Minnesota

Counties: Benton

Length: 0.6miles

Trail end points: 18th St. N. to 6th St. N.

Trail surfaces: Asphalt

Trail category: Greenway/Non-RT

Trail activities: Bike,Inline Skating,Walking

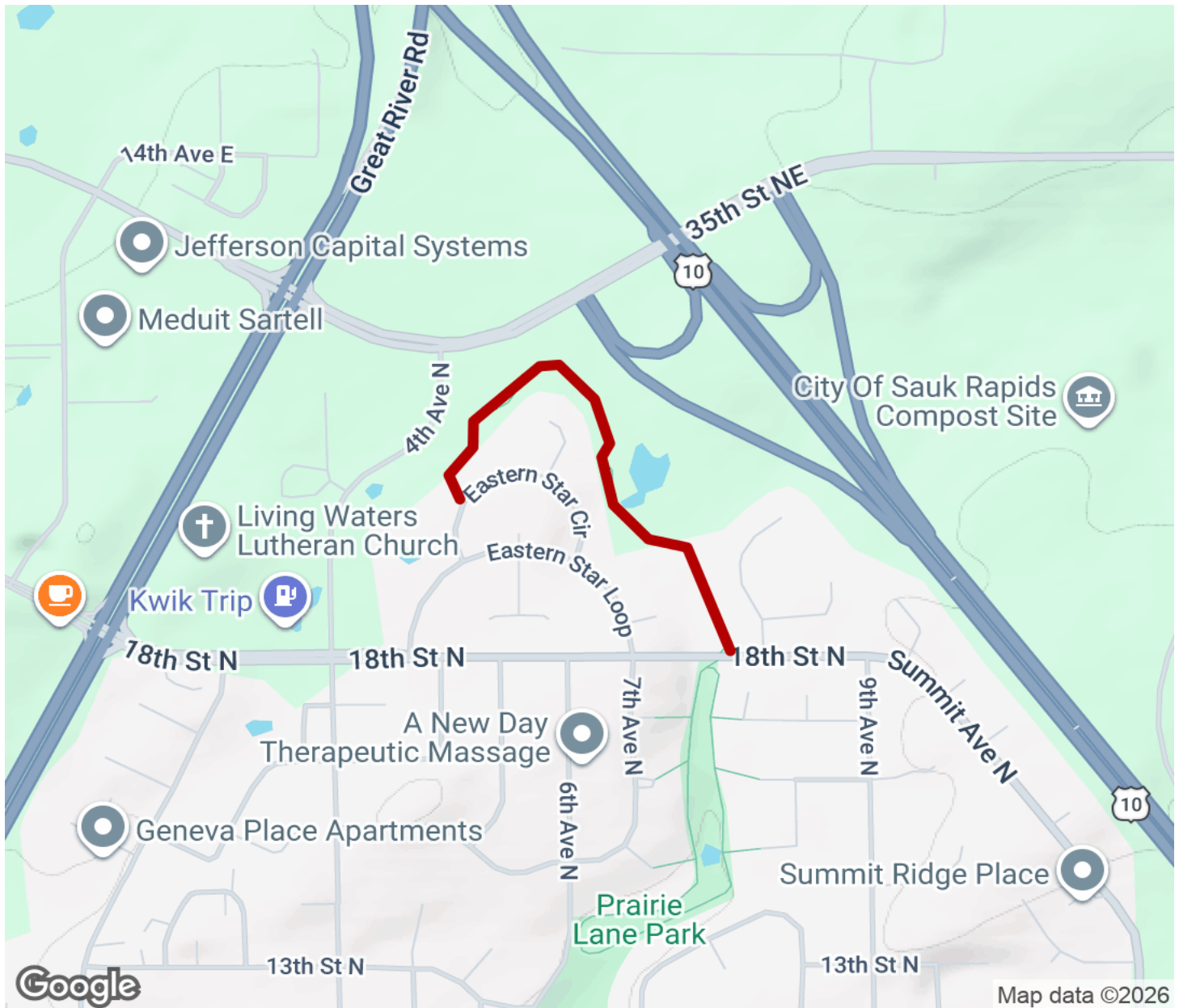
Parking & Trail Access

There is no dedicated parking for this trail.



Eastern Star Trail

Minnesota



Trailhead



Restroom



Parking



Water Fountain



Tunnel



TrailLink
by Rails-to-Trails Conservancy

TrailLink.com