



2025

TrailLink Unlimited 

Guides



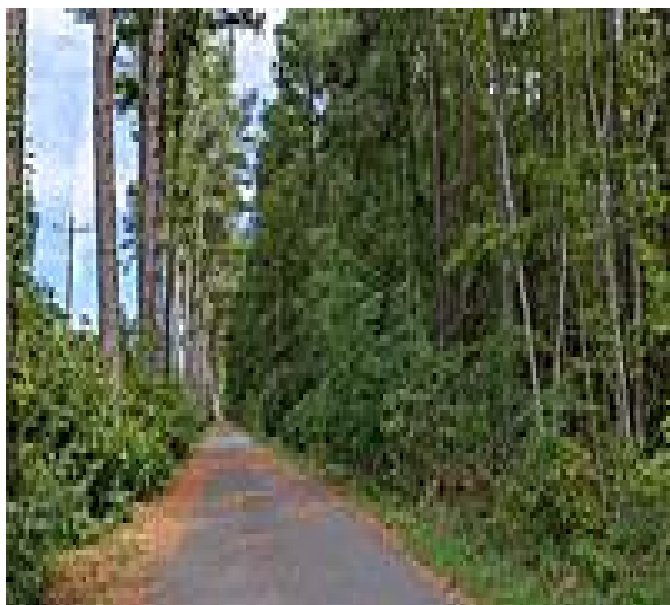
**413 Rail to
Trail**
Maryland



413 Rail to Trail

Maryland

The 413 Rail to Trail is located in Somerset County, Maryland. The trail will be 12 miles point-to-point when complete. The trail



The 413 Rail to Trail is located in Somerset County, Maryland. The trail will be 12 miles point-to-point when complete. The trail parallels State Route 413, which lends it its name, and is built in the former railbed of a railroad that went bankrupt in the mid-70s. At present, the first phase is paved and open for use between Crisfield and Marion. The trail is flat, shaded in some parts and exposed in others, so keep that in mind when visiting in the hotter months. Benches on the path provide respite for tired trail users.

Phase 2 will continue the trail northeast to Westover to complete the trail.



TrailLink
by Rails-to-Trails Conservancy

TrailLink.com



413 Rail to Trail

Maryland

States: Maryland

Counties: Somerset

Length: 4.5miles

Trail end points: Hinman Lane (Crisfield) to
Davis Road (Marion)

Trail surfaces: Asphalt, Crushed Stone

Trail category: Rail-Trail

Trail activities: Bike, Wheelchair

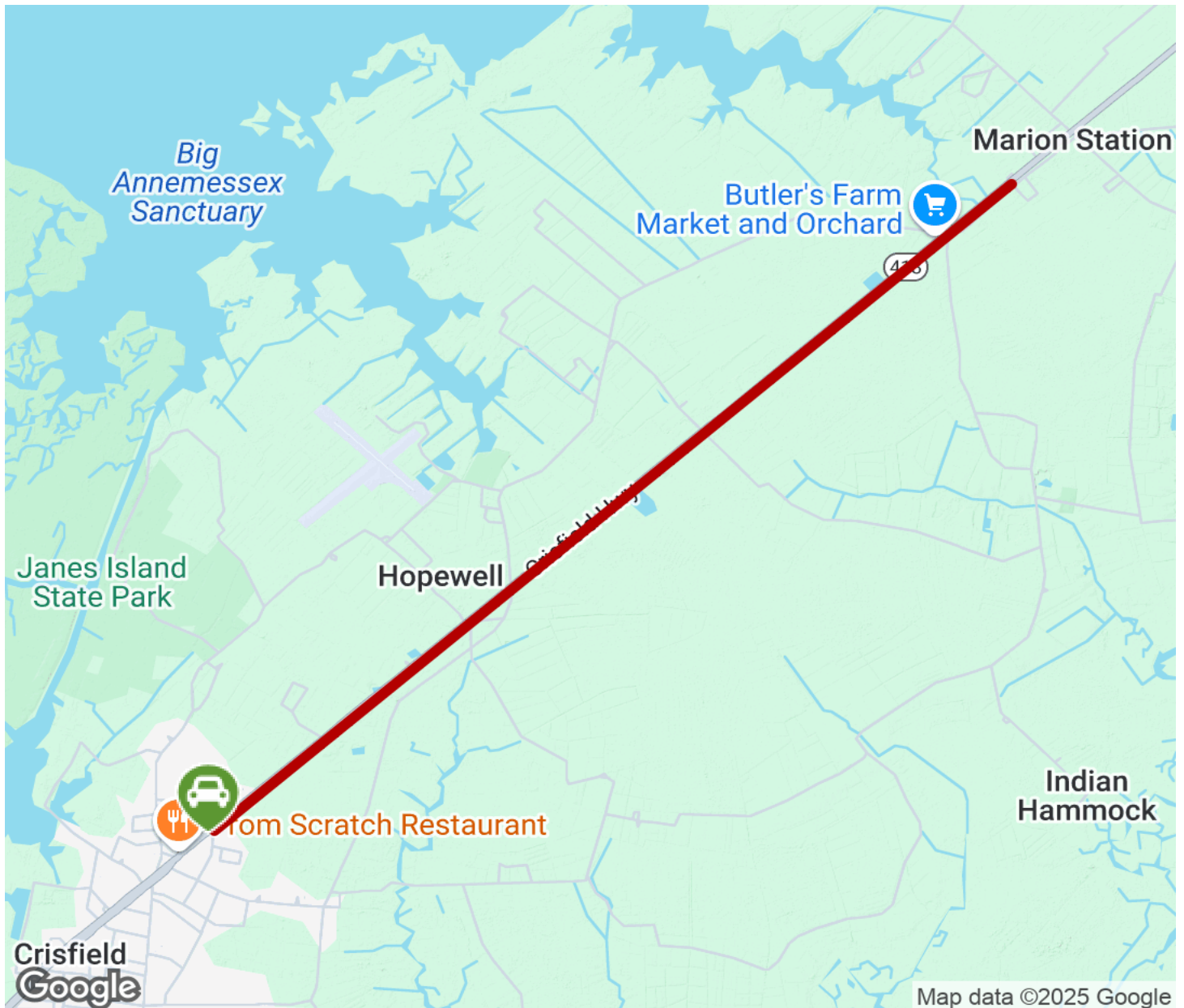
Accessible, Walking

Parking & Trail Access



413 Rail to Trail

Maryland



Trailhead



Restroom



Parking



Water Fountain



Tunnel



TrailLink
by Rails-to-Trails Conservancy

TrailLink.com