



2026

TrailLink Unlimited



Guides



**Sandyvale
Trail**
Pennsylvania



Sandyvale Trail

Pennsylvania

The Sandyvale Trail is a multi-use trail in the Sandyvale Memorial Gardens, a park and pioneer cemetery in Johnstown, PA. The are



The Sandyvale Trail is a multi-use trail in the Sandyvale Memorial Gardens, a park and pioneer cemetery in Johnstown, PA. There are two parallel branches: One runs through the middle of the park, passing the park's greenhouse, veterans' memorial and dog park and before dead-ending. The other is located on the east side and cuts straight through the grassy grounds to Messenger Street. On the same street, trail goers can continue their trip by crossing the train tracks to the northern trailhead of [Jim Mayer Riverswalk](#).



Sandyvale Trail

Pennsylvania

States: Pennsylvania

Counties: Cambria

Length: 0.6miles

Trail end points: Hickory Street to Messenger Street

Trail surfaces: Asphalt

Trail category: Greenway/Non-RT

Trail activities: Bike, Inline Skating, Walking, Wheelchair Accessible

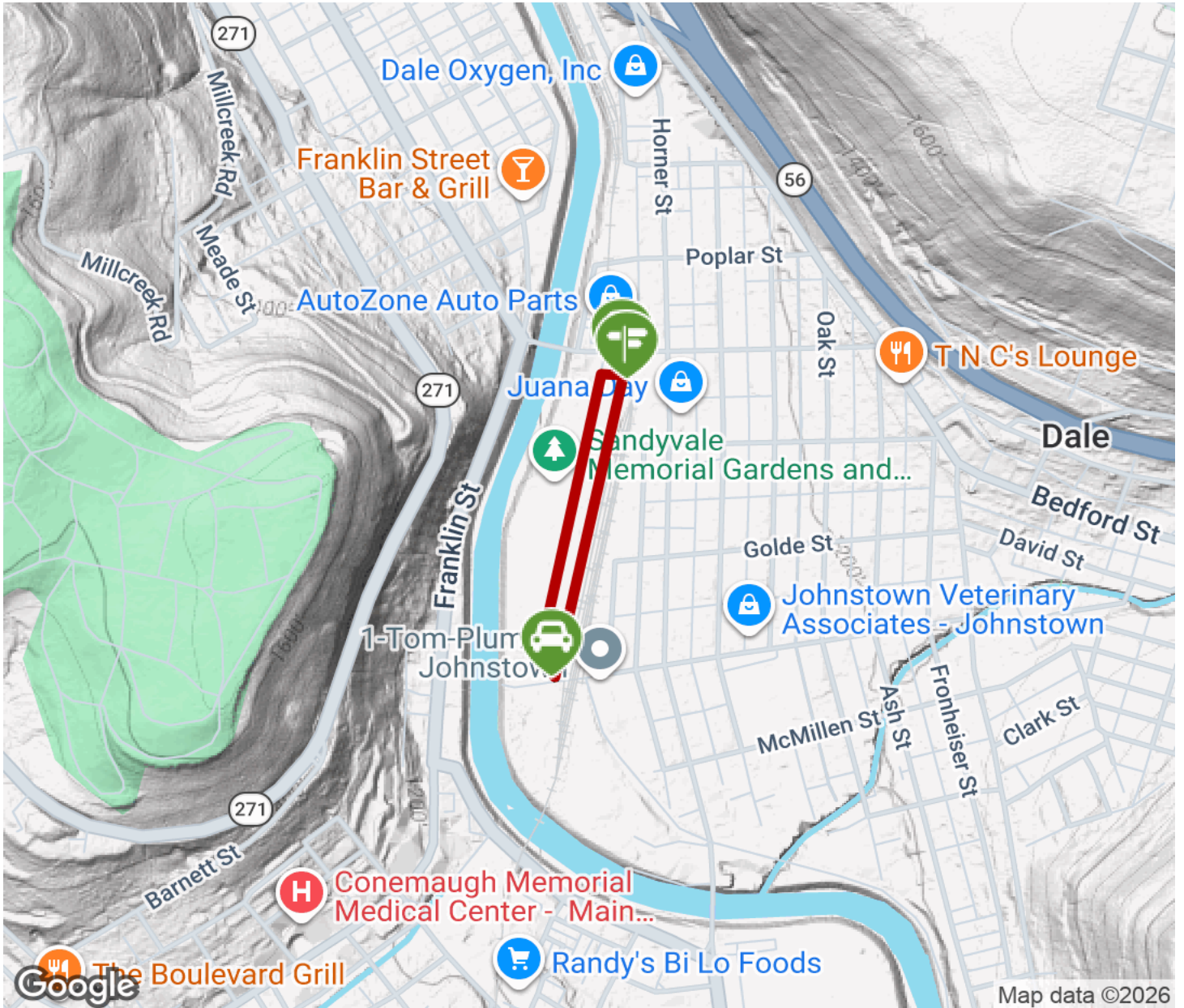
Parking & Trail Access

Park at the Hickory Street Trailhead (80 Hickory Street, Johnstown, PA).



Sandyvale Trail

Pennsylvania



Trailhead



Restroom



Parking



Water Fountain



Tunnel



TrailLink
by Rails-to-Trails Conservancy

TrailLink.com