



2026

TrailLink Unlimited 

Guides



**Raymond
Battlefield
Walking Trail**
Mississippi



Raymond Battlefield Walking Trail

Mississippi

While many visitors flock every year to tour the Vicksburg battlefield site, not as many are aware of the preserved hidden gem



for both military history buffs and those looking for a quiet nature walk.

While many visitors flock every year to tour the Vicksburg battlefield site, not as many are aware of the preserved hidden gem that is the Raymond Military Park, located near Jackson just over twenty miles to the east of Vicksburg. The site commemorates the Battle of Raymond, a key clash during General Grant's Vicksburg campaign, and features a scenic interpretive trail that allows visitors to learn more about the area's history along its shaded, paved path.

The western part of the loop trail lies along the former route of the narrow gauge Little J spur of what became part of the Illinois Central Railroad, a line which played an important role in the area's history during and beyond the Civil War. A series of signage along the trail provides ample information for visitors, making this an ideal stop



Raymond Battlefield Walking Trail

Mississippi

States: Mississippi

Counties: Hinds

Length: 1.2miles

Trail end points: Old Port Gibson Rd. to West of MS-18 (Raymond Military Park)

Trail surfaces: Asphalt

Trail category: Rail-Trail

Trail activities: Walking

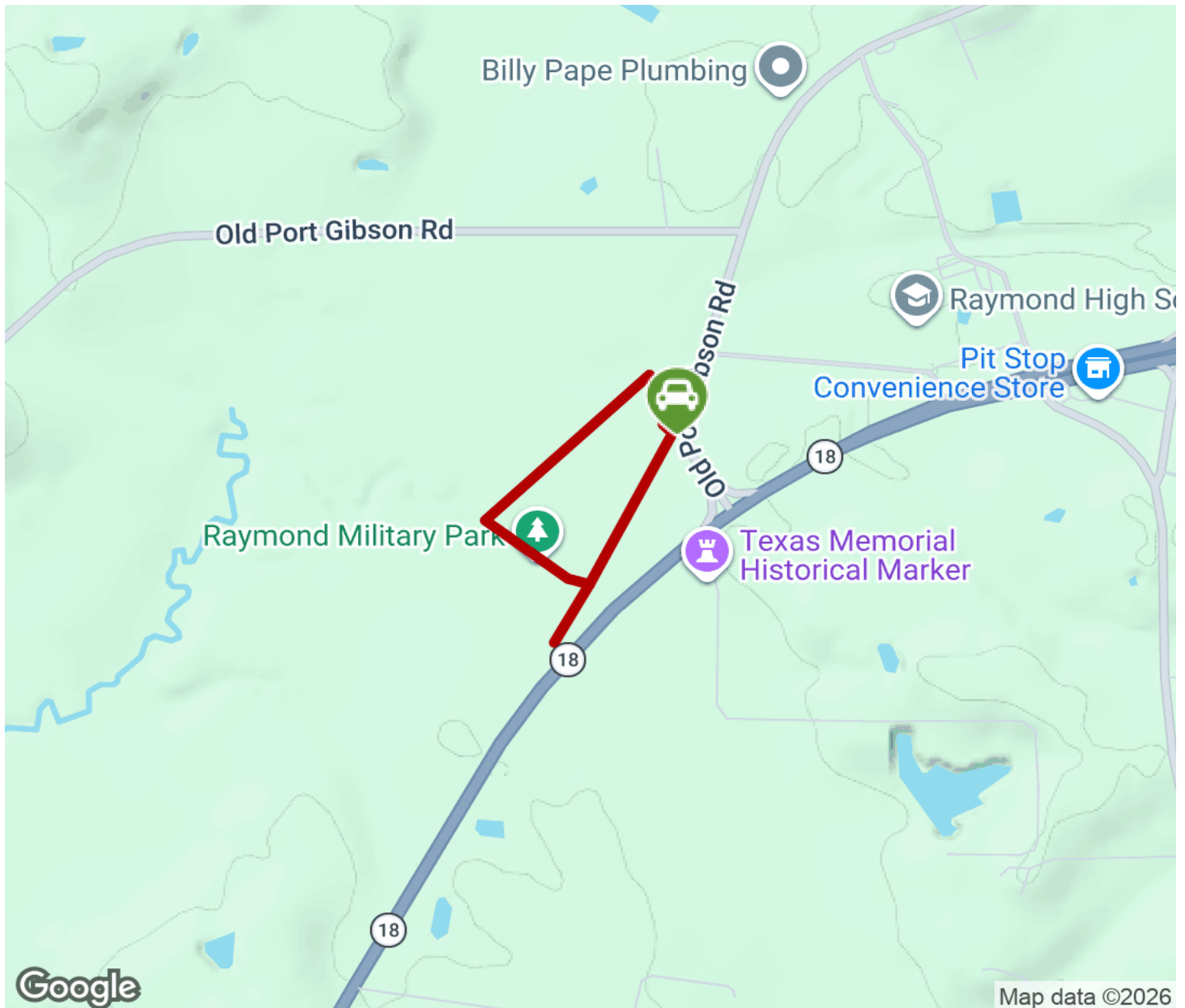
Parking & Trail Access

A small parking lot is available at the northern end of the park, located on Old Port Gibson Road just north of State Route 18, west of the Raymond High School. The Raymond Military Park is located about 8 miles south of Interstate-20 from exit 27.



Raymond Battlefield Walking Trail

Mississippi



Trailhead



Restroom



Parking



Water Fountain



Tunnel



TrailLink
by Rails-to-Trails Conservancy

TrailLink.com