



2025

TrailLink Unlimited



Guides



**Sierra
Gateway Trail**
California



Sierra Gateway Trail

California

The Sierra Gateway Trail is a developing walking and biking path tucked into the northeast corner of Clovis. The paved trail extends a



The Sierra Gateway Trail is a developing walking and biking path tucked into the northeast corner of Clovis. The paved trail extends a mile-and-half along the perimeter of the Harlan Ranch subdivision. The trail borrows its name from its hometown, which is nicknamed the Gateway to the Sierras, thanks to its location at the foot of the Sierra Nevada Mountain Range.

The Sierra Gateway Trail is a standalone trail but there are plans to extend it to the [Enterprise Canal Trail](#), which would in turn connect users to the [Dry Creek Trail](#). Clovis also boasts its own rail-trail, the [Clovis Old Town Trail](#), which is about 6 miles long and extends into neighboring Fresno.



Sierra Gateway Trail

California

States: California

Counties: Fresno

Length: 1.5miles

Trail end points: Shepherd Avenue & N.
Highland Avenue to De Wolf Avenue

Trail surfaces: Asphalt

Trail category: Greenway/Non-RT

Trail activities: Bike, Walking

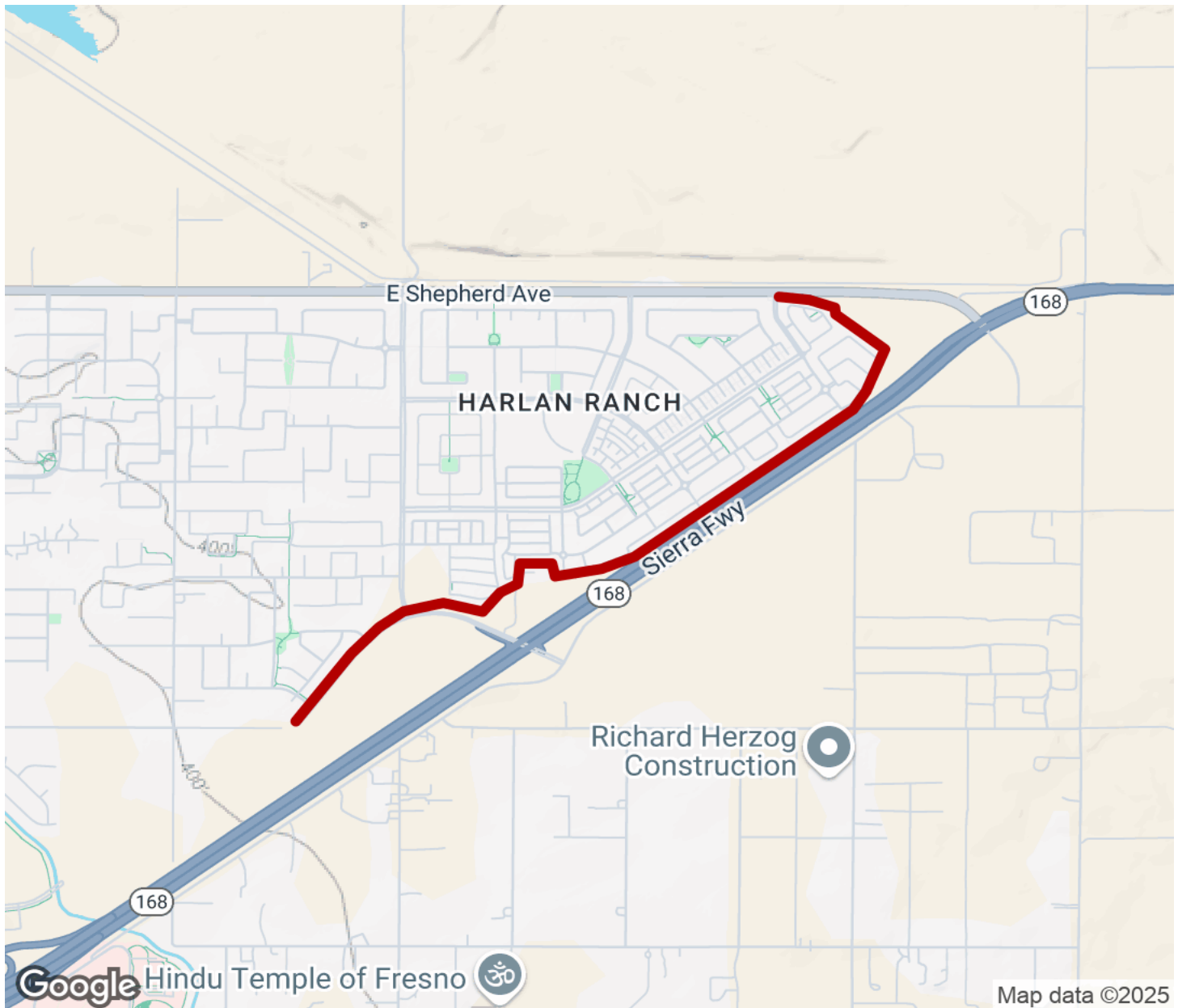
Parking & Trail Access

There is no dedicated parking for this trail. Residents of the adjacent subdivision can join the trail from the access points found at the cul-de-sacs abutting the trail.



Sierra Gateway Trail

California



Trailhead



Restroom



Parking



Water Fountain



Tunnel



TrailLink
by Rails-to-Trails Conservancy

TrailLink.com