



2025

TrailLink Unlimited 

Guides



**Independence
Creek Trail**
Kansas



Independence Creek Trail

Kansas

This gravel hike-and-bike trail sits atop the levy that runs along Independence Creek. At its northern end, the trail is connected to



This gravel hike-and-bike trail sits atop the levy that runs along Independence Creek. At its northern end, the trail is connected to the Lewis and Clark Independence Creek Historic Site by a pedestrian bridge spanning the creek. The historic site located about five miles from downtown Atchison and marks the spot where the two explorers camped on their famous expedition in 1804. The 13-acre historic site features a recreation of a Kanza Indian Earthlodge, as well as interpretive signage.



TrailLink
by Rails-to-Trails Conservancy

TrailLink.com



Independence Creek Trail

Kansas

States: Kansas

Counties: Atchison, Doniphan

Length: 2.3 miles

Trail end points: Lewis and Clark

Independence Creek Historic Site to River Road

Trail surfaces: Gravel

Trail category: Greenway/Non-RT

Trail activities: Bike, Horseback

Riding, Walking

Parking & Trail Access

North end: You can park at the Lewis and Clark Historic Site (19918 314th Rd, Atchison) and use the pedestrian bridge to access the trail. Beginning from downtown, drive north on 2nd Street, continuing onto Sedgewick Road. Take a right on 314th Road to the site. The parking lot will be on your left.



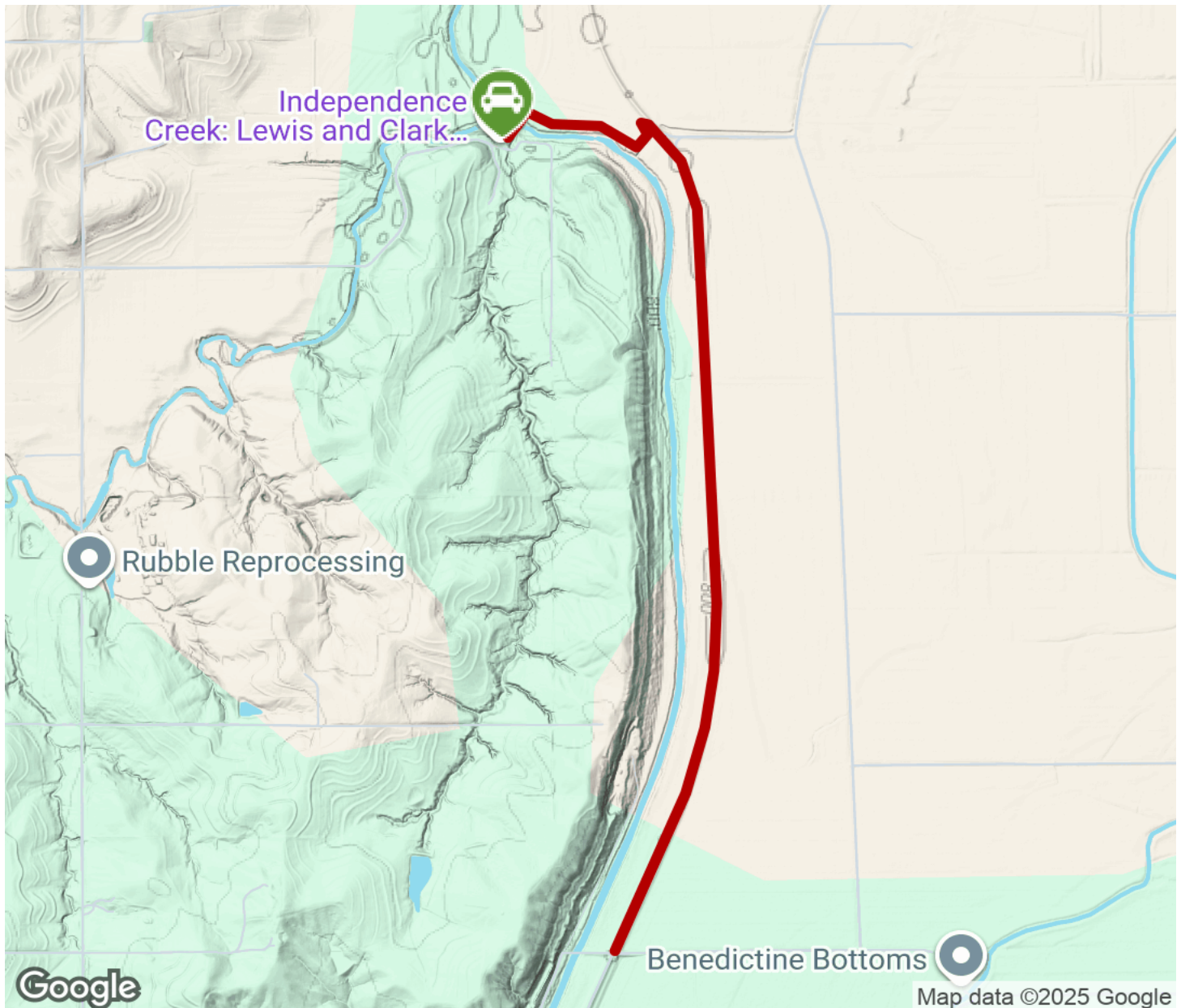
TrailLink
by Rails-to-Trails Conservancy

TrailLink.com



Independence Creek Trail

Kansas



Trailhead



Restroom



Parking



Water Fountain



Tunnel



TrailLink
by Rails-to-Trails Conservancy

TrailLink.com