



2026

TrailLink Unlimited



Guides



GM&O
Heritage Trail
Illinois



GM&O Heritage Trail

Illinois

The GM&O Heritage Trail maintains the legacy of the railroad that once ran through the municipality of Columbia. The right-of-way



The GM&O Heritage Trail maintains the legacy of the railroad that once ran through the municipality of Columbia. The right-of-way was first built by the Cairo & St. Louis Railroad, which by another railroad, which in one iteration was known as the Gulf, Mobile & Ohio Railroad. The railroad changed hands several times before the line fell into disuse and was converted into a walking and biking trail.

The asphalt trail currently extends over a mile-and-a-half, and it is envisioned to be double that length when complete. Walking, bike riding and other non-motorized uses are welcome on the trail.



GM&O Heritage Trail

Illinois

States: Illinois

Counties: Monroe

Length: 1.7miles

Trail end points: Quarry Road to Cherry Street
& Legion Street

Trail surfaces: Asphalt

Trail category: Rail-Trail

Trail activities: Bike, Inline

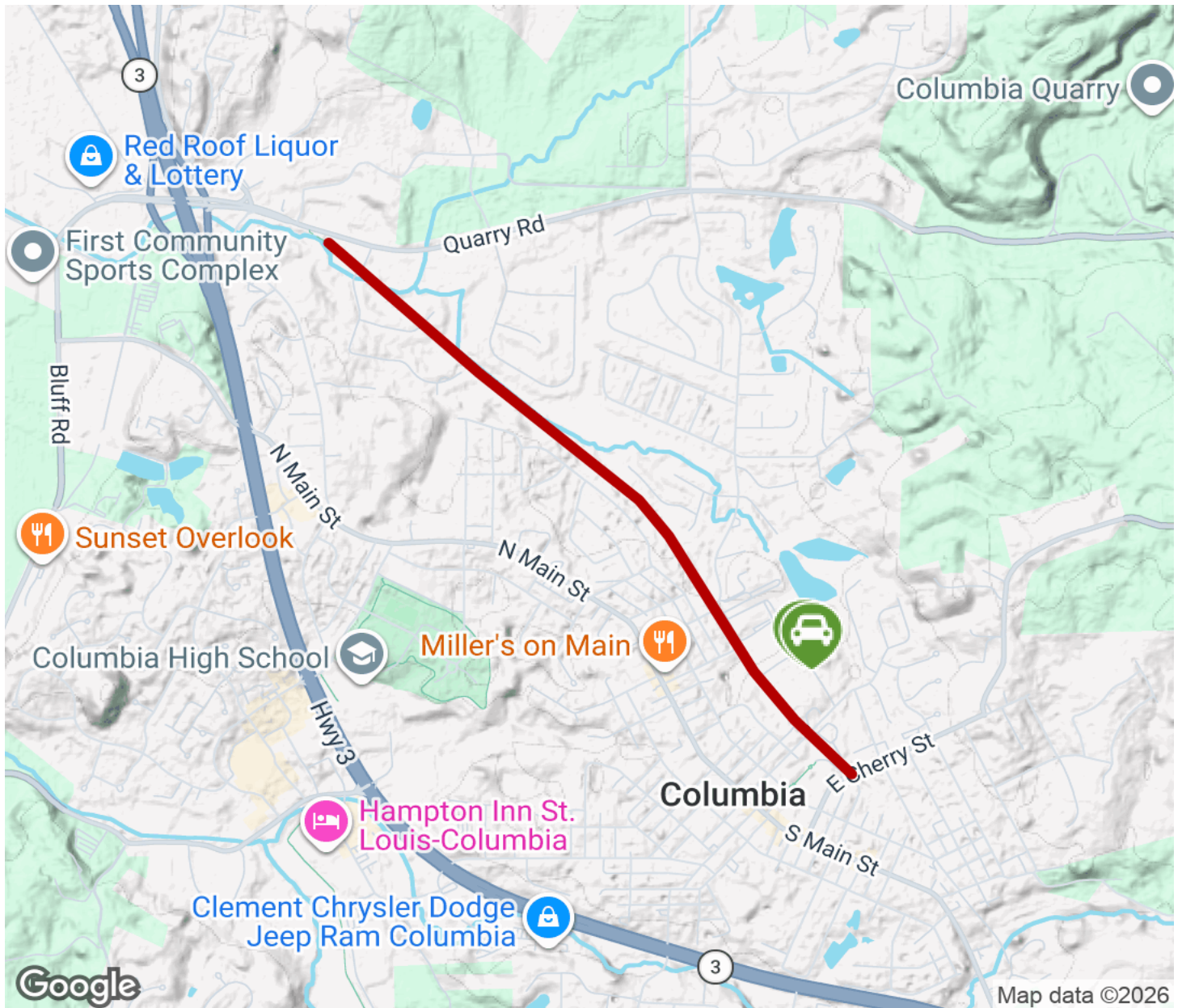
Skating, Walking, Wheelchair Accessible

Parking & Trail Access



GM&O Heritage Trail

Illinois



Trailhead



Restroom



Parking



Water Fountain



Tunnel



TrailLink
by Rails-to-Trails Conservancy

TrailLink.com