



2025

TrailLink Unlimited 

Guides



**Lime Spring
Trail**
Pennsylvania



Lime Spring Trail

Pennsylvania

Currently about a mile in length, the Lime Spring Trail is envisioned to connect several residential communities to the



north. Trail users should be advised that the greenway narrows significantly and the asphalt yields to a concrete sidewalk for the last 500 feet before ending at S. Spring Circle. This sidewalk portion includes several steps and is not bicycle friendly.

Those wishing to avoid the sidewalk can make a left onto a section of the trail that wraps through The Farmstead, a retirement community located immediately west of Rohrerstown proper. After turning onto this gravel paved path, users have the option of either continuing east between condos and the Norfolk Southern RR tracks to Hidden Oak Circle on the west end of Rohrerstown or turning south between the community and a pond to Noll Drive. This portion of the trail is fairly level and can easily be used by cyclists and parents pushing baby strollers.

One of many short greenways being built to connect communities in the Lancaster suburbs, the Lime Spring Trail will eventually be extended to link other nearby subdivisions as they are constructed, and will stretch for 4 miles when completed.

Currently about a mile in length, the Lime Spring Trail is envisioned to connect several residential communities to the nearby Lancaster suburb of Rohrerstown as well as to shopping centers, office buildings and an industrial park when completed.

The trail is currently comprised of an old asphalt farm lane that begins at Route 23 (Marietta Ave.) immediately east of the overpass across Route 30 and extends south along the west end of Lime Spring Village, a condo complex that is under construction (as of Aug. 2021).

Despite paralleling the Route 30 expressway to its west, this segment of the trail is lined with shade trees and provides a cool respite from the summer heat.

The asphalt portion of the trail then passes beneath the Norfolk Southern Rail Line via a short tunnel and enters The Courts At Lime Spring Village subdivision from the



TrailLink
by Rails-to-Trails Conservancy

TrailLink.com



Lime Spring Trail

Pennsylvania

States: Pennsylvania

Counties: Lancaster

Length: 1miles

Trail end points: Route 23, Marietta Ave. to Noll Drive, plus two others, on Spring Circle in Lime Spring Courts and Hidden Oak Drive

Trail surfaces: Asphalt, Concrete, Gravel

Trail category: Greenway/Non-RT

Trail activities: Bike, Walking, Wheelchair Accessible

Parking & Trail Access

The trail can be accessed from the parking lot of the Lime Spring Courts condo complex or the streets of The Farmstead retirement community.



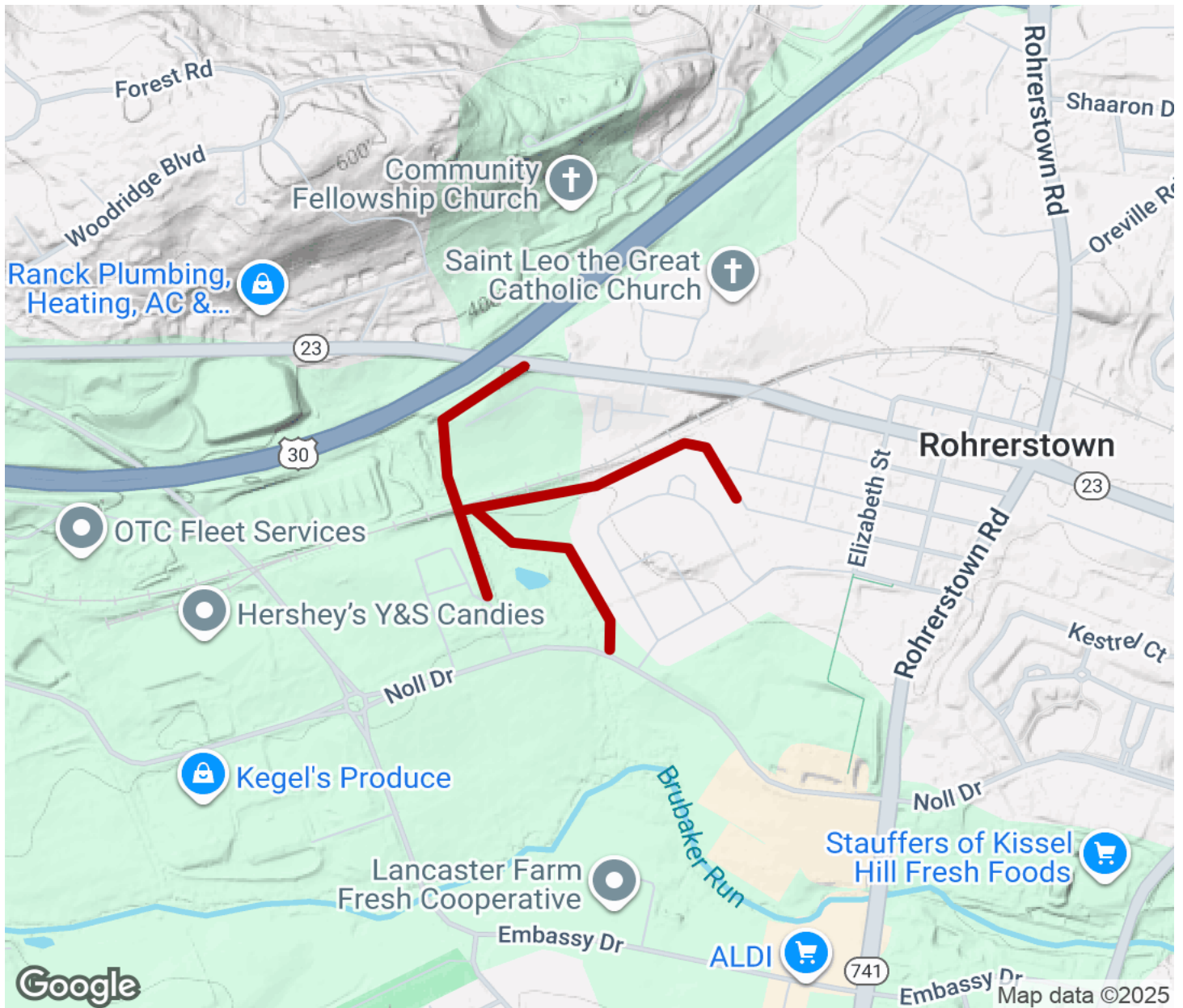
TrailLink
by Rails-to-Trails Conservancy

TrailLink.com



Lime Spring Trail

Pennsylvania



Trailhead



Restroom



Parking



Water Fountain



Tunnel



TrailLink
by Rails-to-Trails Conservancy

TrailLink.com