



2026

TrailLink Unlimited 

Guides



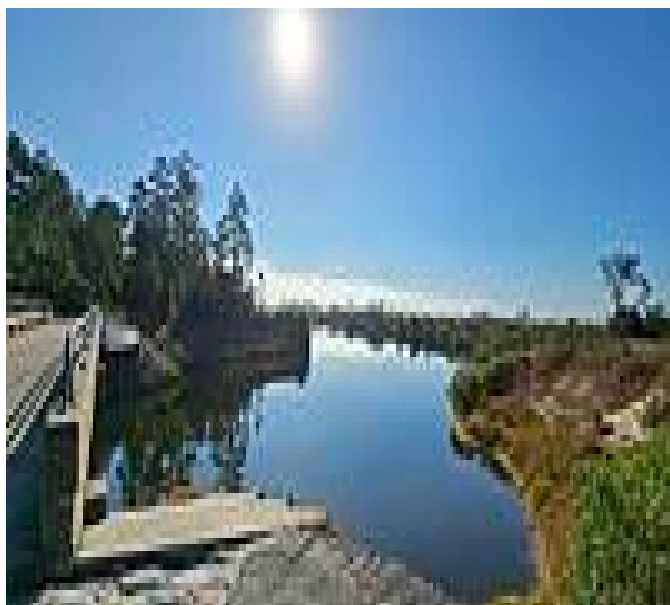
**Spring Creek
Greenway**
Texas



Spring Creek Greenway

Texas

The Spring Creek Greenway in Harris County, Texas, traces the south side of Spring Creek for more than 23 miles. The trail



left behind—a horse-friendly trail parallels the paved one. Visitors with horses should be aware that they are required to show proof of a negative test for Equine Infectious Anemia (EIA) within the past 12 months. Fishing is also welcome, with a license. Visit the Harris County website for more information.

The Spring Creek Greenway in Harris County, Texas, traces the south side of Spring Creek for more than 23 miles. The trail provides opportunities for walking, biking, wildlife watching and simply being immersed in nature. The greenway is one of only two in Harris County that has not been developed or channelized, and nature abounds in its waters and along its white sand shores, from salamanders and bass to bald eagles and migrating birds. The surrounding forest boasts a variety of tree species including mature sycamores, bald cypress and palmettos. Parks dot the route, offering access to the trail as well as additional recreational opportunities like picnicking, outdoor education and unpaved trails.

The trail is 10-feet wide and paved, providing ample room for walkers and cyclists to enjoy. Horseback riders are not



TrailLink
by Rails-to-Trails Conservancy

TrailLink.com



Spring Creek Greenway

Texas

States: Texas

Counties: Harris

Length: 23.43miles

Trail end points: Fox Hunt Dr. to Energy Dr./
Springwoods Village Parkway to N. Freeway
Service Rd. to Eastex Fwy

Trail surfaces: Asphalt, Concrete

Trail category: Greenway/Non-RT

Trail activities: Bike, Fishing, Horseback
Riding, Inline Skating, Walking

Parking & Trail Access

The SCG can be accessed at U.S. 59 near the San Jacinto River and via the parks along its length, including the Jesse H. Jones Park & Nature Center (20634 Kenswick Dr, Humble), Carter Park (7221 Treaschwig Rd, Spring), Pundt Park (4129 Spring Creek Dr, Spring), and Dennis Johnston Park (709 Riley Fuzzel Rd, Spring). Parking is available at a number of locations along the trail. Visit the [TrailLink map](#) for all options and detailed directions.



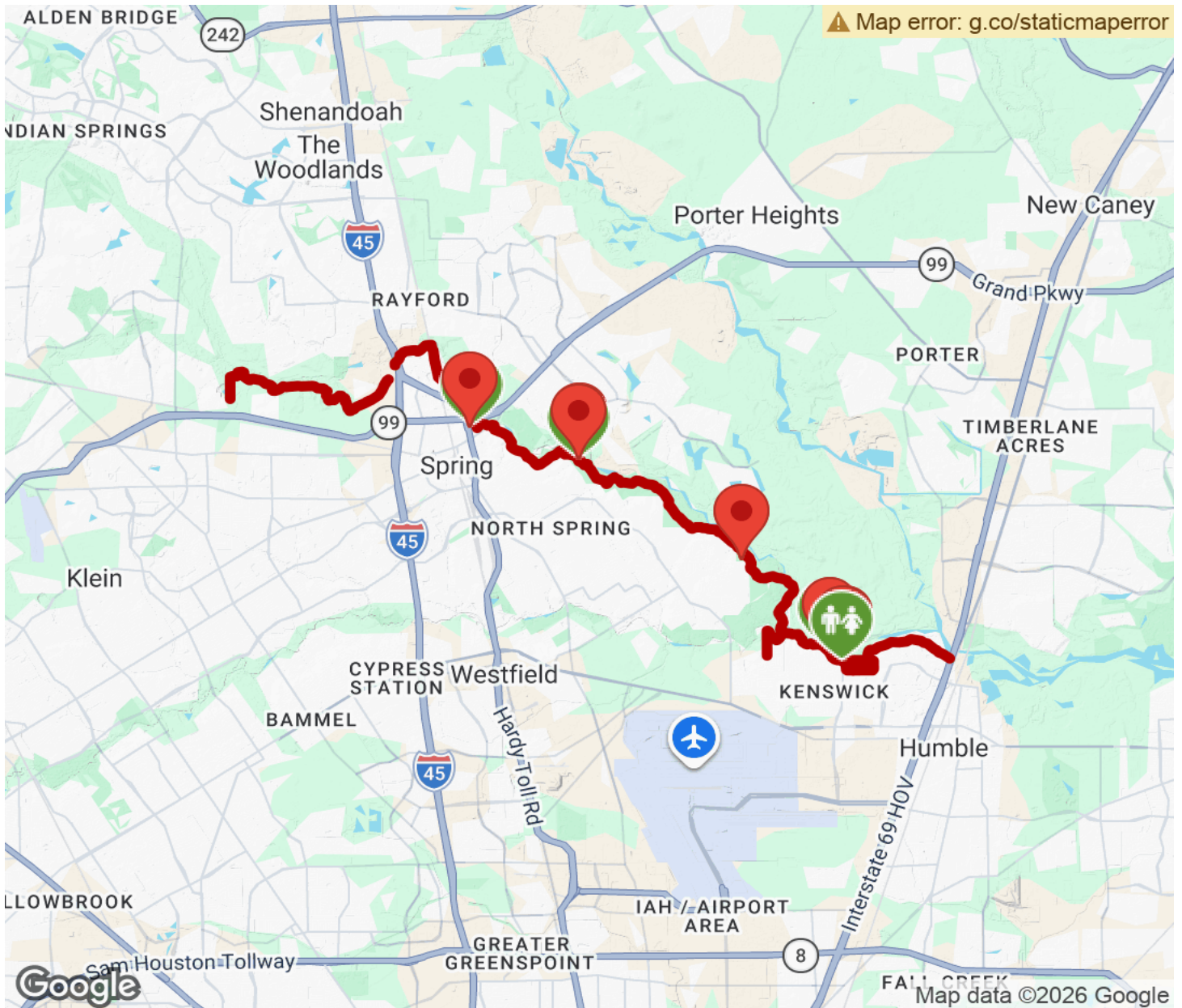
TrailLink
by Rails-to-Trails Conservancy

TrailLink.com



Spring Creek Greenway

Texas



TrailLink
by Rails-to-Trails Conservancy

TrailLink.com