



2024

TrailLink Unlimited



Guides



# **Senoia Multi-Use Trail**

*Georgia*



## **Senoia Multi-Use Trail**

Georgia

*The Senoia Multi-Use Trail is a 10-foot-wide, paved path that runs from the Ivy Ridge subdivision to Seavy Street. The shared-use path*



The Senoia Multi-Use Trail is a 10-foot-wide, paved path that runs from the Ivy Ridge subdivision to Seavy Street. The shared-use path has a mix of paved sections and wooden boardwalks, which are used in the flood plain areas. The trail stays flat and is dog friendly.

Providing a vital link between Senoia's parks, neighborhoods, local businesses, commercial areas, and larger nearby trail networks, the path is open to pedestrians and bicyclists in the City of Senoia.

In addition to serving as a transportation alternative for the residents and visitors of Senoia as they navigate the city, the trail is an enjoyable green space for recreation.



# Senoia Multi-Use Trail

Georgia

**States:** Georgia

**Counties:** Fayette

Length: 1.5miles

**Trail end points:** Ivy Ridge to Seavy St

**Trail surfaces:** Asphalt,Boardwalk

**Trail category:** Greenway/Non-RT

**Trail activities:** Bike,Walking

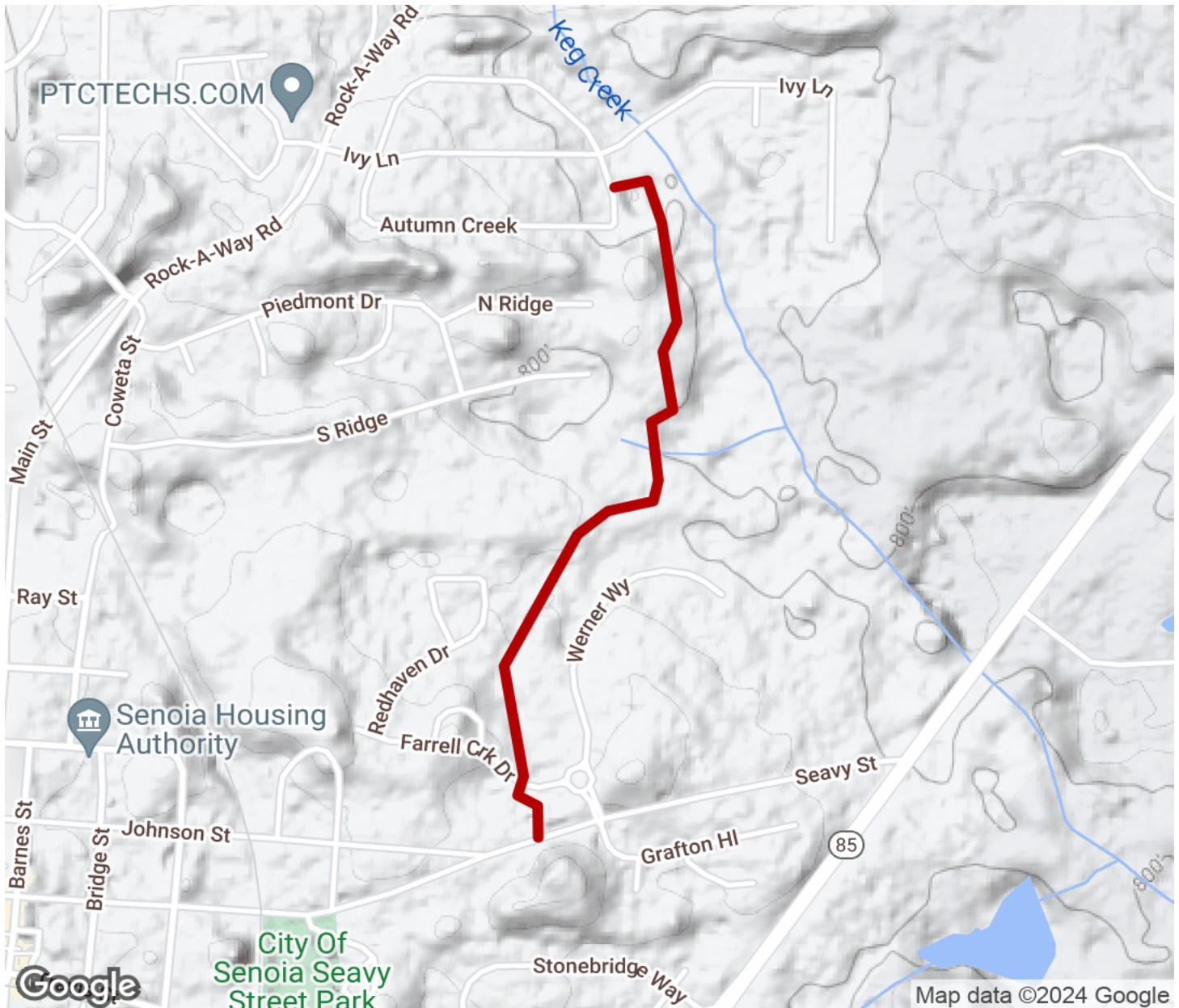
## Parking & Trail Access

There is no designated parking for this trail.



# Senoia Multi-Use Trail

Georgia



Trailhead



Restroom



Parking



Water Fountain



Tunnel



**TrailLink**  
by Rails-to-Trails Conservancy

**TrailLink.com**