



2025

TrailLink Unlimited 

Guides



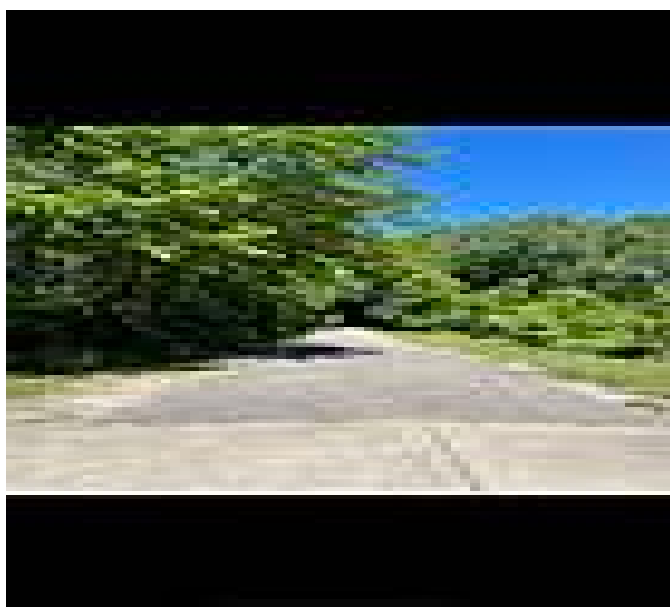
**Singing Sands
Trail**
Indiana



Singing Sands Trail

Indiana

The Singing Sands Trail stretches over 4 miles across Michigan City. The paved trail picks up from the eastern end of the Calumet



The Singing Sands Trail will be extended east to Meer Road at the Michigan state line, adding another 5 miles to its length. The trail is part of the Marquette Greenway, a 60-mile paved trail project stretching between Chicago and New Buffalo, Michigan.

The Singing Sands Trail stretches over 4 miles across Michigan City. The paved trail picks up from the eastern end of the [Calumet Trail](#) at US/12 at the border of Porter and LaPorte Counties. The trail rambles through wetlands of the Indiana Dunes National Park briefly before transitioning to an urban industrial setting as it parallels the railroad up to the power generation station. From there, the trail enters the heart of the city, passing the courthouse, public library and city hall and the city's arts district. The trail then pivots to follow East Michigan Boulevard, providing access to Charles R. Westcott Park and the Trail Creek Marina. At 8th Street, trail users will turn left to continue along the trail along Trail Creek Greenway, heading to Winding Creek Cove Park. A bridge carries users over Trail Creek to the final stretch of the trail, which ends at a road called Liberty Trail.



Singing Sands Trail

Indiana

States: Indiana

Counties: La Porte

Length: 3.6miles

Trail end points: Calumet Trail at US 12 to
Liberty Trail

Trail surfaces: Asphalt

Trail category: Rail-Trail

Trail activities: Bike, Walking

Parking & Trail Access

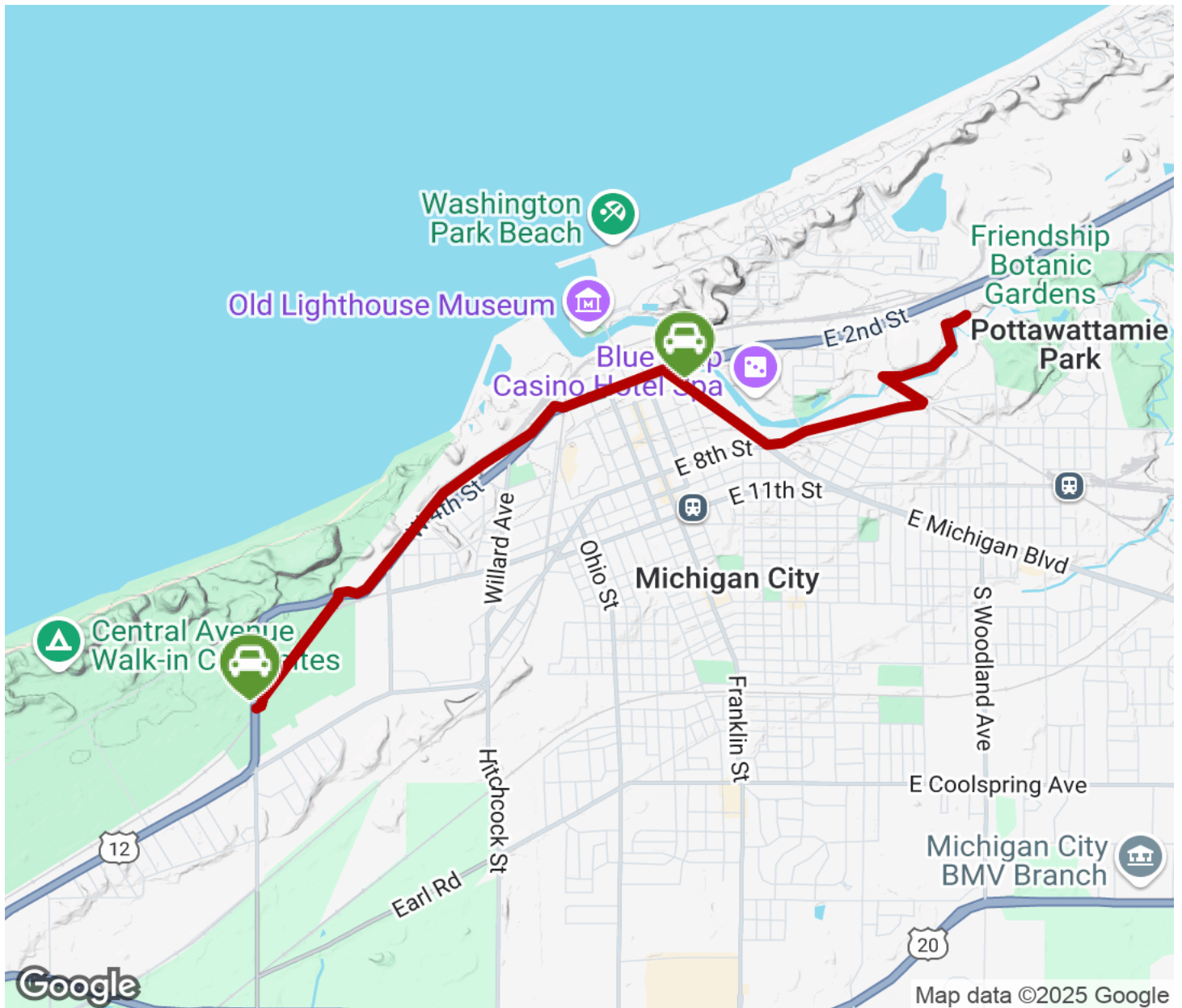
On the western side of the trail you can park at the US 12 Trailhead where the Calumet Trail and the Singing Sands Trail meet.

Alternatively parking includes Charles R. Westcott Park (at the corner of W. Michigan Blvd/ US and E. Michigan Blvd); Winding Creek Cove Park (E. 8th St & N Dickson St)



Singing Sands Trail

Indiana



Trailhead



Restroom



Parking



Water Fountain



Tunnel



TrailLink
by Rails-to-Trails Conservancy

TrailLink.com