



2024

TrailLink Unlimited 

Guides



**Bethalto
Arboretum
Trail**
Illinois



Bethalto Arboretum Trail

Illinois

The trail is a popular local recreation spot. The trail first winds through the Bethalto Arboretum, about a half-mile, shaded stroll



The trail is a popular local recreation spot. The trail first winds through the Bethalto Arboretum, about a half-mile, shaded stroll through stands of oak, maple and over 80 other tree species. The arboretum was created in 1966, built on an abandoned railbed. An extension in 2020 continued the trail into Bethalto Park/ Central Park, terminating at Prairie Street. The trail provides access to the park's amenities including its playground, splash pad, tennis courts, baseball diamond, and skate park.

There larger vision is to continue to build on the old railroad corridor, extending it east to Alton.



Bethalto Arboretum Trail

Illinois

States: Illinois

Counties: Madison

Length: 0.9miles

Trail end points: Prairie Street to S. Moreland
Road

Trail surfaces: Asphalt

Trail category: Rail-Trail

Trail activities: Bike, Walking

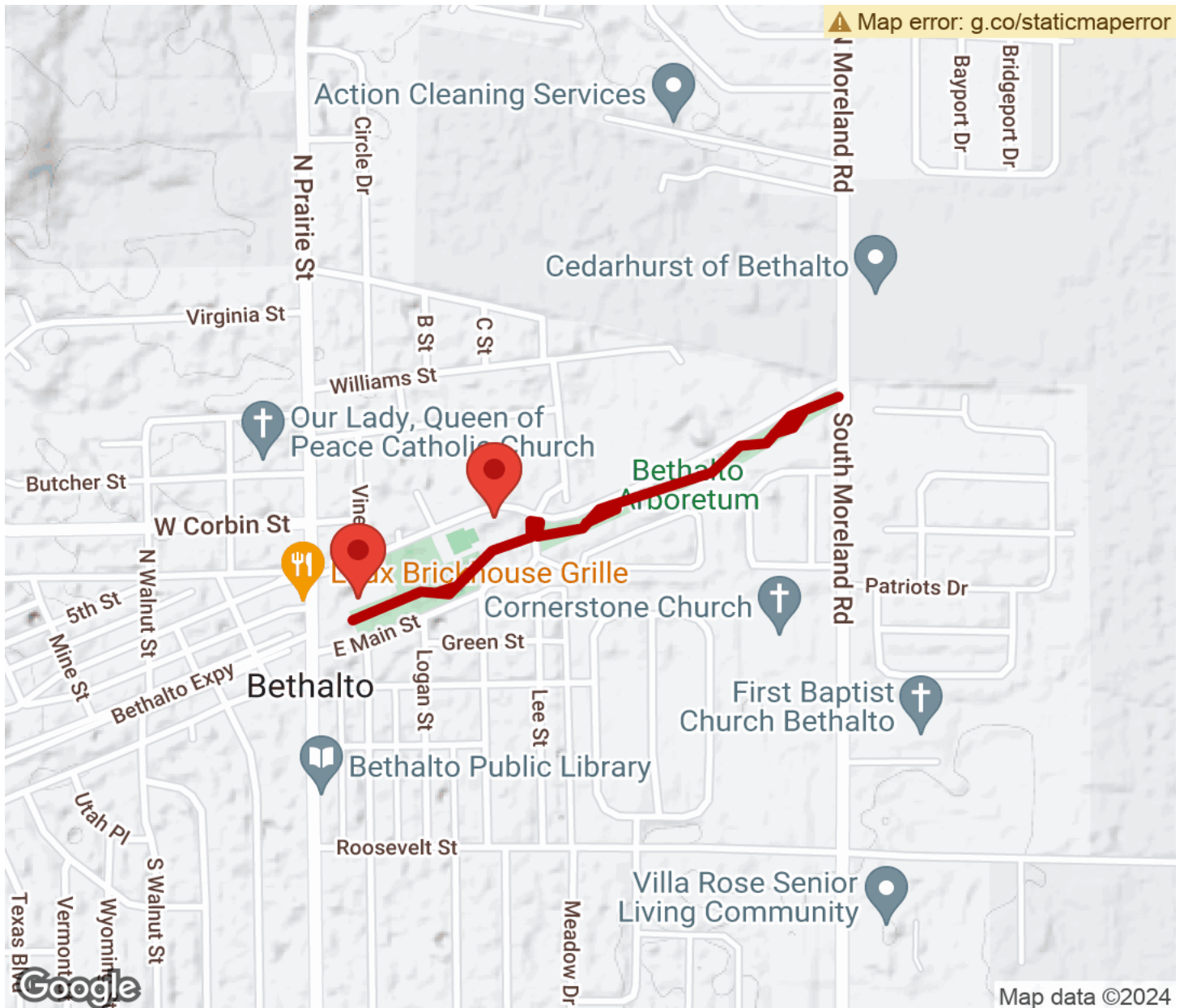
Parking & Trail Access

Park at the Village Hall (213 N Prairie St, Bethalto, IL). It is adjacent to Central Park



Bethalto Arboretum Trail

Illinois



Trailhead



Restroom



Parking



Water Fountain



Tunnel



TrailLink
by Rails-to-Trails Conservancy

TrailLink.com