



2025

TrailLink Unlimited 

Guides



**Cleveland
Park Spur**
South Carolina



Cleveland Park Spur

South Carolina

This 1.2 mile paved path meanders through Greenville's Cleveland Park, following Richland Creek and providing access to the



Referred to by locals as "City Park" the recreation area includes playground areas, workout stations, tennis courts, a volleyball court, a softball/baseball field, basketball courts, picnic shelters, and water fountains. Cleveland Park is also the location of the Rock Quarry Garden, the Fernwood Nature Trail, the Vietnam Veterans Memorial and the Greenville Zoo.

Restrooms are not available, except for in the zoo.

This 1.2 mile paved path meanders through Greenville's Cleveland Park, following Richland Creek and providing access to the downtown recreation area's various features. The trail surface is smooth concrete and the route is quite flat. The Cleveland Park Spur offers a pleasant and easy way to experience nature and the park's facilities.

Beginning at the north end of Cleveland Park by Lakehurst St and Cleveirvine Ave, the trail diverges, loops and meets itself as it extends throughout the park. The trail ends near the southern end of the park, the trail connects with Swamp Rabbit Trail and Access to the trail is available at multiple points from the streets surrounding the park, including from Lakehurst St, Cleveirvine Ave, Woodland Way, and Cleveland Park Dr where parking is available.



Cleveland Park Spur

South Carolina

States: South Carolina

Counties: Greenville

Length: 1.2miles

Trail end points: Lakehurst St & Cleveirvine Ave to Cleveland Park Dr & Swamp Rabbit Trail

Trail surfaces: Concrete

Trail category: Greenway/Non-RT

Trail activities: Bike, Wheelchair

Accessible, Walking

Parking & Trail Access

Free parking is available at Cleveland Park Parking (150 Cleveland Park Dr), as well as a few other nearby parking lots along Cleveland Park Dr.



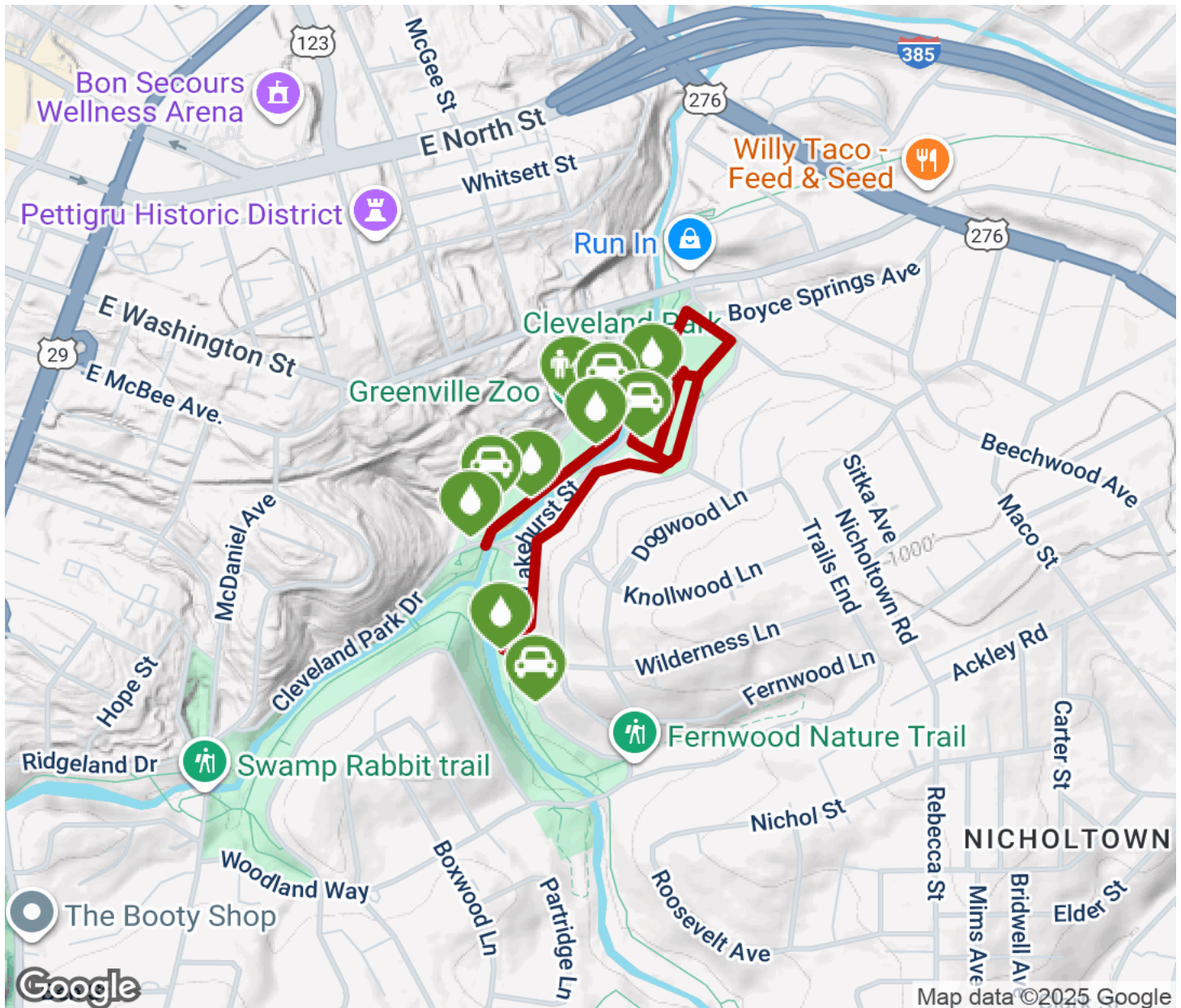
TrailLink
by Rails-to-Trails Conservancy

TrailLink.com



Cleveland Park Spur

South Carolina



Trailhead



Restroom



Parking



Water Fountain



Tunnel



TrailLink
by Rails-to-Trails Conservancy

TrailLink.com