



2025

TrailLink Unlimited 

Guides   



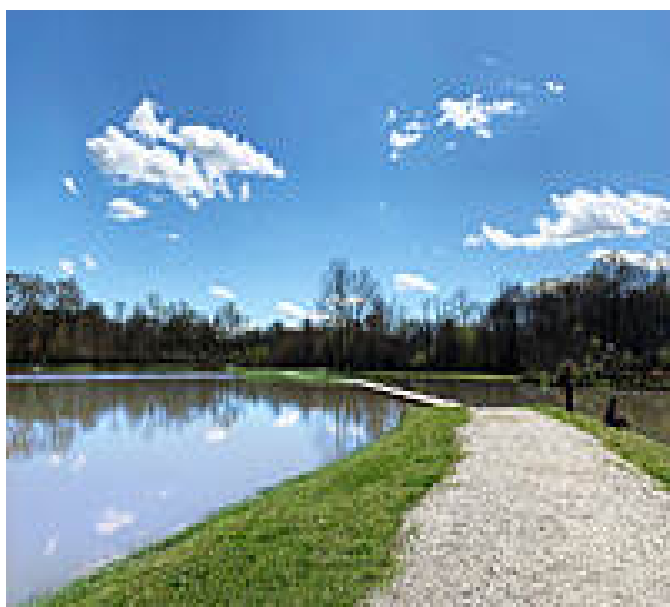
**Patrick
Square Lake
Loop**
South Carolina



Patrick Square Lake Loop

South Carolina

This 12-ft wide paved trail encircles the fresh-water Patrick Square Lake and continues alongside Eighteenmile Creek through a



This 12-ft wide paved trail encircles the fresh-water Patrick Square Lake and continues alongside Eighteenmile Creek through a wooded area to Nettles Park. A bridge over the creek connects the loop to the Nettles Park Spur Trail, a paved cement path that runs through Nettles Park to the park's parking lot and the Nettles Dog Park. Nettles Park has a playground, restrooms, park kiosk, picnic shelters, baseball fields, softball fields, tennis courts, and soccer fields.

The Patrick Square Lake Loop is officially part of the Patrick Square planned-community, but it is open to the public and is included in the Green Crescent Trail network.



TrailLink
by Rails-to-Trails Conservancy

TrailLink.com



Patrick Square Lake Loop

South Carolina

States: South Carolina

Counties: Anderson, Pickens

Length: 0.6 miles

Trail end points: Thomas Green Blvd &
Pershing Ave to Nettles Park

Trail surfaces: Asphalt, Boardwalk, Concrete

Trail category: Greenway/Non-RT

Trail activities: Bike, Walking

Parking & Trail Access

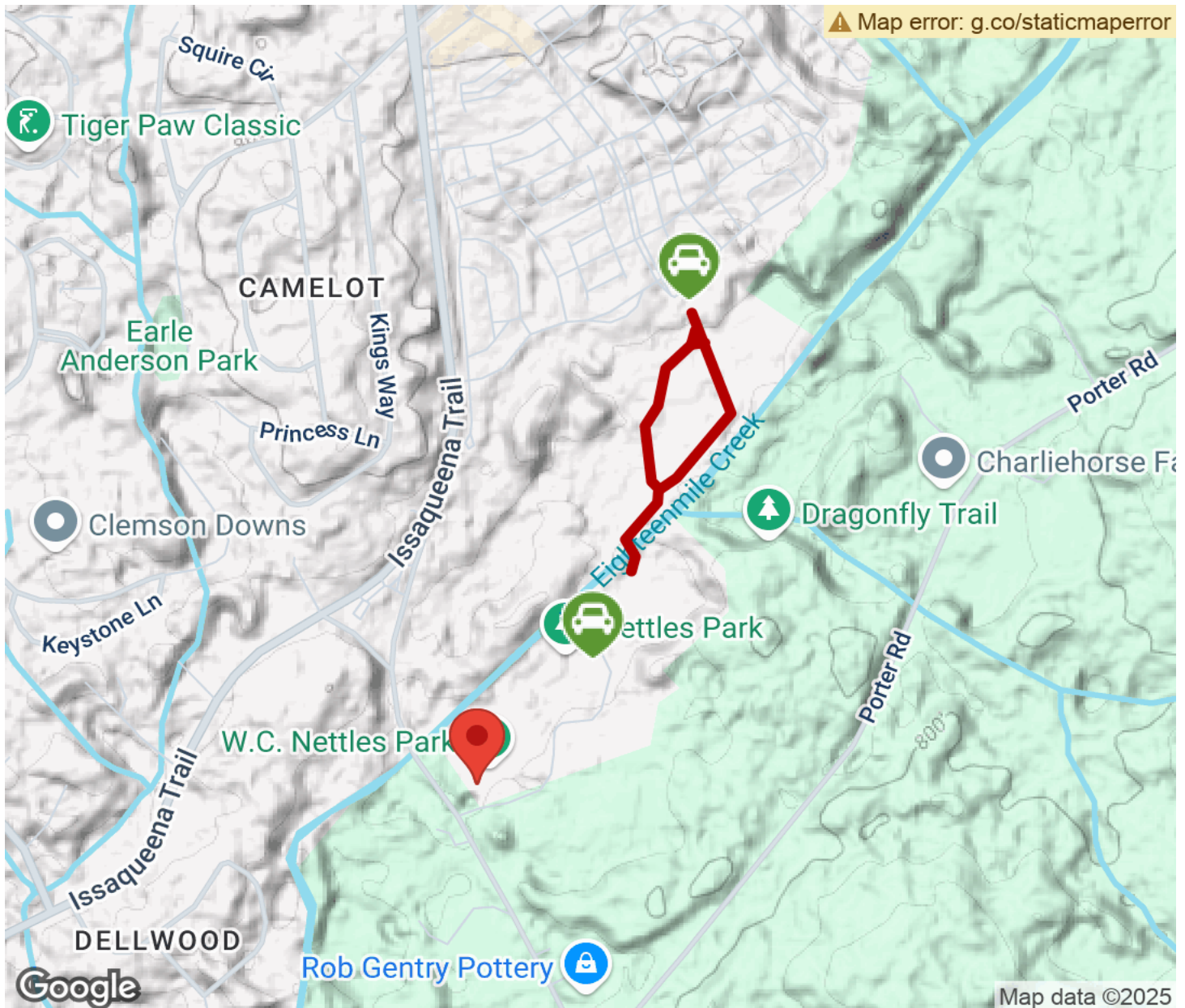
Access the trail by the intersection of Pershing Ave and Thomas Green Blvd or through Nettles Park via the the Nettles Park Spur Trail.

Visitors can park in the Patrick Square Town Center or the Nettles Park parking lot (102 Nettles Park Road, Clemson).



Patrick Square Lake Loop

South Carolina



Trailhead



Restroom



Parking



Water Fountain



Tunnel



TrailLink
by Rails-to-Trails Conservancy

TrailLink.com