



2024

TrailLink Unlimited 

Guides



**Trestle Trail
(Lebanon)**
Illinois



Trestle Trail (Lebanon)

Illinois

Named for the former Baltimore & Ohio (CSX) railroad bridge it passes under, the Trestle Trail provides a quiet short passage



Named for the former Baltimore & Ohio (CSX) railroad bridge it passes under, the Trestle Trail provides a quiet short passage through the woods along Little Silver Creek on southeastern edge of the town of Lebanon. As the first cycling-safe link to the county road network between south and east Lebanon, this short but important trail connects the dead-ends of East McAllister Street and Korte Sewald Road.



Trestle Trail (Lebanon)

Illinois

States: Illinois

Counties: St. Clair

Length: 0.3miles

Trail end points: E McAllister St to Korte
Sewald Rd (Lebanon Township)

Trail surfaces: Crushed Stone

Trail category: Greenway/Non-RT

Trail activities: Bike, Walking

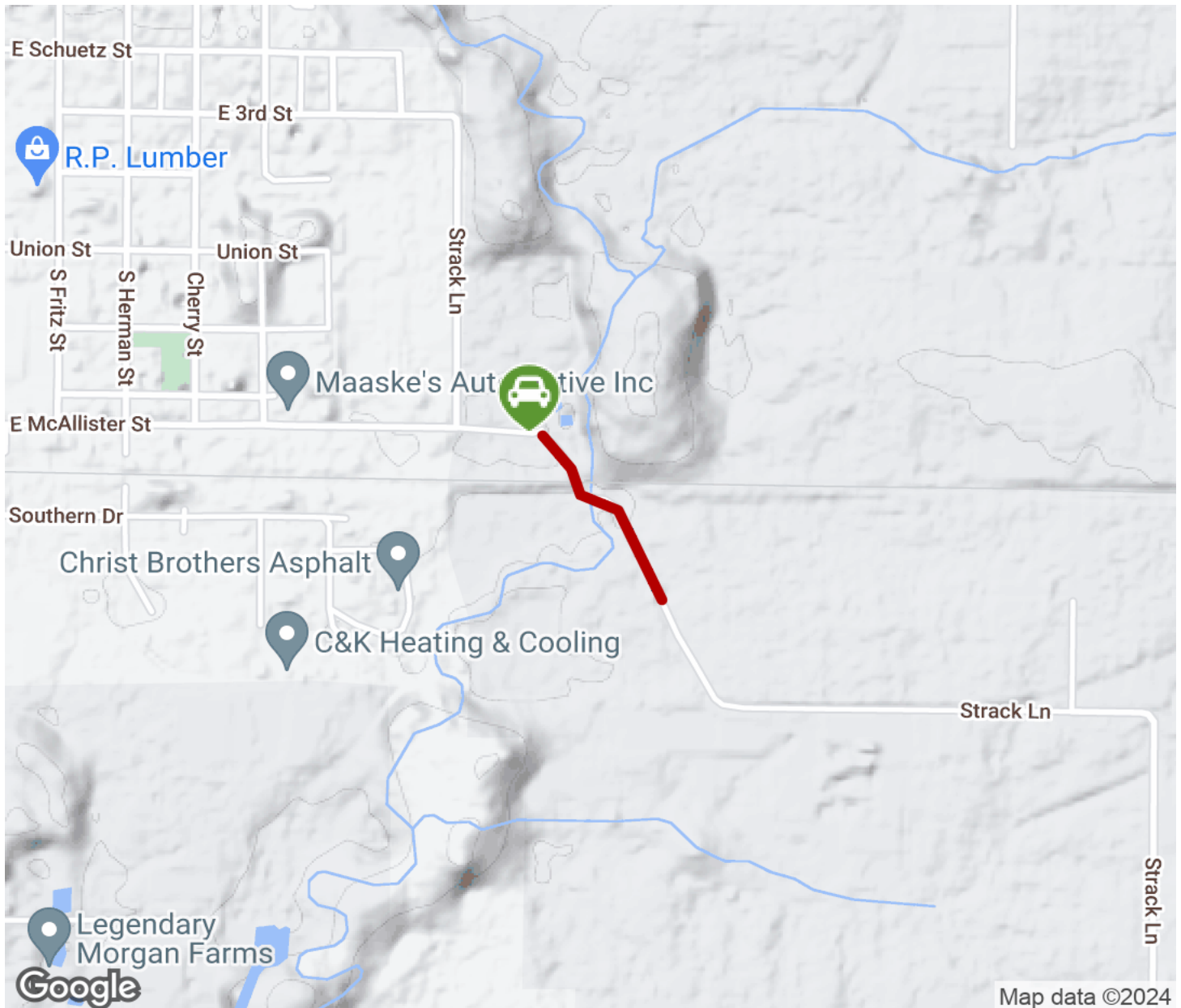
Parking & Trail Access

Parking is available at the west end of the trail on East McAllister Street.



Trestle Trail (Lebanon)

Illinois



Trailhead



Restroom



Parking



Water Fountain



Tunnel



TrailLink
by Rails-to-Trails Conservancy

TrailLink.com