



2025

TrailLink Unlimited 

Guides



**Duluth Cross
City Trail**
Minnesota



Duluth Cross City Trail

Minnesota

Note: For information on trail development and closures, please see the City of Duluth Parks & Recreation website. Once finished,



runs next to the freeway and the area of Lower Michigan Street. Segment two, also known as the River Route, extends into Irving Park in the heart of West Duluth. Segment six will follow the abandoned BN railway line from Raleigh St to the Munger Trailhead.

Note: For information on trail development and closures, please see the City of Duluth Parks & Recreation [website](#).

Once finished, the Duluth Cross City Trail will be a 10.3-mile multi-purpose paved trail system that provides a connection between the Lakewalk in downtown Duluth and the Willard Munger State Trail, as well as the Western Waterfront Trail. Offering safe access to nature areas in western Duluth, the trail has exceptional views of the St. Louis River Corridor and estuary. This trail will fill a gap in a longer state trail from central Minnesota to the North Shore of Lake Superior.

The Duluth Cross City Trail is being built in seven segments, of which the first two have been completed. Passing through Lincoln Park, the first section briefly



Duluth Cross City Trail

Minnesota

States: Minnesota

Counties: St. Louis

Length: 6miles

Trail end points: Sister Cities Park on Monarch
Hwy to Irving Park & Keene Creek on S Central
Ave

Trail surfaces: Asphalt

Trail category: Rail-Trail

Trail activities: Bike, Wheelchair
Accessible, Walking

Parking & Trail Access



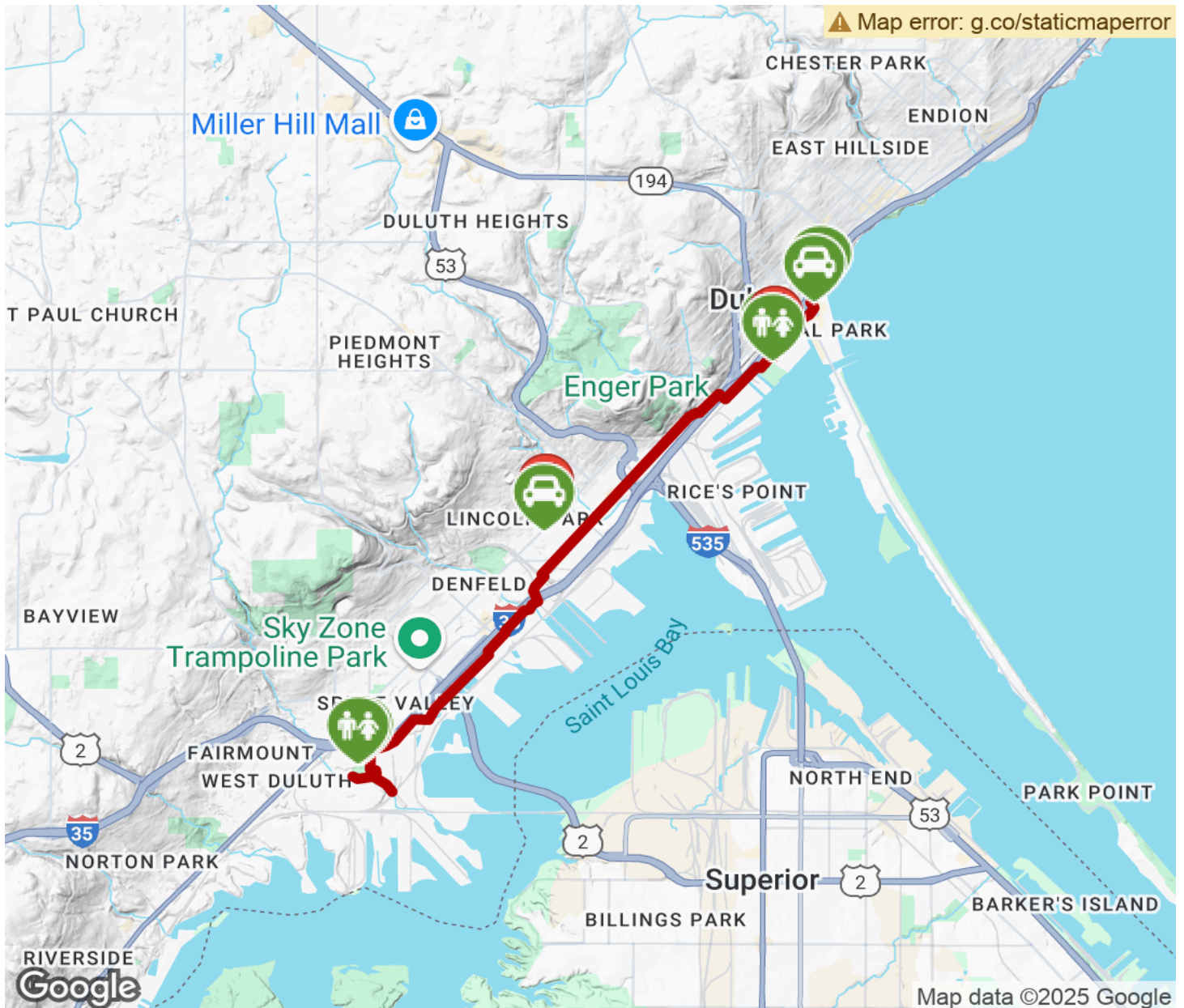
TrailLink
by Rails-to-Trails Conservancy

TrailLink.com



Duluth Cross City Trail

Minnesota



Trailhead



Restroom



Parking



Water Fountain



Tunnel



TrailLink
by Rails-to-Trails Conservancy

TrailLink.com