



2026

TrailLink Unlimited



Guides



Bridgeport Rail Trail

West Virginia



Bridgeport Rail Trail

West Virginia

This short paved path runs between an active railroad and Simpson Creek in the City of Bridgeport. Connecting Bridgeport City Park



This short paved path runs between an active railroad and Simpson Creek in the City of Bridgeport. Connecting Bridgeport City Park (250 City Park Dr) with Bridgeport's public recreational area that includes basketball courts, tennis courts, the City Pool, and the offices for the City's Department of Parks & Recreation. From its southern endpoint at the dead-end of Railway Rd, the sparsely wooded trail winds along the creek and ends at the City Park, which has baseball fields, basketball courts, a playground, trash receptacles, drinking fountains, restrooms (including an accessible restroom), a little free library, and a large picnic shelter. There are also benches along the trail providing places to rest on the route.



Bridgeport Rail Trail

West Virginia

States: West Virginia

Counties: Harrison

Length: 0.8miles

Trail end points: 250 City Park Dr to Railroad St (Bridgeport)

Trail surfaces: Asphalt

Trail category: Rail-Trail

Trail activities: Bike, Inline

Skating, Walking, Wheelchair Accessible

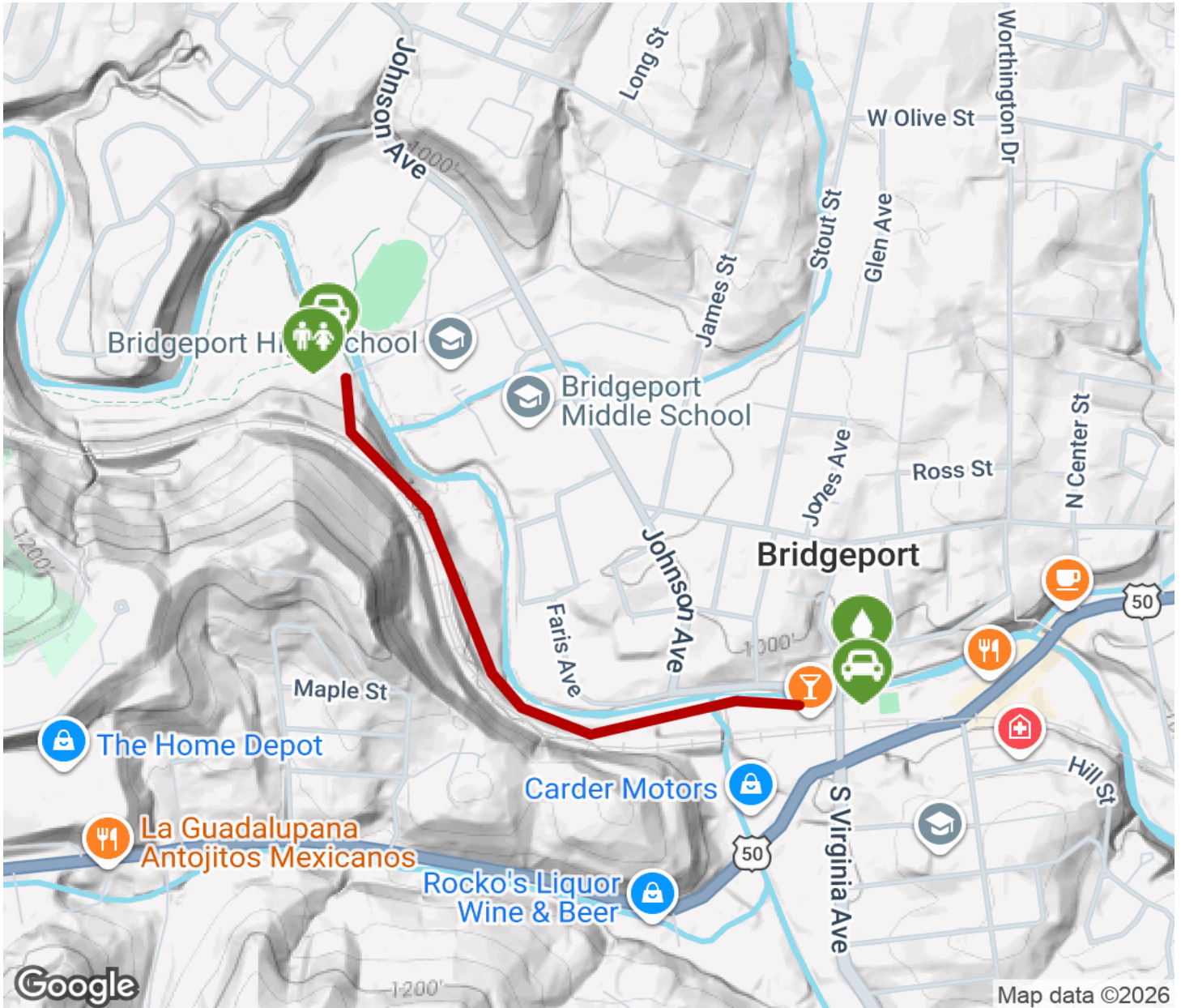
Parking & Trail Access

Parking is available at the northwestern end of the trail in a large lot at Bridgeport City Park (250 City Park Dr), which has several accessible spaces. At the southern end, parking is available in several parking lots by the City's basketball courts, tennis courts, and the City Pool. Access to these parking lots is on N Virginia Ave between Northwestern Turnpike and Worthington Dr. Accessible parking spaces are available.



Bridgeport Rail Trail

West Virginia



Trailhead



Restroom



Parking



Water Fountain



Tunnel



TrailLink
by Rails-to-Trails Conservancy

TrailLink.com