



2025

TrailLink Unlimited 

Guides



**Ballpark to  
Ballpark Trail**  
*Iowa*



## Ballpark to Ballpark Trail

Iowa

*The Ballpark to Ballpark Trail quite logically gets its name from the two ballparks situated at either end of its route and the increased*



County Road F32. This section includes a half-mile of on-street bike route through the Town of Panama. An additional section of off-street trail extends a quarter mile to the south ending at County Road F32. This off-street section runs adjacent to State Highway 191.

When completed, the trail's southern trailhead will be just past the Portsmouth Iowa Ballpark and will result in about 7 miles of trail joining the communities of Panama and Portsmouth Iowa. Future construction will extend the off-street trail another 6 miles to Portsmouth. This section will also run adjacent to State Highway 191. The ultimate goal is to extend the trail to Pottawattamie County, where it will connect to trails in Council Bluffs and Omaha, as well as the Wabash Trace Nature Trail.

The Ballpark to Ballpark Trail quite logically gets its name from the two ballparks situated at either end of its route and the increased connections it will create. Funded almost entirely by the local community, the first phase of the eventual 7-mile Ballpark to Ballpark Trail is complete and phase 2 will add an additional mile with construction starting in 2023.

The trail's northern endpoint is located at the north end of Panama in Whispering Pines Park, just across from State Highway 191 and the Panama Ballpark. There are restrooms, water, picnic shelters, tables, and parking available here.

As of 2022, the trail is a mile long and its southern endpoint is by the intersection of State Highway 191 and



# Ballpark to Ballpark Trail

*Iowa*

**States:** Iowa

**Counties:** Shelby

Length: 1miles

**Trail end points:** Whispering Pines Park to  
State Highway 191 & CR32

**Trail surfaces:** Asphalt, Concrete

**Trail category:** Greenway/Non-RT

**Trail activities:** Bike, Walking

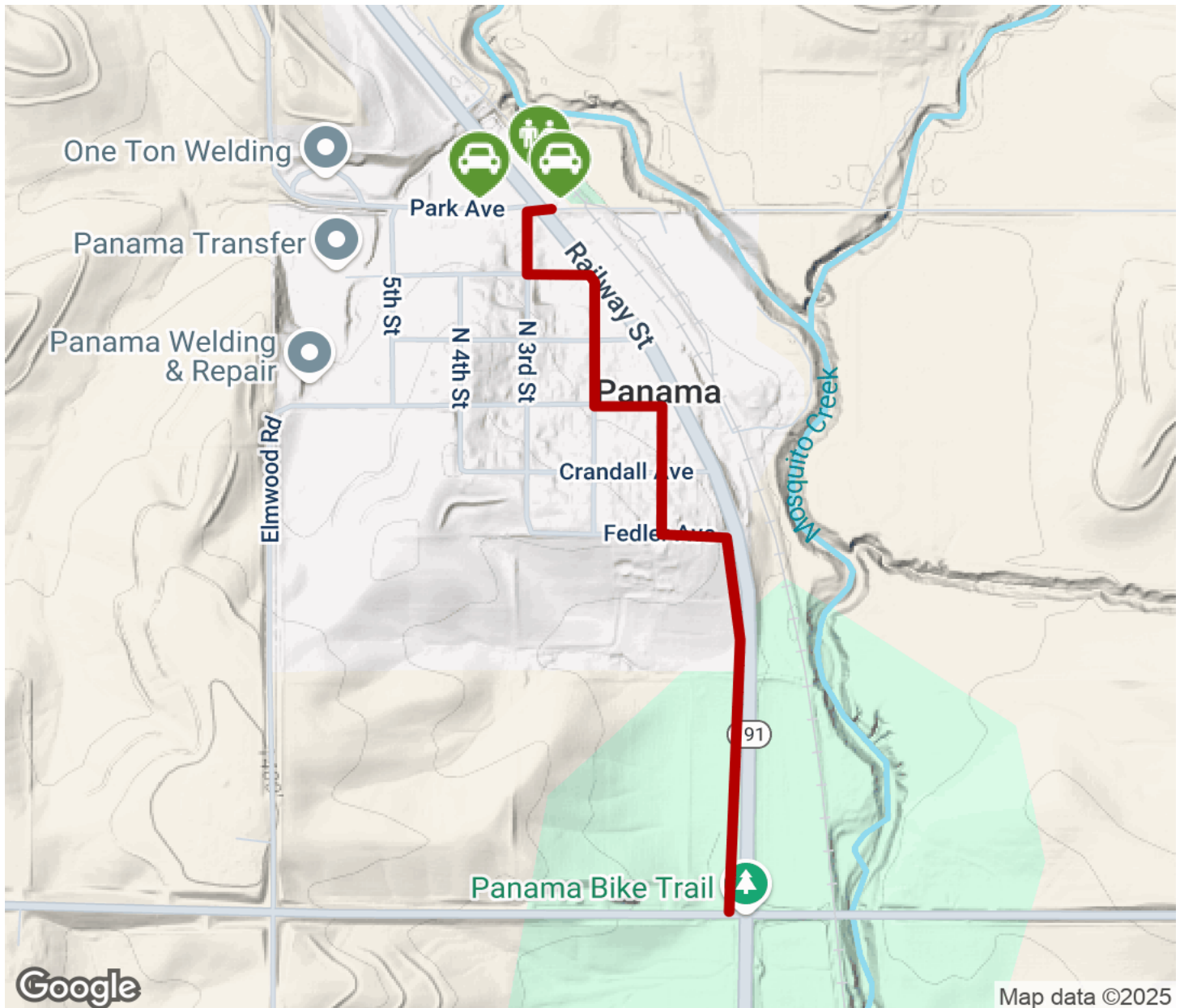
## Parking & Trail Access

From Interstates 80 & 880, head north on State Highway 191 to Panama. Whispering Pines Park is at the north end of town on the right side. Parking is available here as well.



# Ballpark to Ballpark Trail

Iowa



Trailhead



Restroom



Parking



Water Fountain



Tunnel



**TrailLink**  
by Rails-to-Trails Conservancy

**TrailLink.com**