



2026

TrailLink Unlimited



Guides



# Brighton Park All Purpose Trail

*Ohio*



# Brighton Park All Purpose Trail

Ohio

*The Brighton Park All Purpose Trail Providing a connection between the Ohio & Erie Canal Towpath Trail and the Brookside*



The Brighton Park All Purpose Trail Providing a connection between the [Ohio & Erie Canal Towpath Trail](#) and the Brookside Reservation/Cleveland Metroparks Zoo.

Across the street from the trail's western terminus, the Brookside Reservation All Purpose Trail curves around Cleveland Metroparks Zoo and winds through the Brookside Reservation (3900 John Nagy Blvd, Cleveland).



# Brighton Park All Purpose Trail

Ohio

**States:** Ohio

**Counties:** Cuyahoga

Length: 0.4miles

**Trail end points:** Pearl Rd & Henninger Rd to  
West 21st St & Fergus Ave (Cleveland)

**Trail surfaces:** Asphalt, Concrete

**Trail category:** Greenway/Non-RT

**Trail activities:** Bike, Inline

Skating, Walking, Wheelchair Accessible

## Parking & Trail Access

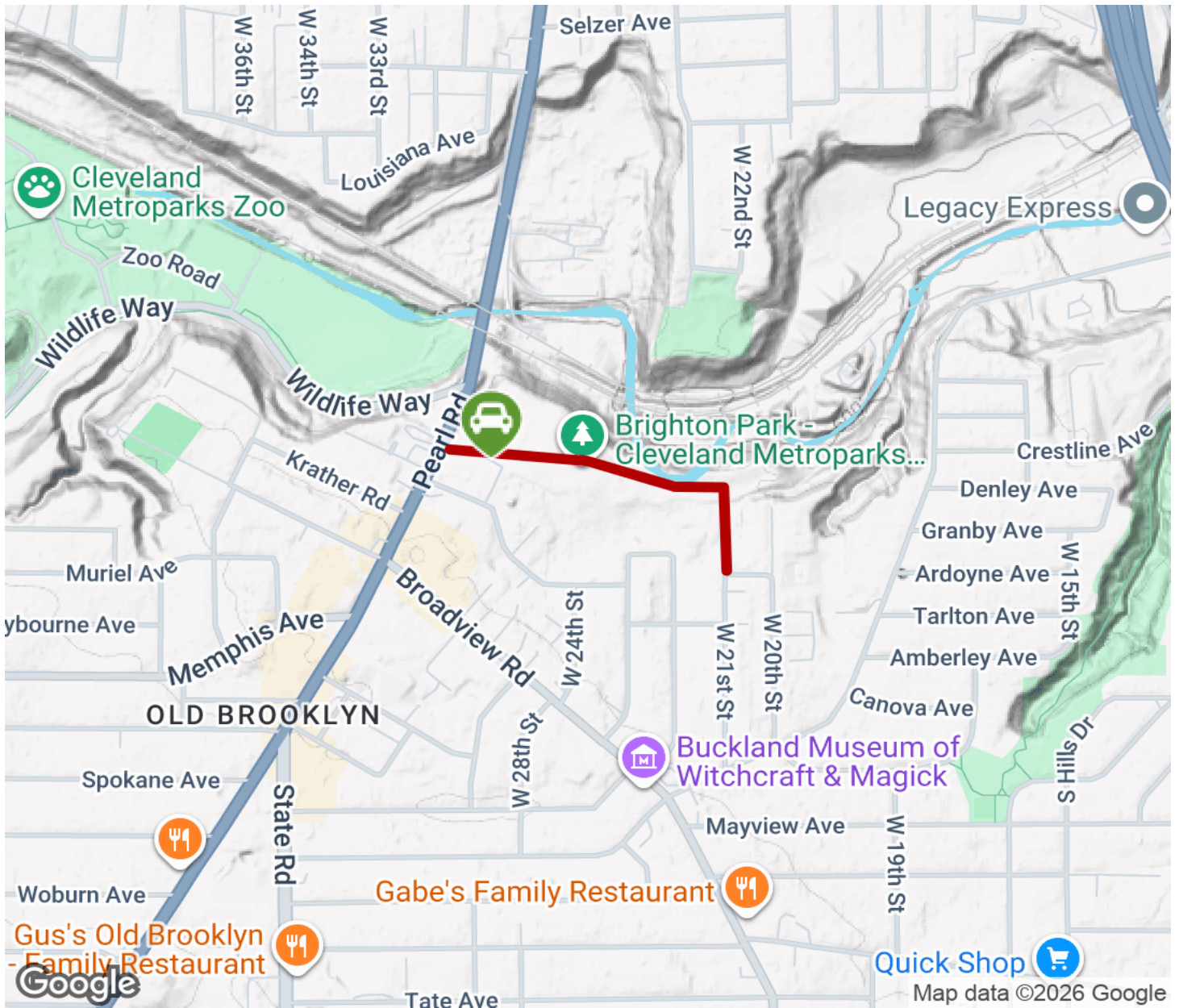
Cleveland's regional transit system provides access to the trail via several bus stops along the streets surrounding the zoo and the reservation. Visit the [RTA website](#) for more information.

Visit the [TrailLink map](#) for detailed directions.



# Brighton Park All Purpose Trail

Ohio



Trailhead



Restroom



Parking



Water Fountain



Tunnel



**TrailLink**  
by Rails-to-Trails Conservancy

**TrailLink.com**