



2026

TrailLink Unlimited



Guides



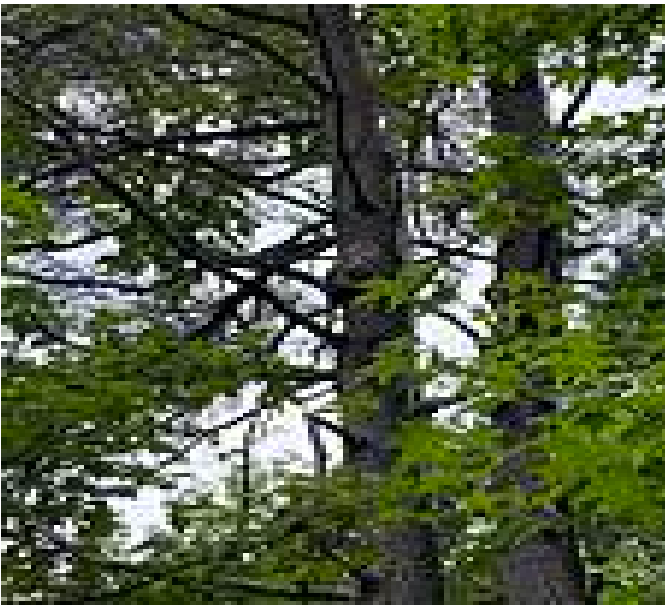
**Mallard
Creek
Greenway**
North Carolina



Mallard Creek Greenway

North Carolina

The Mallard Creek Greenway is a scenic multiuse trail located in Mecklenburg County and winds its way through lush woodlands,



The Mallard Creek Greenway is a scenic multiuse trail located in Mecklenburg County and winds its way through lush woodlands, alongside picturesque creeks, and through peaceful residential neighborhoods. The greenway parallels Mallard Creek for the majority of its route and connects to the [Clark's Creek Greenway](#)—forming a continuous 7.4-mile route.

The Mallard Creek Greenway is a popular destination for locals and visitors alike. The trail is accessible for walkers, runners, bicyclists, and those using mobility devices. The western and eastern sections are wide and paved (5.9 miles), while the middle section of the route has a gravel surface as it winds through University Research Park (1.2 miles). There are several access points and parking areas along the trail, as well as benches and picnic tables for

those who want to take a break and enjoy the scenery.

The eastern end of the trail (201 E Mallard Creek Church Rd) is accessible from Kirk Farm Park (210 E Mallard Creek Church Rd). Meandering west through a floodplain forest, the greenway connects to the [Toby Creek Greenway](#), which heads south 2.64 miles to W Rocky River Road and provides a link to the University City South neighborhood—home to the UNCC Botanical Gardens and the University of North Carolina's Charlotte campus.

Continuing through University Research Park, the trail connects to the Clark's Creek Greenway at the junction between Mallard Creek and Clark's Creek. The Clark's Creek Greenway meanders its way north, paralleling its namesake.

Curving slightly southwest, Mallard Creek Greenway continues to meander alongside Mallard Creek with numerous access points to the surrounding neighborhoods. Along the way, visitors can enjoy a variety of natural features, including tranquil ponds, wetlands, and wildlife habitats. The trail's western end is at 3500 Amaranthus Court, Charlotte.

Along the way, visitors can enjoy a variety of natural features, including tranquil ponds, wetlands, and wildlife habitats.

The greenway is maintained by Mecklenburg County Parks and Recreation Department, and there are plans to extend the trail even further in the future, connecting it with other greenways in the area. Whether you're looking for a quiet stroll in nature, a brisk workout, or a family outing, the Mallard Creek Greenway offers something for everyone.

The Mallard Creek Greenway is part of the Cross-Charlotte Trail, an eventual 26-mile trail being developed by Mecklenburg County and the City of Charlotte.



Mallard Creek Greenway

North Carolina

States: North Carolina

Counties: Mecklenburg

Length: 4.66miles

Trail end points: 3500 Amaranthus Ct,
Charlotte to Kirk Farm Park (201 E Mallard
Creek Church Rd, Charlotte)

Trail surfaces: Asphalt,Gravel

Trail category: Greenway/Non-RT

Trail activities: Bike,Inline

Skating,Walking,Wheelchair Accessible

Parking & Trail Access

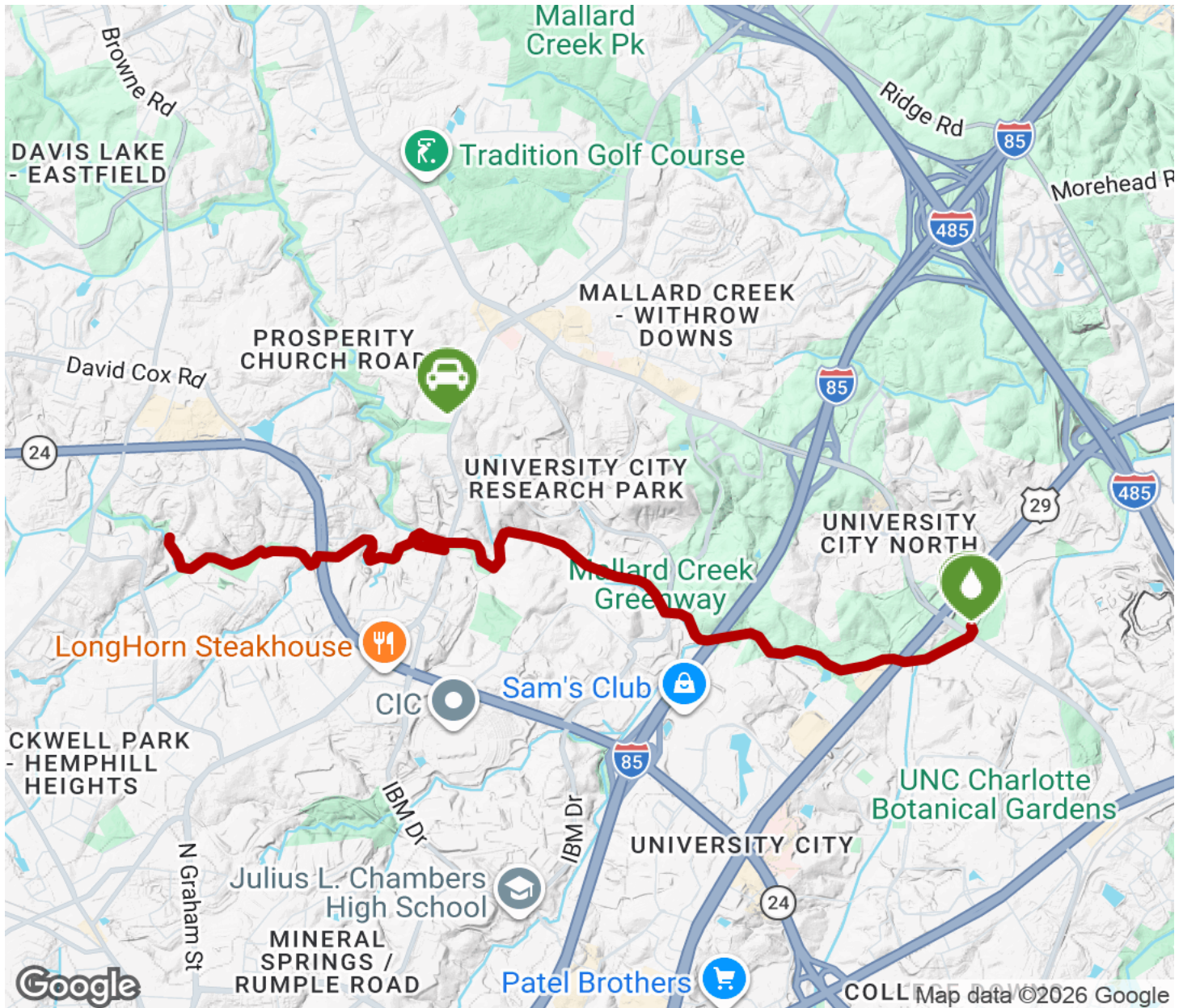
The Charlotte Area Transit System provides access to the trail. Refer to the [CATS website](#) for more information.

Parking is available at multiple points along the trail, including near Kirk Farm Park at the trail's southern parking lot (201 East Mallard Creek Church Rd, Charlotte) and at the Clark's Creek Greenway trailhead (9729 Mallard Creek Rd, Charlotte). Visit the [TrailLink map](#) for all options and detailed directions.



Mallard Creek Greenway

North Carolina



Trailhead



Restroom



Parking



Water Fountain



Tunnel



TrailLink
by Rails-to-Trails Conservancy

TrailLink.com