



2026

TrailLink Unlimited 

Guides   



**Warrenton  
Grade School  
Trail**  
*Oregon*



## Warrenton Grade School Trail

Oregon

*The Warrenton Grade School Trail follows the former railroad corridor from Warrenton Grade School north for half a mile to*



The Warrenton Grade School Trail follows the former railroad corridor from Warrenton Grade School north for half a mile to downtown Warrenton. The trail surface is dirt, grass, and crushed stone.

Providing a convenient neighborhood connection, the path passes by Quincy V. & Bessie Robinson Community Park on SW Alder Avenue. The park has a playground, a community center, a drinking fountain, restrooms, picnic tables, basketball and tennis courts, several sports fields, and parking.

For a longer adventure, head east from the trail on SW 3rd Street or SW 2nd Street for about three blocks to join the [Warrenton Waterfront Trail](#) at Skipanon River Park (99 SE 3rd St) or the canoe launch, respectively.



**TrailLink**  
by Rails-to-Trails Conservancy

**TrailLink.com**



# Warrenton Grade School Trail

Oregon

**States:** Oregon

**Counties:** Clatsop

Length: 0.5miles

**Trail end points:** SW 2nd St & SW Alder Ave to  
SW 9th St by Warrenton Grade School  
(Warrenton)

**Trail surfaces:** Crushed Stone,Dirt,Grass

**Trail category:** Rail-Trail

**Trail activities:** Bike,Mountain  
Biking,Walking

## Parking & Trail Access

Parking is available at Warrenton City Park on SW Alder Avenue.



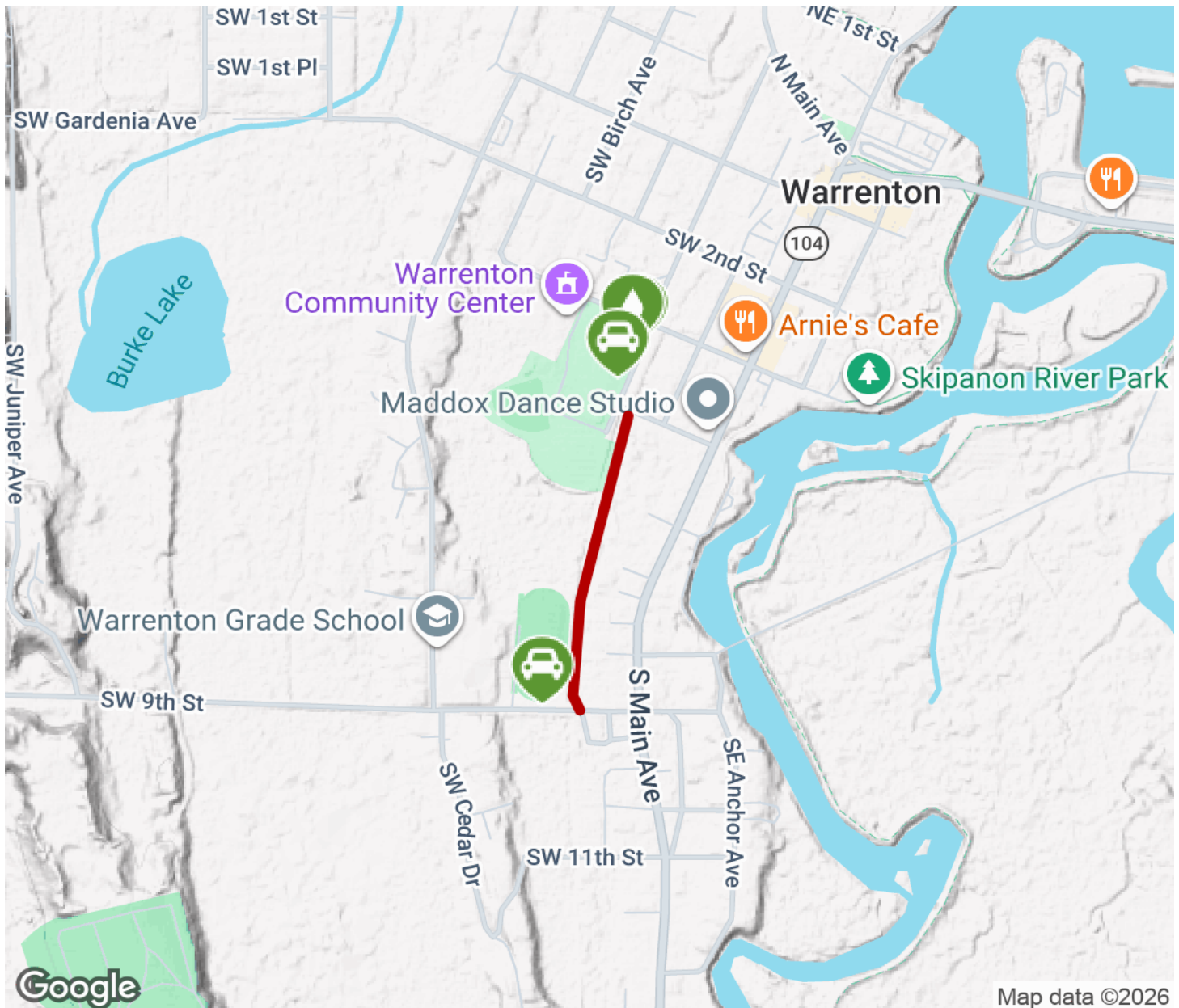
**TrailLink**  
by Rails-to-Trails Conservancy

**TrailLink.com**



# Warrenton Grade School Trail

Oregon



Map data ©2026



Trailhead



Restroom



Parking



Water Fountain



Tunnel



**TrailLink**  
by Rails-to-Trails Conservancy

**TrailLink.com**