



2026

TrailLink Unlimited



Guides



**Warrenton
Grade School
Trail**
Oregon



Warrenton Grade School Trail

Oregon

The Warrenton Grade School Trail follows the former railroad corridor from Warrenton Grade School north for half a mile to



The Warrenton Grade School Trail follows the former railroad corridor from Warrenton Grade School north for half a mile to downtown Warrenton. The trail surface is dirt, grass, and crushed stone.

Providing a convenient neighborhood connection, the path passes by Quincy V. & Bessie Robinson Community Park on SW Alder Avenue. The park has a playground, a community center, a drinking fountain, restrooms, picnic tables, basketball and tennis courts, several sports fields, and parking.

For a longer adventure, head east from the trail on SW 3rd Street or SW 2nd Street for about three blocks to join the [Warrenton Waterfront Trail](#) at Skipanon River Park (99 SE 3rd St) or the canoe launch, respectively.



Warrenton Grade School Trail

Oregon

States: Oregon

Counties: Clatsop

Length: 0.5miles

Trail end points: SW 2nd St & SW Alder Ave to
SW 9th St by Warrenton Grade School
(Warrenton)

Trail surfaces: Crushed Stone, Dirt, Grass

Trail category: Rail-Trail

Trail activities: Bike, Mountain

Biking, Walking

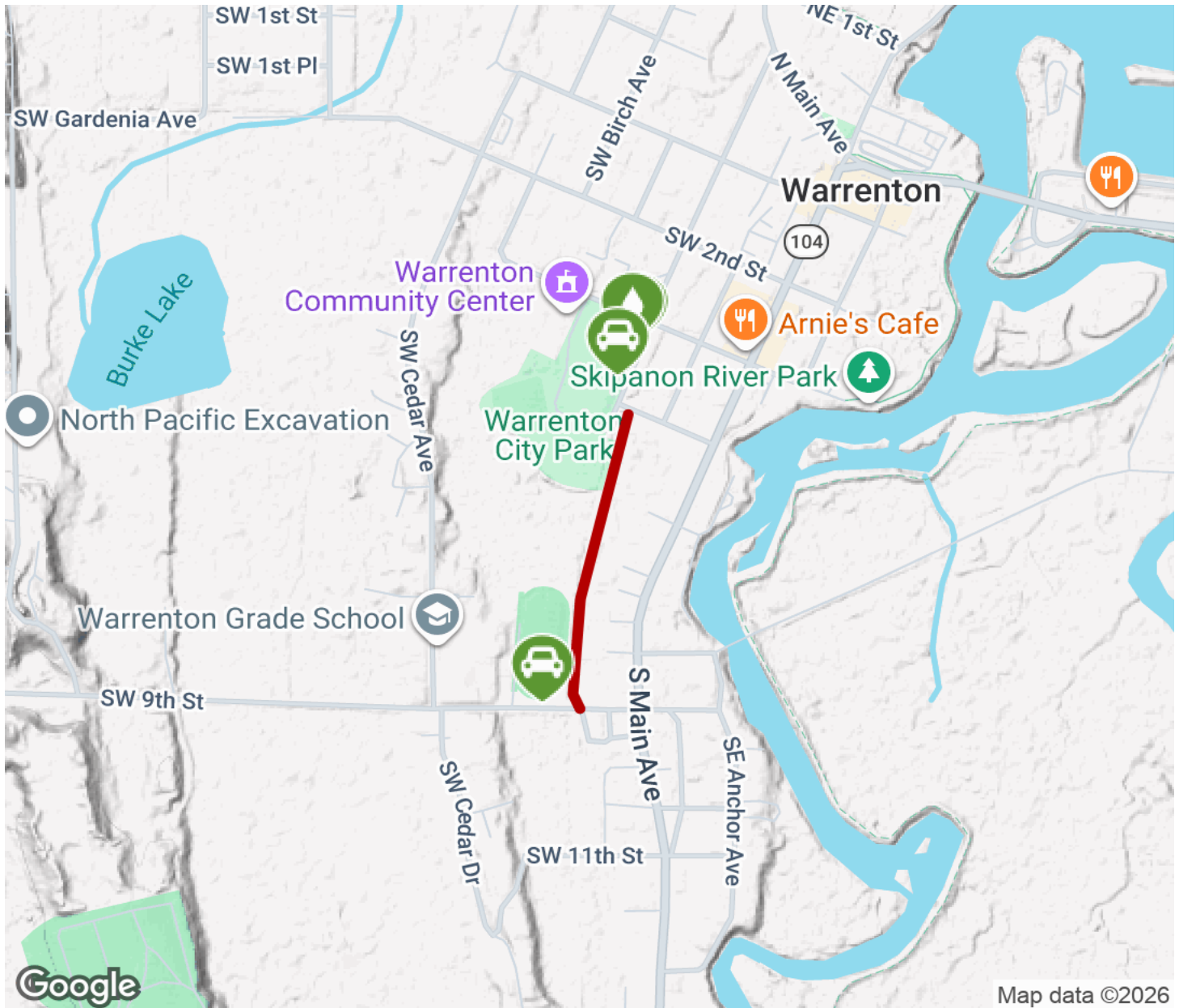
Parking & Trail Access

Parking is available at Warrenton City Park on SW Alder Avenue.



Warrenton Grade School Trail

Oregon



Trailhead



Restroom



Parking



Water Fountain



Tunnel



TrailLink
by Rails-to-Trails Conservancy

TrailLink.com