



2025

TrailLink Unlimited 

Guides



Pipeline Trail

Washington



Pipeline Trail

Washington

Overview The Pipeline Trail provides a 2.7-mile off-road route through the city of Tacoma. The trail is ADA accessible with a 12ft



The large park has a wooded canyon, upland forests, a community garden, a dog park, a variety of other trails, picnic tables, seasonal restrooms, parking and more.

The southern end of the trail is at the intersection 72nd Street and Waller Road in Waller.

The city of Tacoma and Pierce County are responsible for different sections of this trail. Long term plans include extending the trail southeast through Pierce County to Puyallup

Overview

The Pipeline Trail provides a 2.7-mile off-road route through the city of Tacoma. The trail is ADA accessible with a 12ft wide paved surface, lighting, trail signage and benches.

About the Route

The northern end of trail is on E 40th Street in Tacoma. From there, the trail heads southeast through the city--connecting neighborhoods, parks, schools, local businesses, shops, restaurants, cafes and more.

The trail parallels Pipeline Road for a majority of the route, but midway it curves through Swan Creek Park.



TrailLink
by Rails-to-Trails Conservancy

TrailLink.com



Pipeline Trail

Washington

States: Washington

Counties: Pierce

Length: 2.7miles

Trail end points: E 40th St (Tacoma) to 72nd St & Waller Rd (Waller)

Trail surfaces: Asphalt

Trail category: Greenway/Non-RT

Trail activities: Bike,Inline

Skating,Wheelchair Accessible,Walking

Parking & Trail Access

The Pipeline Trail runs between E 40th St (Tacoma) and the intersection of 72nd St & Waller Rd (Waller).

Parking is available at Swan Creek Park (E 42nd St & Roosevelt Ave, Tacoma).

Visit the [TrailLink map](#) for detailed directions.



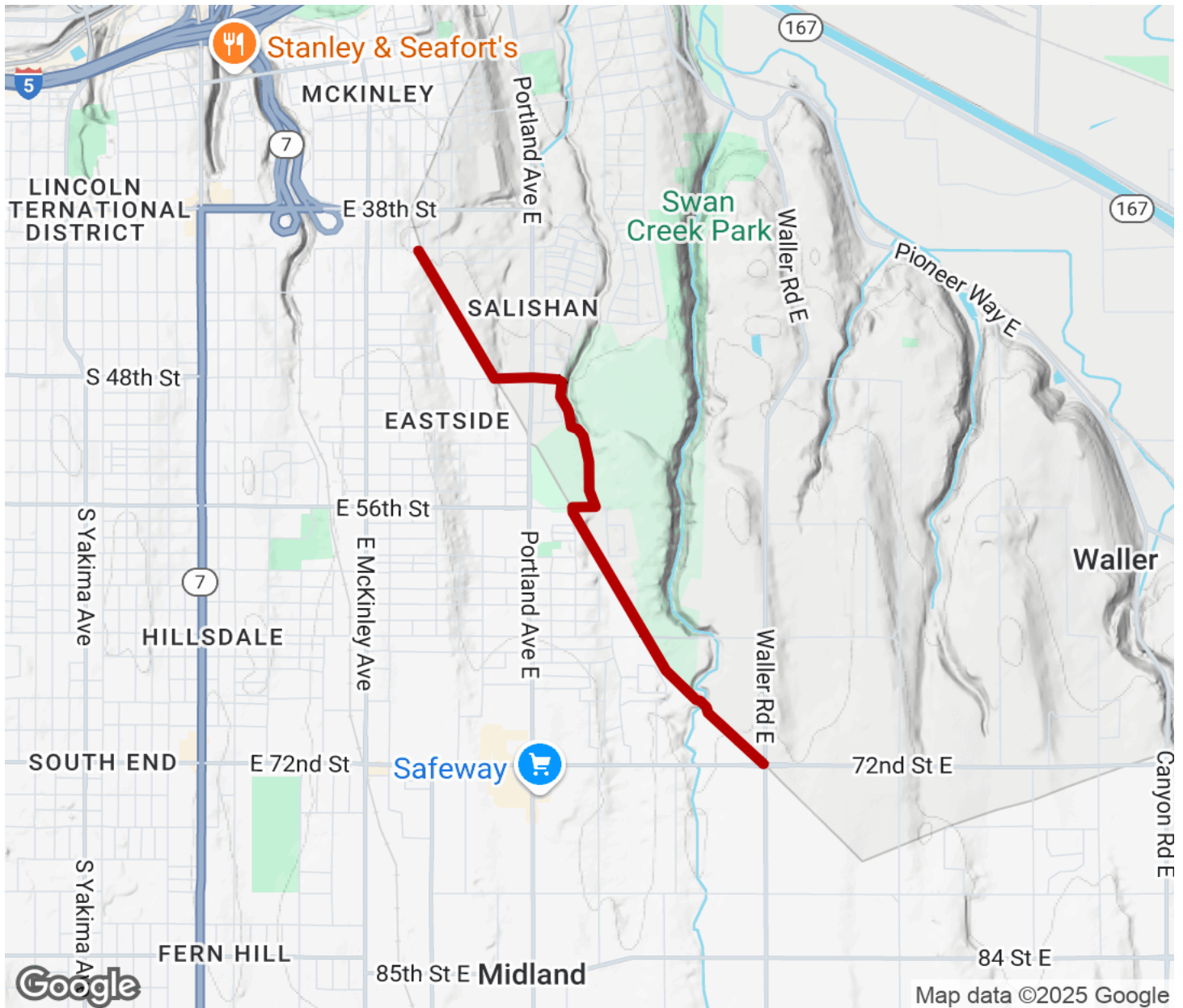
TrailLink
by Rails-to-Trails Conservancy

TrailLink.com



Pipeline Trail

Washington



Trailhead



Restroom



Parking



Water Fountain



Tunnel



TrailLink
by Rails-to-Trails Conservancy

TrailLink.com