



2025

TrailLink Unlimited 

Guides



**Allenstown
Rail Trail**
New Hampshire



Allenstown Rail Trail

New Hampshire

Overview The Allenstown Rail Trail is an out-and-back trail that leaves from Ferry St., although trail users can continue on to the



At the southern end of the trail, trail users can connect to the Hooksett Riverwalk Trail.

Overview

The Allenstown Rail Trail is an out-and-back trail that leaves from Ferry St., although trail users can continue on to the Hooksett Riverwalk Trail to reach the Hooksett Dog Park.

About the Route

The trail primarily runs through open fields alongside the Merrimack River. The Hooksett Riverwalk Trail and the Allenstown Rail Trail are separated by their managing towns but together create a pleasant trail experience.

Connections



TrailLink
by Rails-to-Trails Conservancy

TrailLink.com



Allenstown Rail Trail

New Hampshire

States: New Hampshire

Counties: Merrimack

Length: 0.7miles

Trail end points: Ferry St. (Allenstown) to
Hooksett Riverwalk Trail (Hooksett)

Trail surfaces: Crushed Stone,Dirt

Trail category: Rail-Trail

Trail activities: Bike,Walking

Parking & Trail Access

The Allenstown Rail Trail runs between Ferry St. (Allenstown) and the Hooksett Riverwalk Trail (Hooksett).

Parking is available at:

- Hooksett Dog Park, 101 Merrimack St. (Hooksett)

Please see TrailLink Map for all parking options and detailed directions.



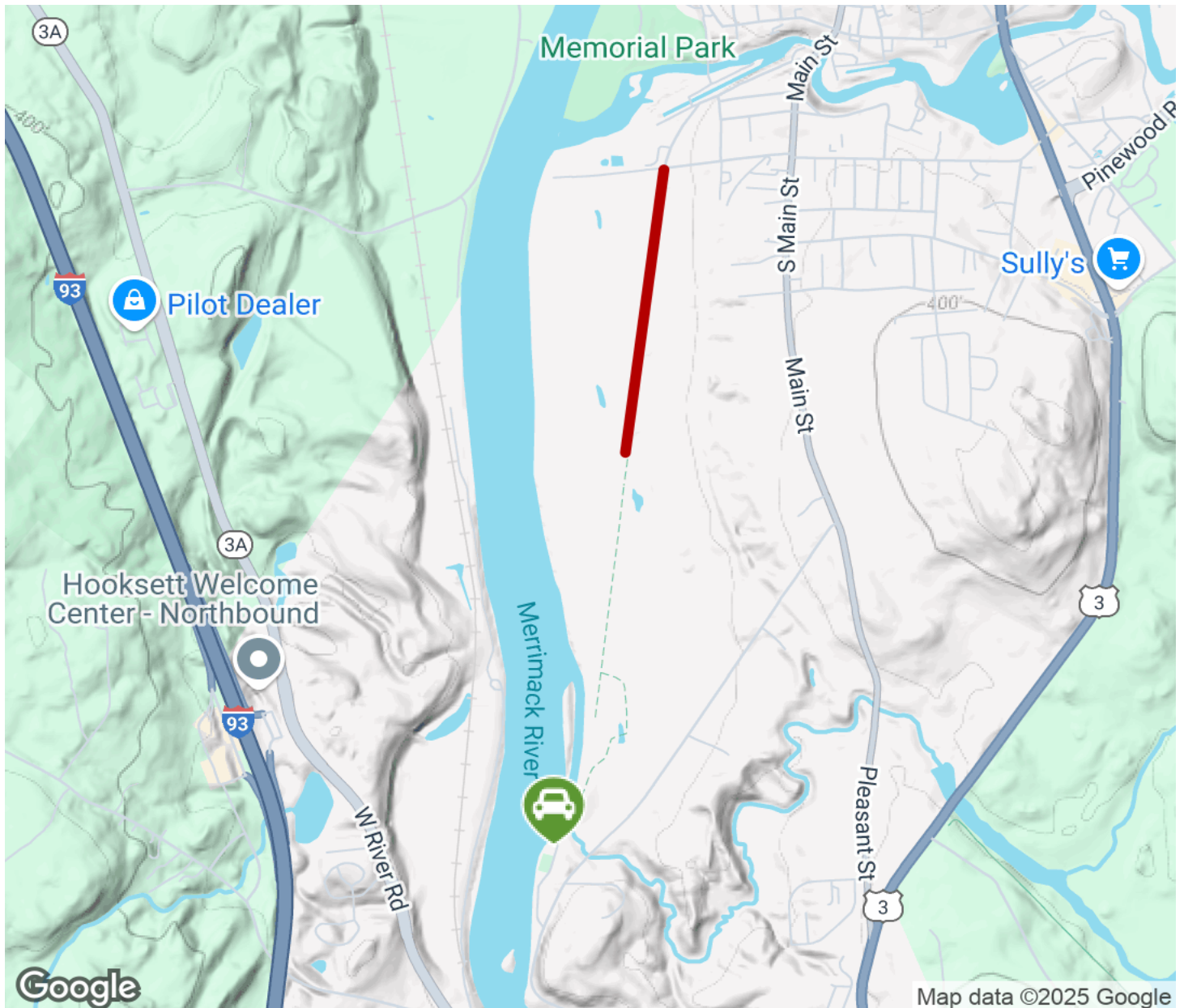
TrailLink
by Rails-to-Trails Conservancy

TrailLink.com



Allenstown Rail Trail

New Hampshire



Trailhead



Restroom



Parking



Water Fountain



Tunnel



TrailLink
by Rails-to-Trails Conservancy

TrailLink.com