



2026

TrailLink Unlimited 

Guides



**Allenstown  
Rail Trail**  
*New Hampshire*



## Allenstown Rail Trail

*New Hampshire*

*The Allenstown Rail Trail is an out-and-back trail that leaves from Ferry St., although trail users can continue on to the Hooksett*



The Allenstown Rail Trail is an out-and-back trail that leaves from Ferry St., although trail users can continue on to the Hooksett Riverwalk Trail to reach the Hooksett Dog Park.

### About the Route

The trail primarily runs through open fields alongside the Merrimack River. The Hooksett Riverwalk Trail and the Allenstown Rail Trail are separated by their managing towns but together create a pleasant trail experience.

### Connections

At the southern end of the trail, trail users can connect to the Hooksett Riverwalk Trail.



# Allenstown Rail Trail

*New Hampshire*

**States:** New Hampshire

**Counties:** Merrimack

Length: 0.7miles

**Trail end points:** Ferry St. (Allenstown) to  
Hooksett Riverwalk Trail (Hooksett)

**Trail surfaces:** Crushed Stone,Dirt

**Trail category:** Rail-Trail

**Trail activities:** Bike,Walking

## Parking & Trail Access

The Allenstown Rail Trail runs between Ferry St. (Allenstown) and the Hooksett Riverwalk Trail (Hooksett).

Parking is available at:

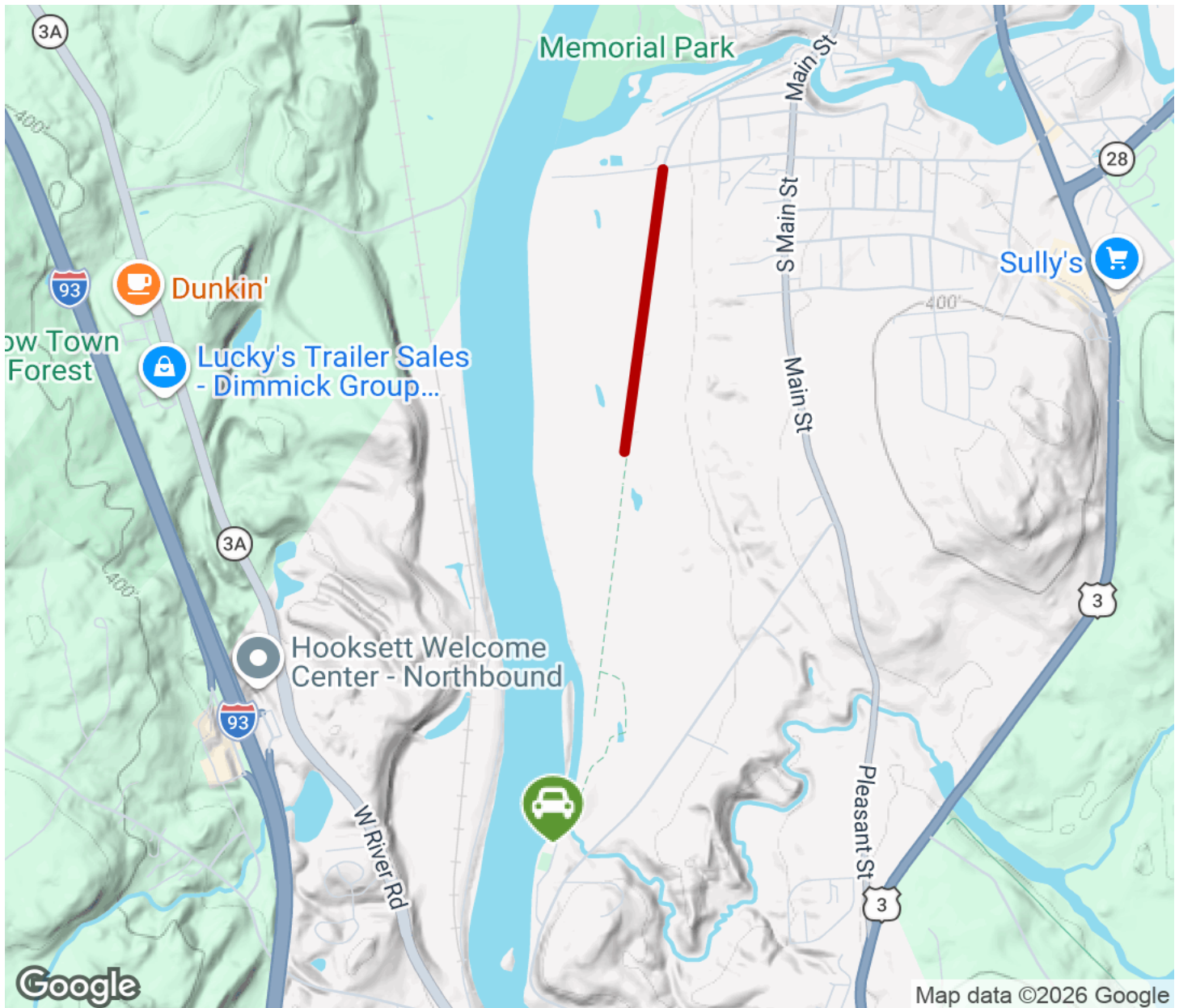
- Hooksett Dog Park, 101 Merrimack St. (Hooksett)

Please see TrailLink Map for all parking options and detailed directions.



# Allenstown Rail Trail

New Hampshire



Trailhead



Restroom



Parking



Water Fountain



Tunnel



**TrailLink**  
by Rails-to-Trails Conservancy

**TrailLink.com**