



2026

TrailLink Unlimited



Guides



**Wilberforce
Switch Trail**
Ohio



Wilberforce Switch Trail

Ohio

The Wilberforce Switch Trail is a 0.9-mile connector trail that connects Central State University students and other trail users to a



to-Erie Trail and the Great American Rail Trail.

The Wilberforce Switch Trail is a 0.9-mile connector trail that connects Central State University students and other trail users to a larger trail network.

About the Route

Though short, the Wilberforce Switch Trail connects to important historic sites including Central State University, The National Afro-American Museum and Cultural Center, and the Charles Young Buffalo Soldiers National Monument.

Connections

The eastern end of the Wilberforce Switch Trail connects to the Prairie Grass Trail, which is part of both the Ohio-



Wilberforce Switch Trail

Ohio

States: Ohio

Counties: Greene

Length: 0.9miles

Trail end points: Prairie Grass Trail (Xenia) to
Campus Dr. (Xenia)

Trail surfaces: Asphalt

Trail category: Rail-Trail

Trail activities: Bike, Inline

Skating, Walking, Wheelchair Accessible

Parking & Trail Access

The Wilberforce Switch Trail runs between the Prairie Grass Trail (Xenia) and Campus Dr. (Xenia).

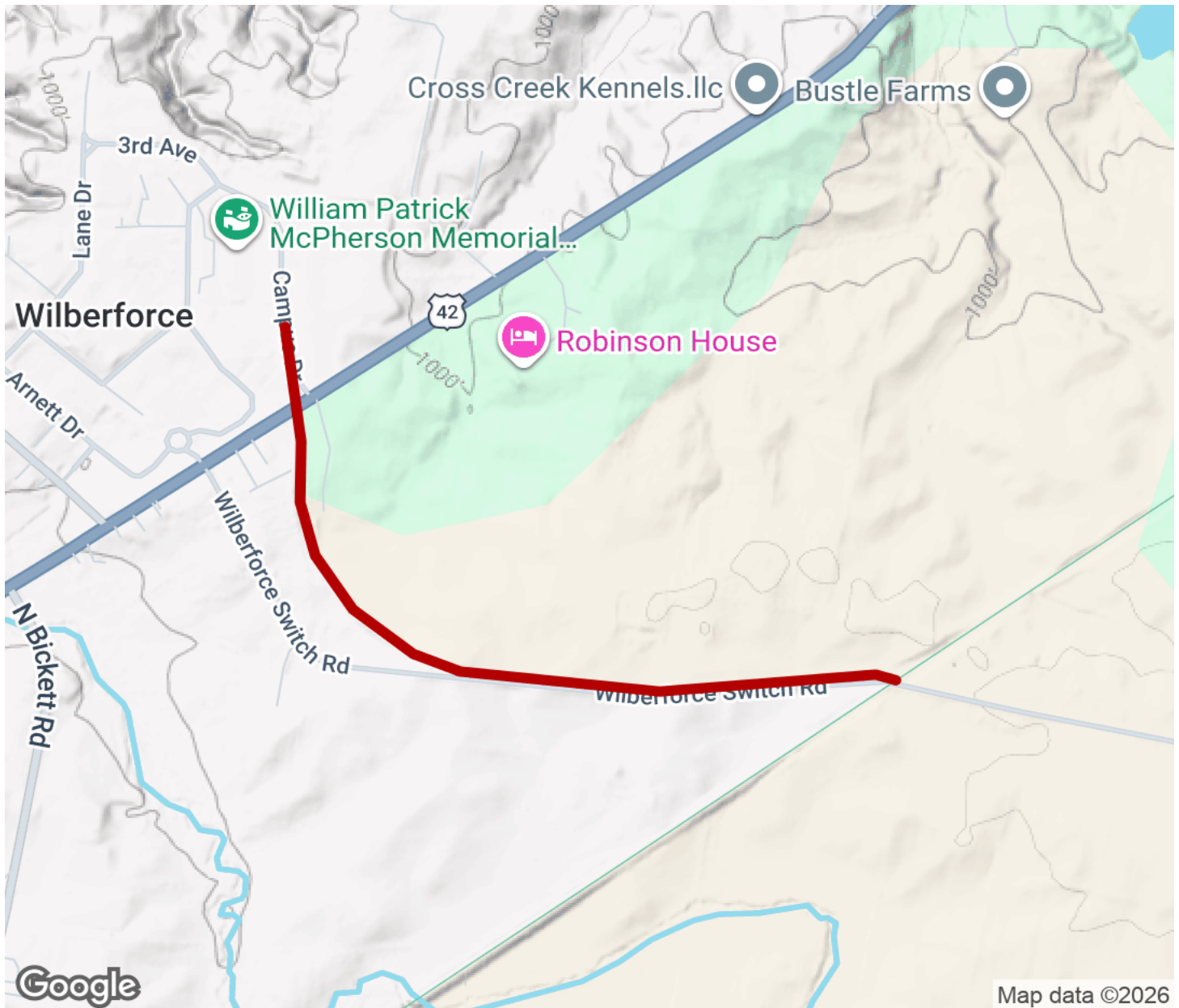
Parking is available further south along the Prairie Grass Trail at Xenia Station, 90922 S Detroit St (Xenia).

Please see TrailLink Map for detailed directions.



Wilberforce Switch Trail

Ohio



Trailhead



Restroom



Parking



Water Fountain



Tunnel



TrailLink
by Rails-to-Trails Conservancy

TrailLink.com