



2026

TrailLink Unlimited 

Guides



## Cowboy Trail Connector

*Nebraska*



## Cowboy Trail Connector

Nebraska

*The Cowboy Trail Connector runs 1.2 miles through Chadron, Nebraska. The rail-trail is slated to eventually connect to the*



The Cowboy Trail Connector runs 1.2 miles through Chadron, Nebraska. The rail-trail is slated to eventually connect to the nearby [Cowboy Recreation and Nature Trail](#), hence its namesake. The trail is a rail-with-trail as well, meaning it follows an active rail line. The surface is crushed limestone.



**TrailLink**  
by Rails-to-Trails Conservancy

**TrailLink.com**



# Cowboy Trail Connector

Nebraska

**States:** Nebraska

**Counties:** Dawes

Length: 1.2miles

**Trail end points:** Chadron to Chadron

**Trail surfaces:** Crushed Stone

**Trail category:** Rail-Trail

**Trail activities:** Bike, Walking

## Parking & Trail Access

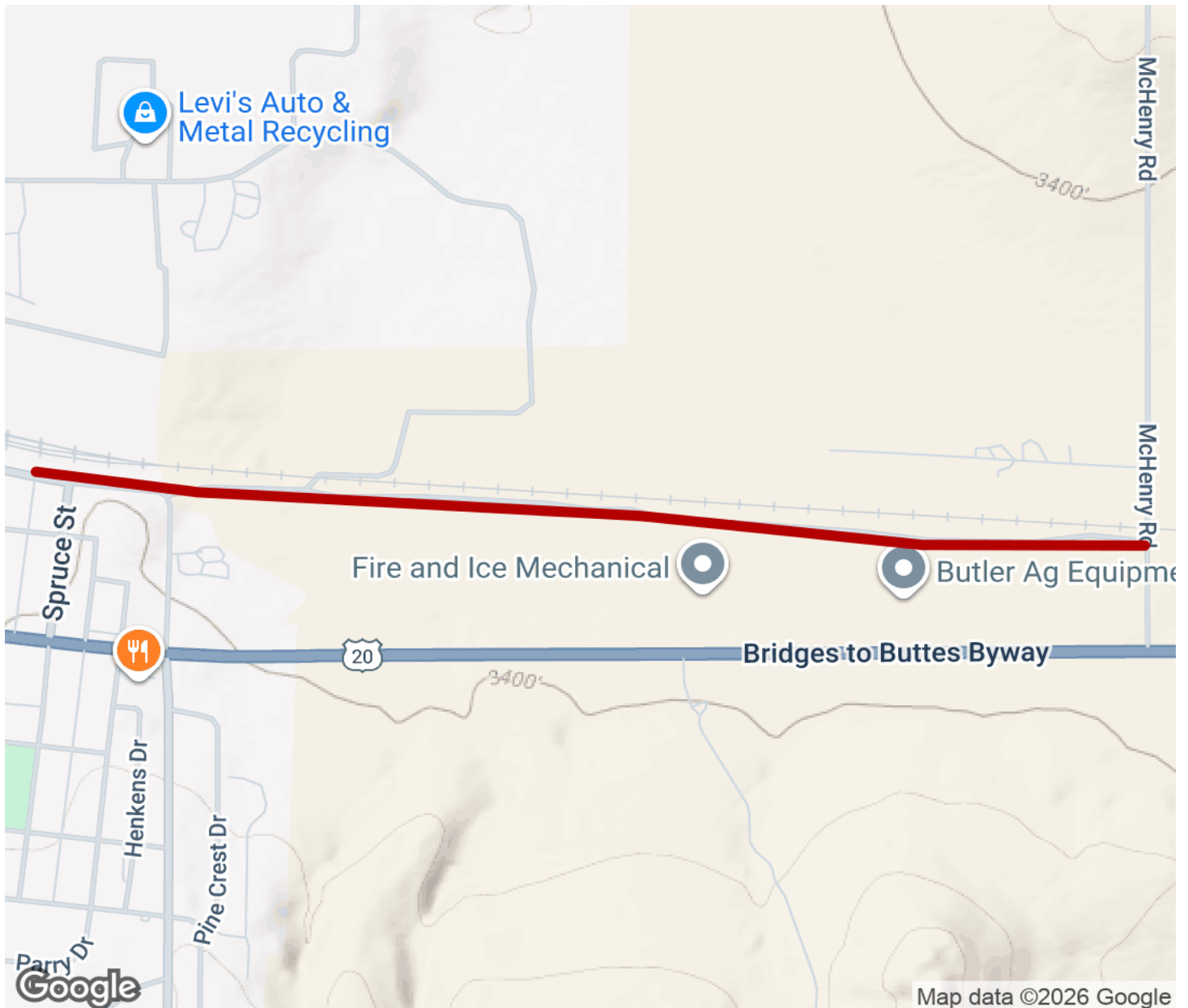
There is no designated parking available for this trail.

Please see TrailLink Map for detailed directions.



# Cowboy Trail Connector

Nebraska



Trailhead



Restroom



Parking



Water Fountain



Tunnel



**TrailLink**  
by Rails-to-Trails Conservancy

**TrailLink.com**