



2026

TrailLink Unlimited



Guides



Fillmore Bike Path
California



Fillmore Bike Path

California

The Fillmore Bike Path consists of two distinct but connected trails, each offering its own unique experience for trail users. Both



was acquired from major Hollywood studios. Keep an eye out for active film shoots, as the railroad is commonly used in movie and television productions.

From the rail-with-trail's western end, a more rustic experience awaits on the continuation of the Fillmore Bike Path along Sespe Creek. Head south along the oft dry waterway to reach Fillmore's new water recycling plant, or head north under Old Telegraph Road and the active rail line to access neighborhoods off Goodenough Road. From any point on the creek-side trail, enjoy stunning views of the surrounding Topatopa Mountains.

The Fillmore Bike Path consists of two distinct but connected trails, each offering its own unique experience for trail users. Both portions are paved and well-maintained, making the entirety of the Fillmore Bike Path a useful recreation and transportation corridor for residents of and visitors to the small Ventura County city.

A significant piece of the Fillmore Bike Path is a rail-with-trail immediately paralleling the Fillmore and Western Railway through the city's downtown. The tourist railroad offers a number of different rides, including themed trains, scenic excursions and dinner trains, all from their base in Fillmore. Even those not riding the railroad will appreciate its presence next to the trail: the Fillmore and Western Railway is known as the home of the "Movie Trains," since the majority of their historic rolling stock



Fillmore Bike Path

California

States: California

Counties: Ventura

Length: 3.8miles

Trail end points: Main St. east of Mountain
View St. to River St.; Goodenough Rd.

Trail surfaces: Asphalt, Concrete

Trail category: Rail-Trail

Trail activities: Bike, Inline

Skating, Walking, Wheelchair Accessible

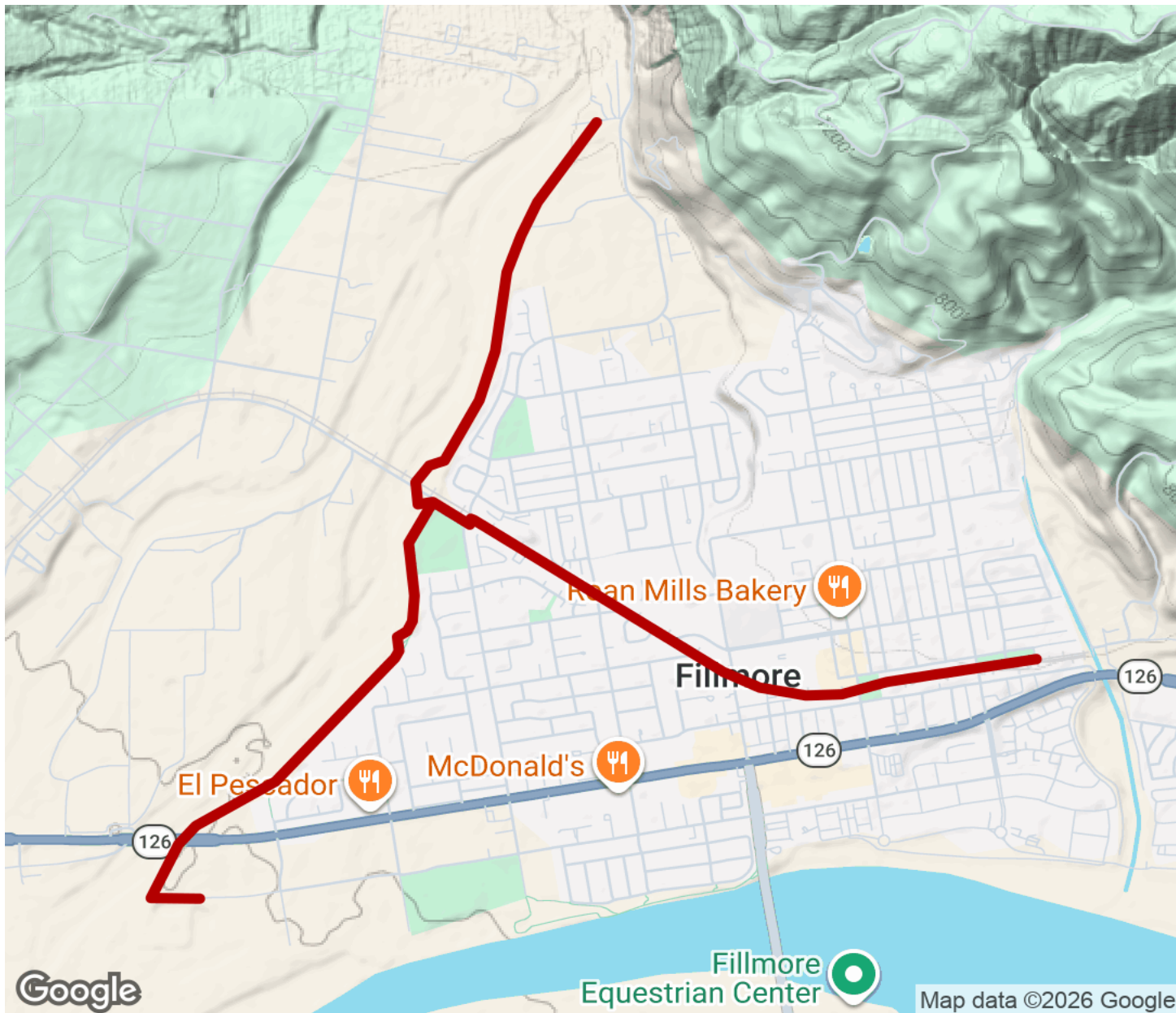
Parking & Trail Access

Ample parking for the Fillmore Bike Path is available at Shiells Park on C Street in Fillmore. Additional parking can be found at a designated lot for Central Park on Main Street in downtown Fillmore.



Fillmore Bike Path

California



Trailhead



Restroom



Parking



Water Fountain



Tunnel



TrailLink
by Rails-to-Trails Conservancy

TrailLink.com