



2025

TrailLink Unlimited 

Guides



**Mill Valley/
Sausalito
Multiuse
Pathway**
California



Mill Valley/Sausalito Multiuse Pathway

California

Overview The Mill Valley/Sausalito Multiuse Pathway is a 3.7-mile convenient connection between neighborhoods, schools, shopping,



Although the trail is rather short, it and the nearby shoreline and art galleries are all worth exploring. The best feature of the trail is its views of the bay, where it passes through a scenic wetland marsh. Trail users will be able to spot many species of birds here, including the marsh wren, brown pelican, and maybe even a raptor, if you are lucky. Be sure to enjoy the houseboats of Sausalito as the trail cruises by the harbor. Parking is available at many of the adjoining business areas and at Sycamore Avenue. The trailhead has a public restroom.

Connections

The trail connects to the [Charles F. McGlashan Pathway](#) at Coyote Creek.

Most of the Mill Valley/Sausalito Multiuse Pathway is also a component of the 300+ mile [San Francisco Bay Trail](#), and you will see signs advertising the trail as such.

Overview

The Mill Valley/Sausalito Multiuse Pathway is a 3.7-mile convenient connection between neighborhoods, schools, shopping, restaurants, and both a skate and dog park. The trail is paved with a few wooden bridges over marshlands and inlets. There is also a gravel shoulder that is used by equestrians.

About the Route

Overall, the trail gets a good mix of cyclists, walkers, joggers, and skaters, so brush up on the rules of the trail before beginning. You can also access the trail by way of the ferry in Sausalito, making it possible to connect with other opportunities in San Francisco and Marin County.



Mill Valley/Sausalito Multiuse Pathway

California

States: California

Counties: Marin

Length: 3.7miles

Trail end points: 0.2 mile north of Vasco Ct & Underhill Rd (Mill Valley) to Harbor Dr. (Sausalito)

Trail surfaces: Asphalt

Trail category: Rail-Trail

Trail activities: Bike,Inline

Skating,Wheelchair Accessible,Horseback Riding,Walking

Parking & Trail Access

The Mill Valley/Sausalito Multiuse Pathway runs between 0.2 miles north of Vasco Ct & Underhill Rd (Mill Valley) and Harbor Dr. (Sausalito).

Parking is available at:

- 180 Camino Alto (Mill Valley)
- 448 Sycamore Ave (Mill Valley)

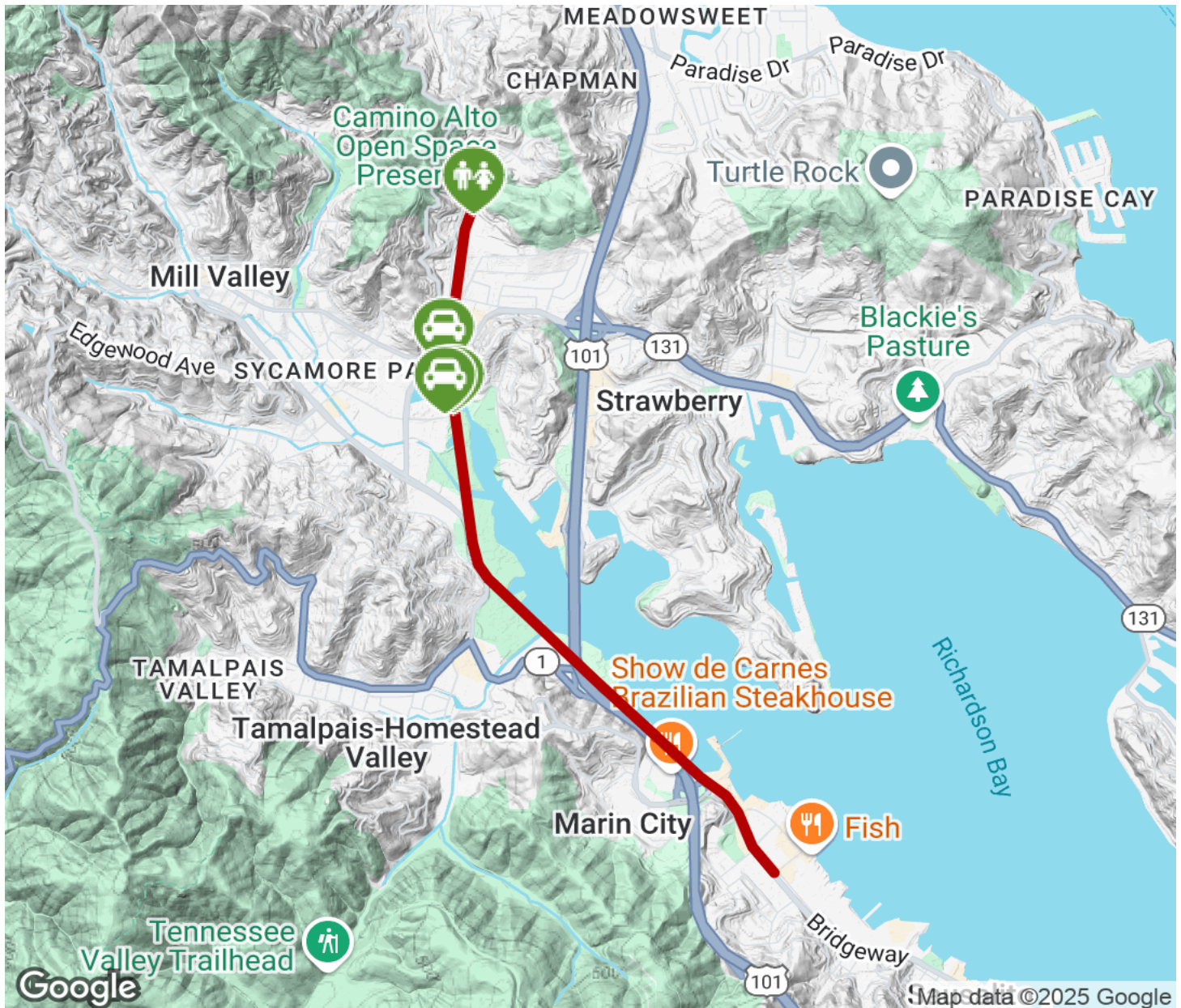
Parking is available at the Mill Valley Community Center (180 Camino Alto) and at Bayfront Park (499 Sycamore Ave).

See [TrailLink map](#) for all parking options and detailed directions.



Mill Valley/Sausalito Multiuse Pathway

California



Trailhead



Restroom



Parking



Water Fountain



Tunnel



TrailLink
by Rails-to-Trails Conservancy

TrailLink.com