



2025

TrailLink Unlimited 

Guides



Lamoni Rail-Trail

Iowa



Lamoni Rail-Trail

Iowa

The Lamoni Rail-Trail, also called the Lamoni Recreation Trail, is a delightful route through the downtown area, with a side loop



The Lamoni Rail-Trail, also called the Lamoni Recreation Trail, is a delightful route through the downtown area, with a side loop through the campus of Graceland University. You can begin the trail at the Iowa Gateway Welcome Center (Exit 4 on I-35), which makes a nice break if you need to stretch those legs during a long drive. From here, the trail heads west to downtown Lamoni then continues north and west into the countryside, past small lakes and open fields, to end at Liberty Hall. Liberty Hall is a Victorian-era house open for public viewing and listed on the National Register of Historic Places.

The Lamoni Rail-Trail follows an abandoned railroad corridor and incorporates an earthen dam plus two reconstructed trestles.



TrailLink
by Rails-to-Trails Conservancy

TrailLink.com



Lamoni Rail-Trail

Iowa

States: Iowa

Counties: Decatur

Length: 4.7miles

Trail end points: Welcome Center on I-35 at
US 69 to Libery Hall on W. Main St. near
Fayette Rd. (Lamoni)

Trail surfaces: Asphalt

Trail category: Rail-Trail

Trail activities: Bike,Inline

Skating,Walking,Wheelchair Accessible,Cross
Country Skiing

Parking & Trail Access

Park at the Iowa Gateway Welcome Center (Exit 4 on I-35), at Central Park (behind the library off Main St./US 69) or at Liberty Hall (1138 W Main St.). Parking is available on the campus of Graceland University but restrictions may apply.



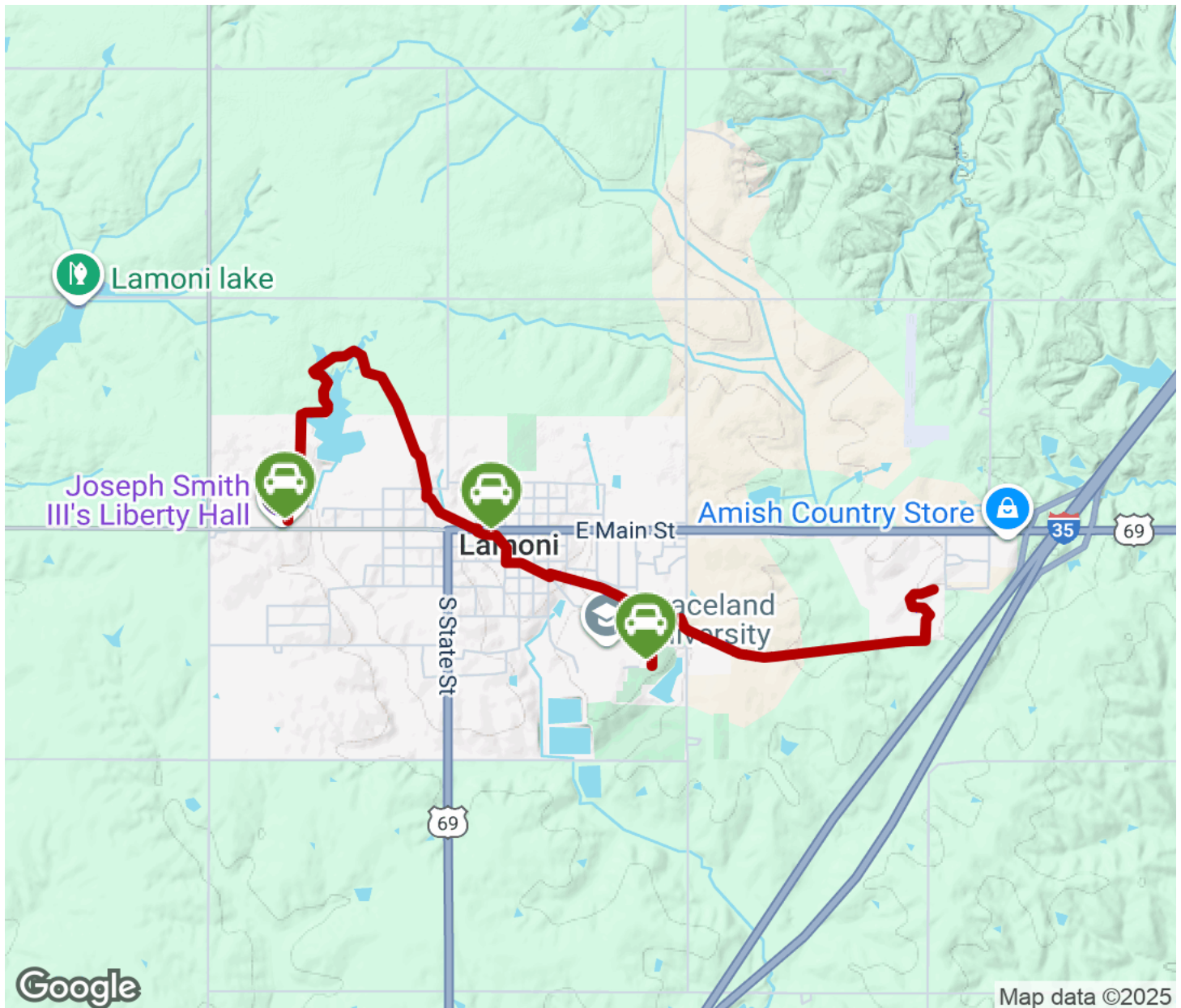
TrailLink
by Rails-to-Trails Conservancy

TrailLink.com



Lamoni Rail-Trail

Iowa



Trailhead



Restroom



Parking



Water Fountain



Tunnel



TrailLink
by Rails-to-Trails Conservancy

TrailLink.com