



2025

TrailLink Unlimited 

Guides   



## Russell White Nature Trail

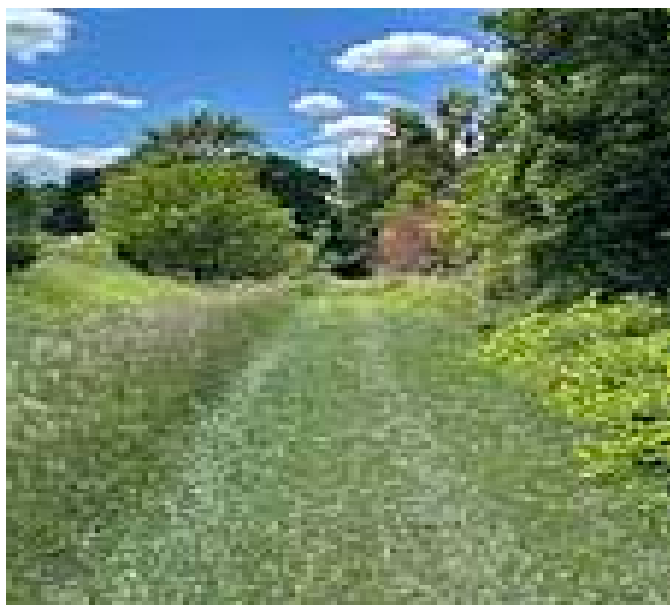
*Iowa*



## Russell White Nature Trail

Iowa

*The Russell White Nature Trail runs for nearly 4 miles through a landscape of forest, pasture and prairie and links the tiny*



The Russell White Nature Trail runs for nearly 4 miles through a landscape of forest, pasture and prairie and links the tiny community of Lanesboro with open space to the southwest of the town. The trail occupies part of a railroad corridor built by the Chicago Great Western Railway in 1902. Evidence of the trail's railroad history can be seen in Lanesboro, where an old brick train depot is still standing.

The trail crosses the Raccoon River via a 350 foot long trestle that has been converted for recreational use. The river and dense tree cover make the trail a popular spot for bird watchers—be sure to bring your keen eyes and a camera, and you might see an owl staring back at you through the trees!



**TrailLink**  
by Rails-to-Trails Conservancy

**TrailLink.com**



# Russell White Nature Trail

*Iowa*

**States:** Iowa

**Counties:** Carroll

Length: 3.8miles

**Trail end points:** Timber Ave. north of 140th St.  
to 120th St. and 4th St.

**Trail surfaces:** Ballast,Grass

**Trail category:** Rail-Trail

**Trail activities:** Fishing,Horseback

Riding,Mountain

Biking,Snowmobiling,Walking,Cross Country

Skiing

## Parking & Trail Access

In Lanesboro, access the Russell White Nature Trail at the intersection of 4th Street and 120th Street. You can also pick up the trail farther southwest where it intersects Union Avenue or 130th Street. Parking is available in a small dirt lot at the western trailhead on Timber Avenue.



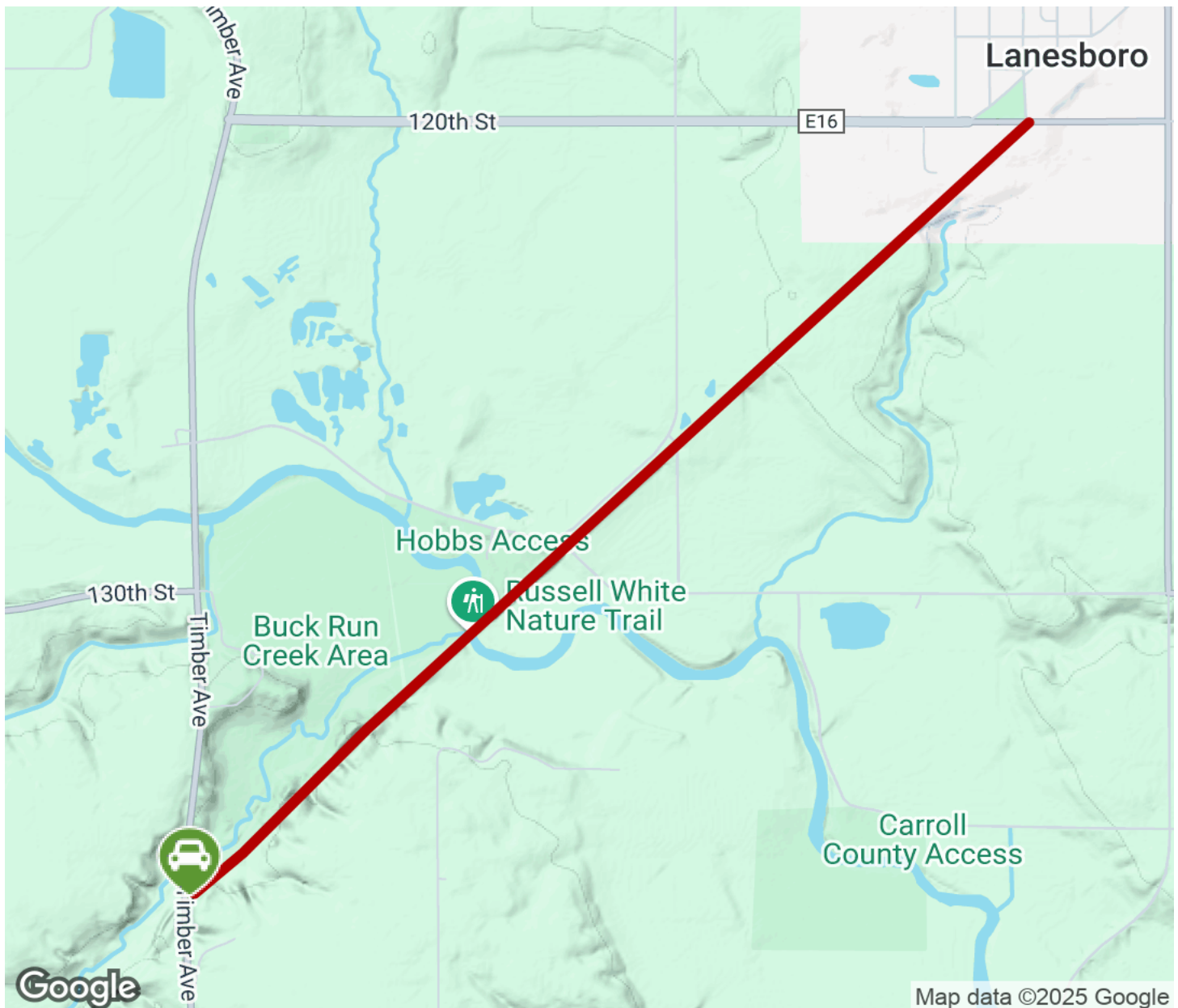
**TrailLink**  
by Rails-to-Trails Conservancy

**TrailLink.com**



# Russell White Nature Trail

Iowa



Trailhead



Restroom



Parking



Water Fountain



Tunnel



**TrailLink**  
by Rails-to-Trails Conservancy

**TrailLink.com**