



2025

TrailLink Unlimited 

Guides   



Russell White Nature Trail

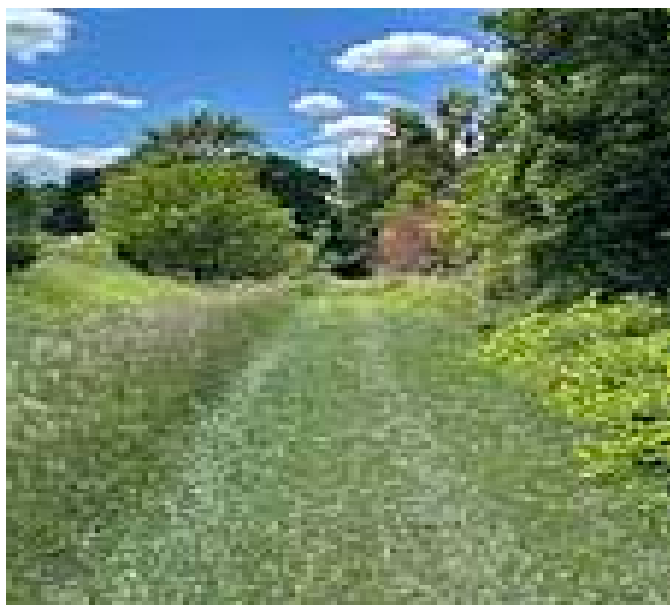
Iowa



Russell White Nature Trail

Iowa

The Russell White Nature Trail runs for nearly 4 miles through a landscape of forest, pasture and prairie and links the tiny



The Russell White Nature Trail runs for nearly 4 miles through a landscape of forest, pasture and prairie and links the tiny community of Lanesboro with open space to the southwest of the town. The trail occupies part of a railroad corridor built by the Chicago Great Western Railway in 1902. Evidence of the trail's railroad history can be seen in Lanesboro, where an old brick train depot is still standing.

The trail crosses the Raccoon River via a 350 foot long trestle that has been converted for recreational use. The river and dense tree cover make the trail a popular spot for bird watchers—be sure to bring your keen eyes and a camera, and you might see an owl staring back at you through the trees!



TrailLink
by Rails-to-Trails Conservancy

TrailLink.com



Russell White Nature Trail

Iowa

States: Iowa

Counties: Carroll

Length: 3.8miles

Trail end points: IA-286 to Timber Ave.

Trail surfaces: Ballast,Grass

Trail category: Rail-Trail

Trail activities: Fishing,Horseback

Riding,Mountain

Biking,Snowmobiling,Walking,Cross Country

Skiing

Parking & Trail Access

In Lanesboro, access the Russell White Nature Trail at the intersection of 4th Street and 120th Street. Trail users can also pick up the trail farther southwest where it intersects Union Avenue or 130th Street. Parking is available in a small dirt lot at the western trailhead on Timber Avenue.



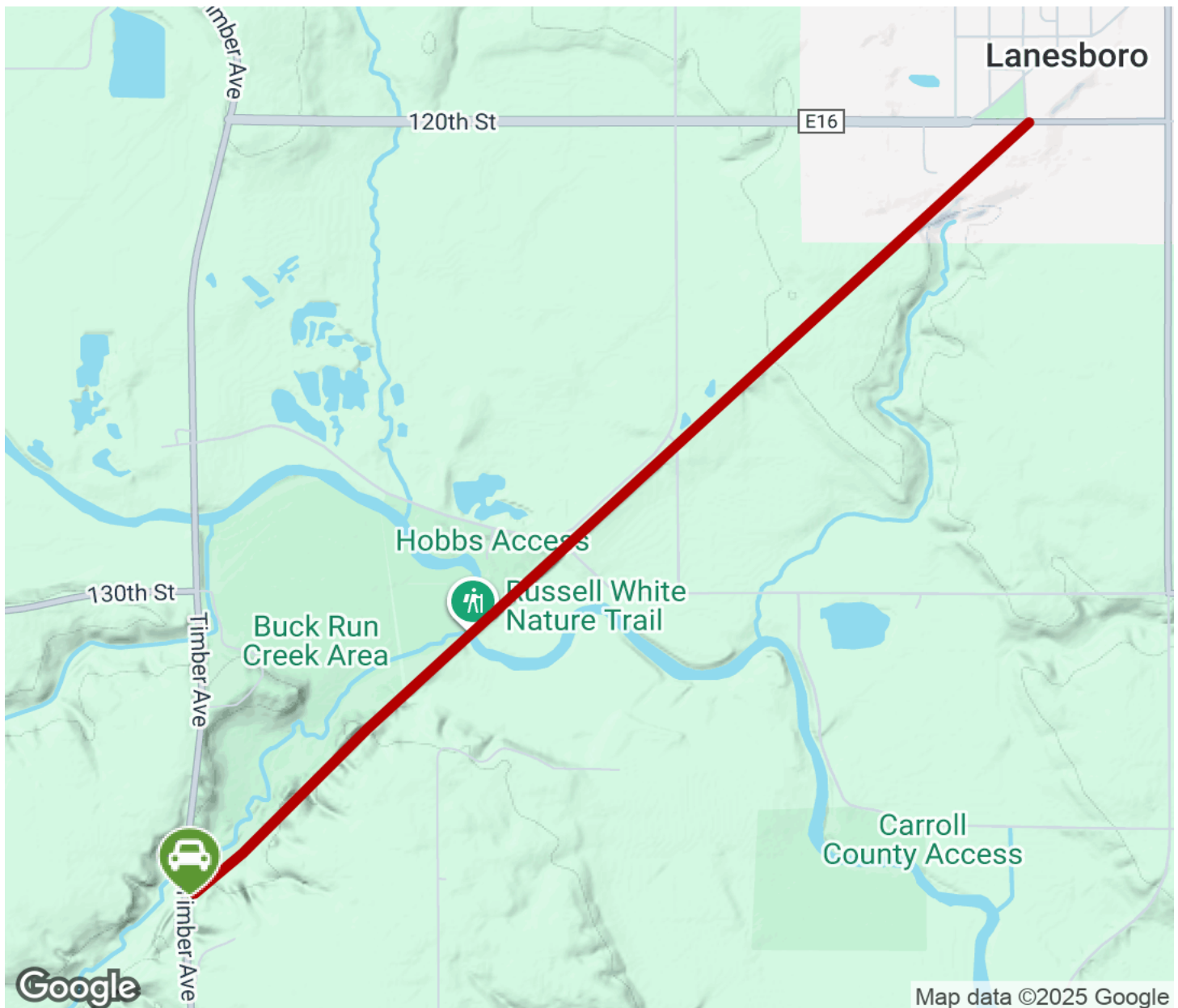
TrailLink
by Rails-to-Trails Conservancy

TrailLink.com



Russell White Nature Trail

Iowa



Trailhead



Restroom



Parking



Water Fountain



Tunnel



TrailLink
by Rails-to-Trails Conservancy

TrailLink.com