



2025

TrailLink Unlimited 

Guides



**Wabash & Erie
Canal Trail
(Evansville)**
Indiana



Wabash & Erie Canal Trail (Evansville)

Indiana

Evansville's Wabash & Erie Canal Trail travels through a dense hardwood forest in Wesselman Park, next to the Wesselman Woods



obstacles to step over. The path is not mowed and little is done to clear plant encroachment on all sides.

Evansville's Wabash & Erie Canal Trail travels through a dense hardwood forest in Wesselman Park, next to the Wesselman Woods Nature Preserve, a 200-acre National Natural Landmark and State Nature Preserve. Some of the park's trees are hundreds of years old and the area is abundant with wildlife, including gray foxes, coyote, whitetail deer, woodpeckers and owls. Visit the Preserve's Nature Center to learn more about the unique surroundings.

Running 460 miles from Evansville to Toledo, Ohio, the Wabash and Erie Canal was the longest ever built in North America. This short hiking trail runs along the berm side of the old canal, which here cannot be distinguished except as a shallow, undrained ravine. The unfinished dirt trail can be a hiker's challenge with uneven ground and



Wabash & Erie Canal Trail (Evansville)

Indiana

States: Indiana

Counties: Vanderburgh

Length: 0.4 miles

Trail end points: Wesselman Park tennis courts to Wesselman Park's northeast service road (crossing the railroad tracks to McDonald Golf Course)

Trail surfaces: Dirt

Trail category: Canal

Trail activities: Walking

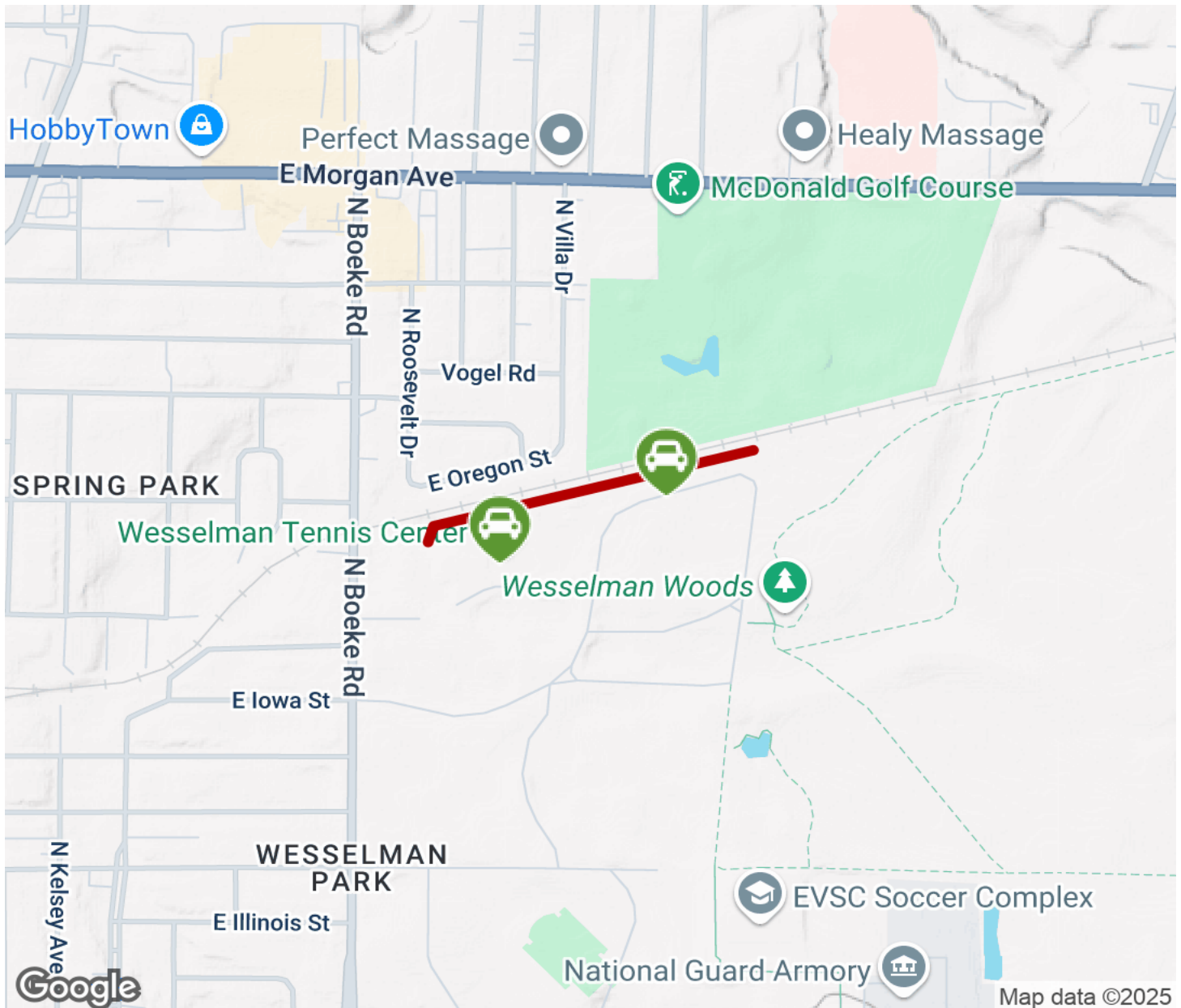
Parking & Trail Access

From the East Lloyd Expressway (Route 66), take the exit at Boeke Road and turn north. Go 0.4 miles and enter Wesselman Park to the right. Continue eastward on the park road until it turns north and then back west. Park on the left and look for an interpretive sign about the canal, located at the edge of the woods on the north side of the road. Enter there and proceed straight ahead to its junction with the main trail running east and west.



Wabash & Erie Canal Trail (Evansville)

Indiana



Trailhead



Restroom



Parking



Water Fountain



Tunnel



TrailLink
by Rails-to-Trails Conservancy

TrailLink.com