



2024

TrailLink Unlimited



Guides



**Vicksburg  
Trailway**  
*Michigan*



## Vicksburg Trailway

Michigan

*The Vicksburg Trailway runs for nearly 2 miles on a former railroad corridor in a small village south of Kalamazoo. The paved*



The Vicksburg Trailway runs for nearly 2 miles on a former railroad corridor in a small village south of Kalamazoo. The paved trail is surrounded by dense woodlands for all but the southernmost stretch, where the corridor emerges into the northeastern neighborhoods of Vicksburg. The Vicksburg Depot Museum sits nearby, offering a number of artifacts significant to the area's extensive railroad history.

Near its middle, the Vicksburg Trailway passes through the Vicksburg Recreation Area. The park features nature trails, a picnic area and a new disc golf course.



# Vicksburg Trailway

Michigan

**States:** Michigan

**Counties:** Kalamazoo

Length: 1.8miles

**Trail end points:** TU Ave. west of Sprinkle Rd.  
to Richardson St. north of North St.

**Trail surfaces:** Asphalt

**Trail category:** Rail-Trail

**Trail activities:** Bike, Inline

Skating, Wheelchair Accessible, Walking, Cross  
Country Skiing

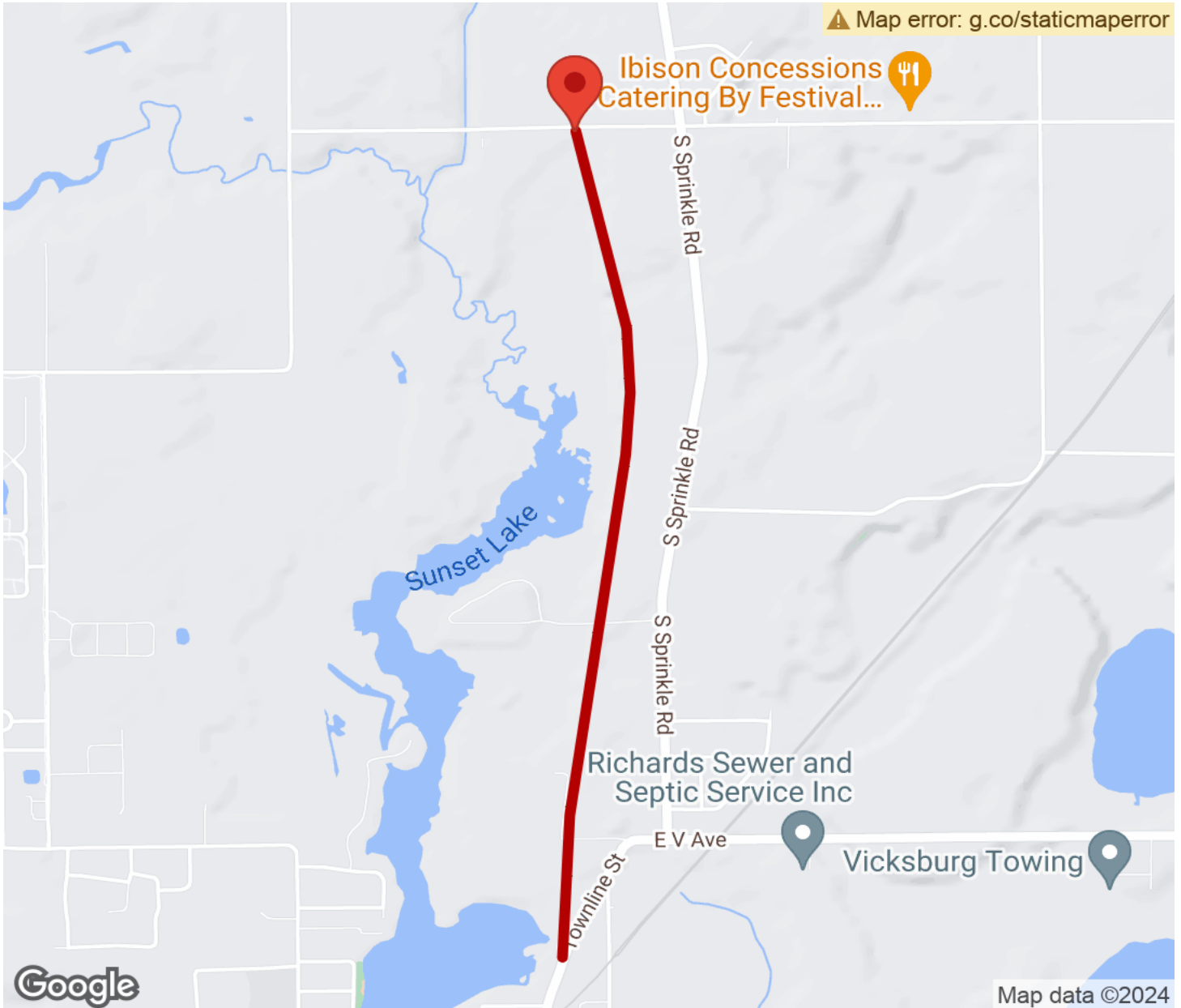
## Parking & Trail Access

Parking for the Vicksburg Trailway is available at the Vicksburg Depot Museum on Richardson Street; the northern trailhead on TU Avenue; and the Vicksburg Recreation Area just off Sprinkle Road.



# Vicksburg Trailway

Michigan



Trailhead



Restroom



Parking



Water Fountain



Tunnel



# TrailLink

by Rails-to-Trails Conservancy

[TrailLink.com](https://www.TrailLink.com)