



2024

TrailLink Unlimited



Guides



**Grass River
Natural Area
Rail Trail**
Michigan



Grass River Natural Area Rail Trail

Michigan

The Grass River Natural Area has a system of six trails through wetlands and woodland, a beautiful retreat south of Lake Bellaire



The Grass River Natural Area has a system of six trails through wetlands and woodland, a beautiful retreat south of Lake Bellaire in northern Michigan. The preserve's rail-trail provides just over 2 miles of crushed-stone trail for walking or biking. Dogs on a leash are also permitted on this trail, but not on the others.

The other trails in the system are pedestrian only with varied surfaces, including gravel, dirt, woodchips, and boardwalks. During the summer you can take guided walks with a naturalist to learn about the wildlife, wildflowers, and habits in the preserve.



Grass River Natural Area Rail Trail

Michigan

States: Michigan

Counties: Antrim

Length: 2.2miles

Trail end points: Comfort Road to Bliss Road

Trail surfaces: Crushed Stone

Trail category: Rail-Trail

Trail activities: Wheelchair

Accessible, Mountain Biking, Walking, Cross
Country Skiing

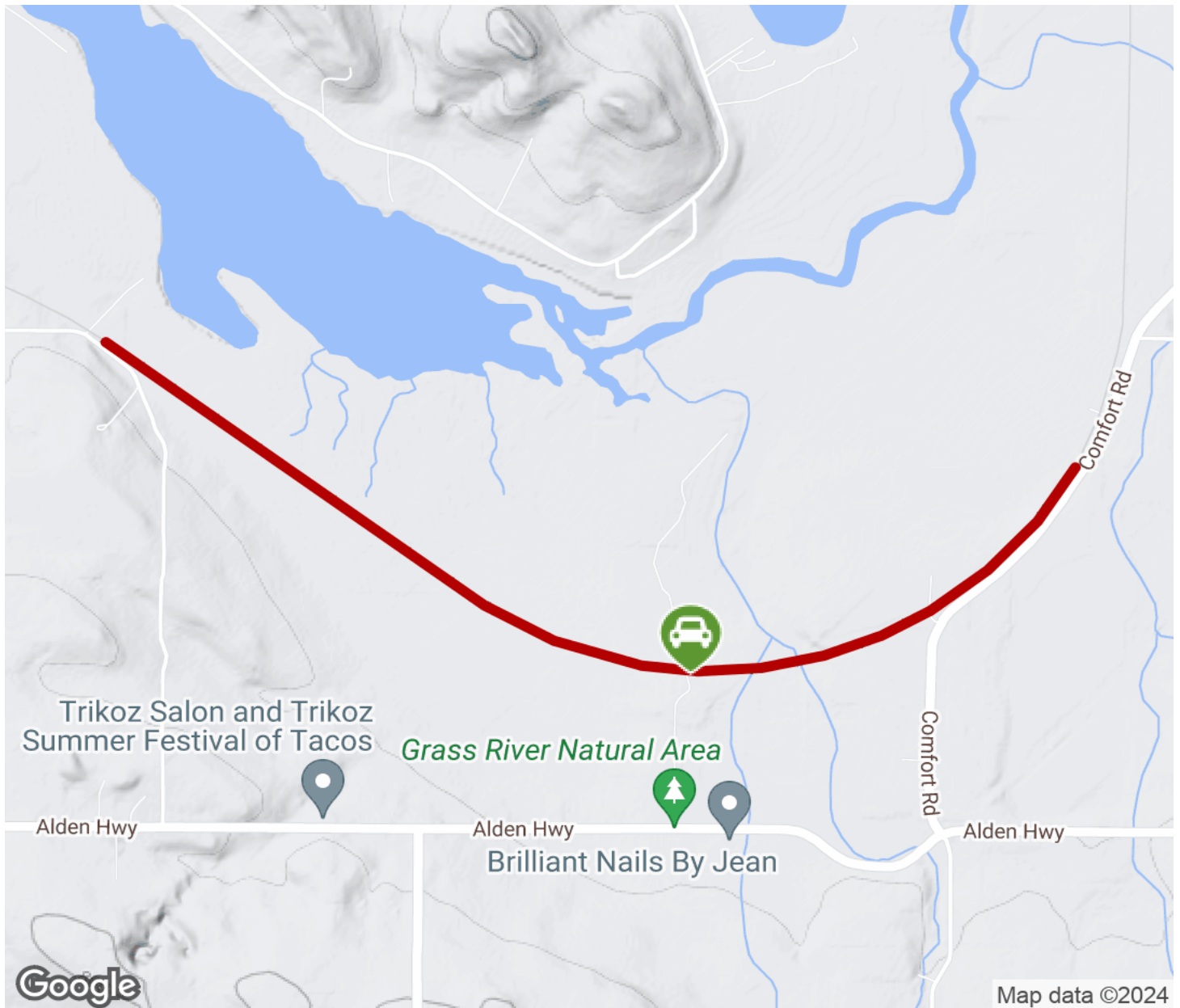
Parking & Trail Access

The entrance to the Grass River Natural Area (6500 Alden Highway, Bellaire) is off Alden Highway (CR 618).



Grass River Natural Area Rail Trail

Michigan



Trailhead



Restroom



Parking



Water Fountain



Tunnel



TrailLink
by Rails-to-Trails Conservancy

TrailLink.com