



2026

TrailLink Unlimited 

Guides



**Iron Range
Trails -
Beechwood to
Gibbs City**
Michigan



Iron Range Trails - Beechwood to Gibbs City

Michigan

The Beechwood to Gibbs City section of the Iron Range Trail system is primarily used by snowmobiles and ATVs. The 6 mile section



The middle of the trail passes by the [Lake Ste. Kathryn Campground](#), a state campground located in Ottawa National Forest.

The Beechwood to Gibbs City section of the Iron Range Trail system is primarily used by snowmobiles and ATVs. The 6 mile section from Beechwood to Gibbs City follows an old spur of the Chicago & Northwestern RR corridor. From its southern end, this section of the Iron Range Trails meets with the [State Line Trail](#).

From Beechwood the trail heads north and follows an old railroad corridor through the bogs, lakes and forests of Michigan's Upper Peninsula, between the areas known as Beechwood and Gibbs City. The rail-trail section of the trail ends here but the trail continues as an ATV/snowmobile trail for another 34 miles through the uninterrupted woods of the UP of Michigan. The trail continues until reaching the [Bergland to Sidnaw Rail-Trail](#) at its northern terminus.



Iron Range Trails - Beechwood to Gibbs City

Michigan

States: Michigan

Counties: Iron

Length: 40.5miles

Trail end points: Bergland to Sidnaw Rail-Trail
to State Line Trail

Trail surfaces: Ballast

Trail category: Rail-Trail

Trail activities: ATV,Horseback

Riding,Mountain

Biking,Snowmobiling,Walking,Cross Country

Skiing

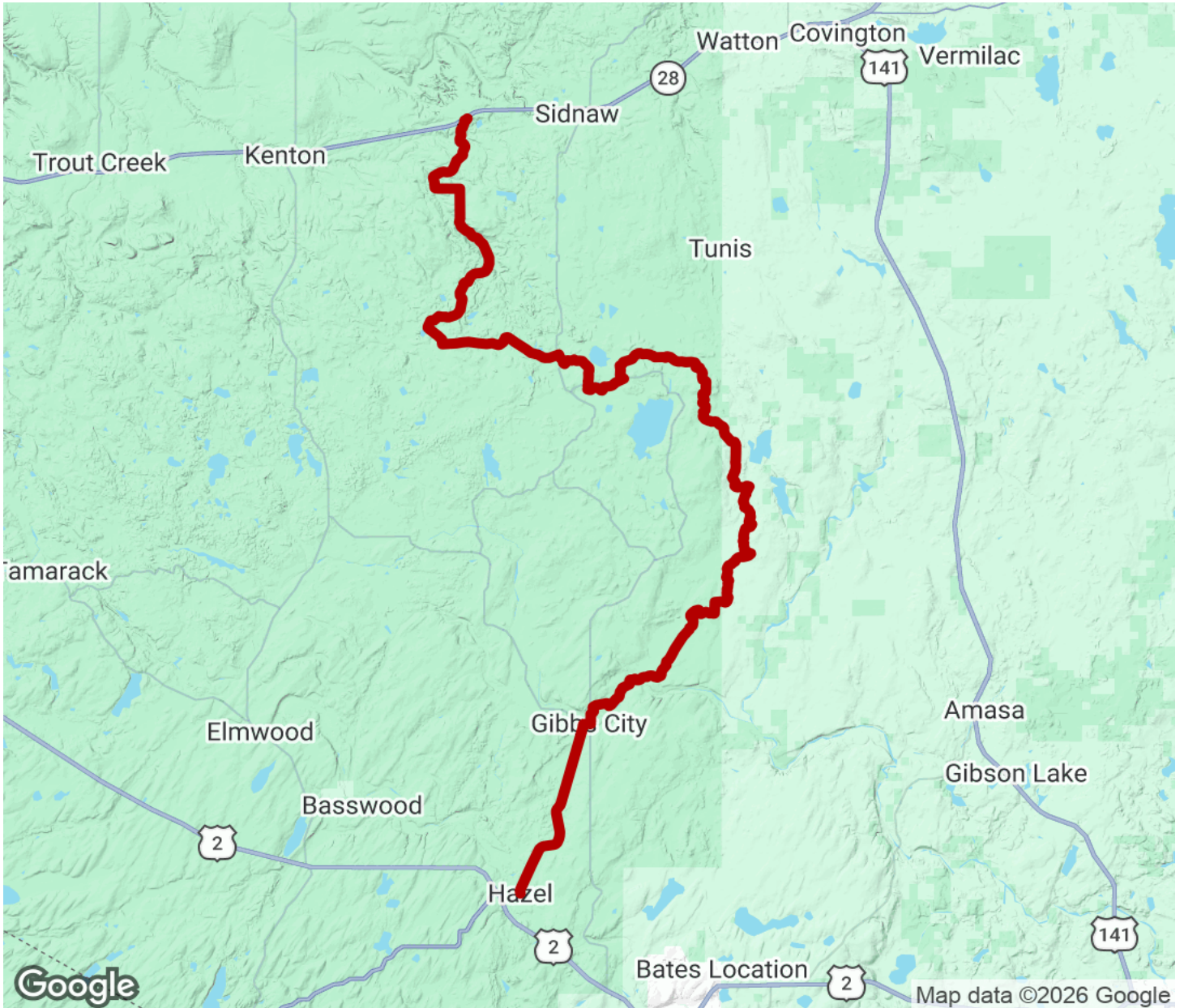
Parking & Trail Access

There is no designated parking for this trail.



Iron Range Trails - Beechwood to Gibbs City

Michigan



Trailhead



Restroom



Parking



Water Fountain



Tunnel



TrailLink
by Rails-to-Trails Conservancy

TrailLink.com