



2025

TrailLink Unlimited 

Guides



Main Trail
Michigan



Main Trail

Michigan

The Main Trail runs for just 0.5 mile along an east-west corridor through the Whitehouse Nature Center. The trail links a series of



The Main Trail runs for just 0.5 mile along an east-west corridor through the Whitehouse Nature Center. The trail links a series of loop trails through the nature center and begins at the visitor center off Farley Road. The 135-acre Whitehouse Nature Center is run by Albion College as an outdoor education facility.



TrailLink
by Rails-to-Trails Conservancy

TrailLink.com



Main Trail

Michigan

States: Michigan

Counties: Calhoun

Length: 0.5miles

Trail end points: 29.5-Mile/Newburg Rd. to
Whitehouse Nature Center, Farley Dr. (Albion)

Trail surfaces: Dirt,Grass,Gravel,Woodchips

Trail category: Rail-Trail

Trail activities: Walking

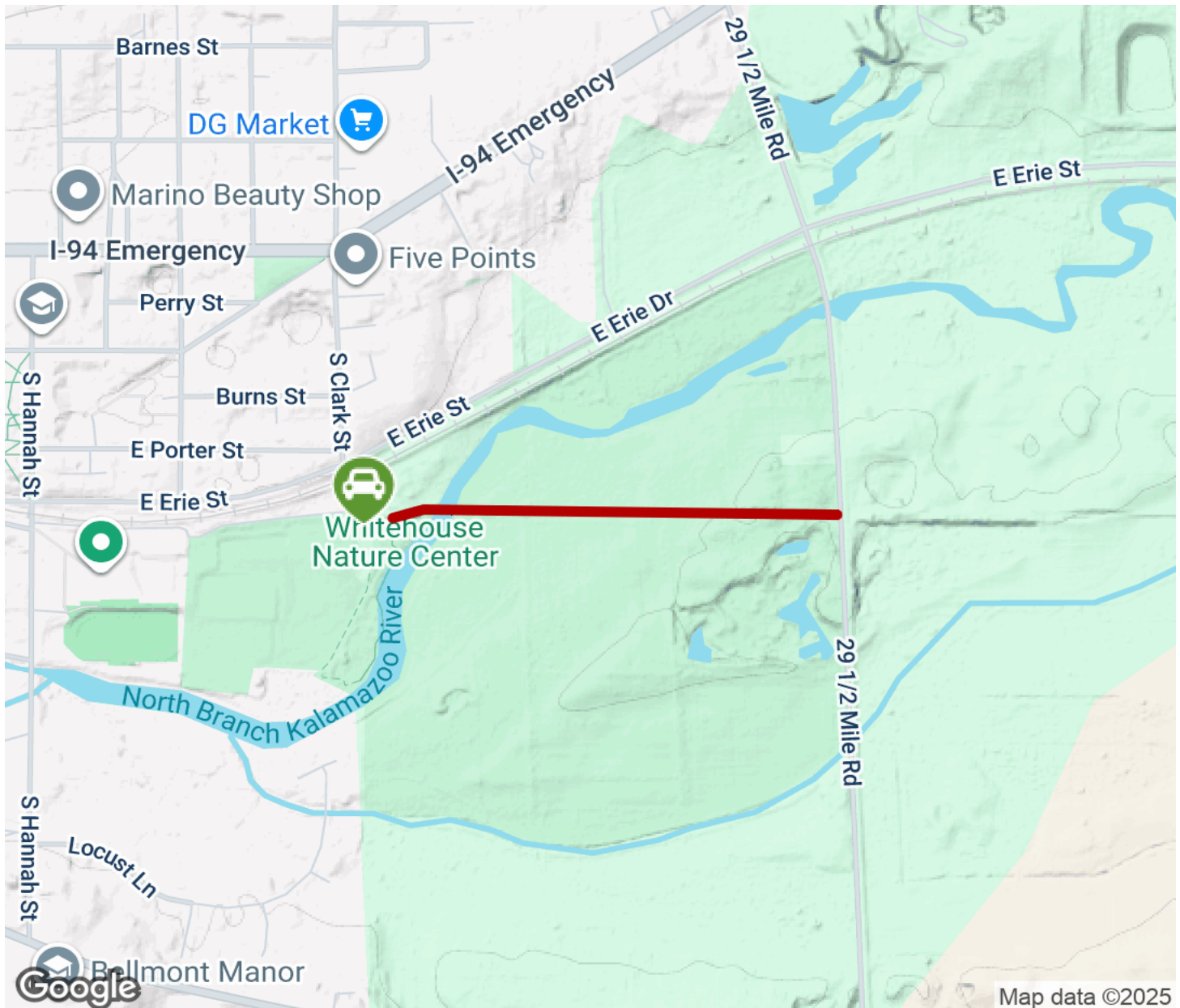
Parking & Trail Access

The Nature Center is located off Farley Drive. From I-94, take Exits 121 or 124 and go 0.25 mile southeast of the Albion College campus (Hannah Street). The center is along the North Branch of the Kalamazoo River.



Main Trail

Michigan



Trailhead



Restroom



Parking



Water Fountain



Tunnel



TrailLink

by Rails-to-Trails Conservancy

[TrailLink.com](https://www.TrailLink.com)