



2025

TrailLink Unlimited 

Guides



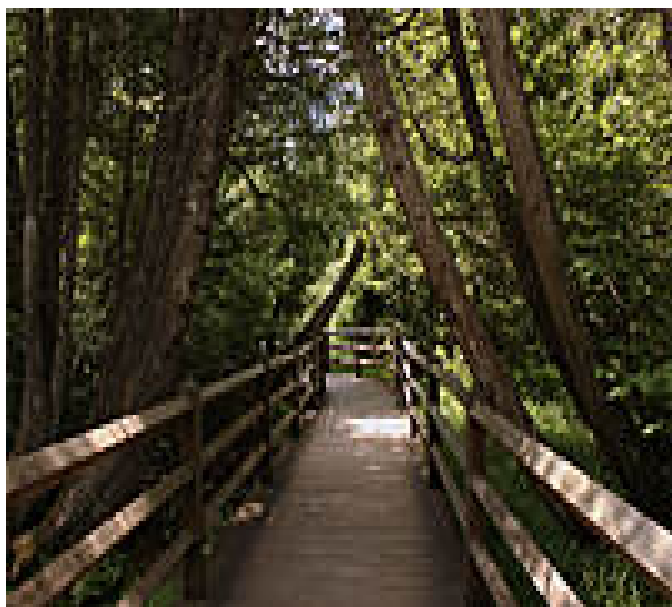
**Tahquamenon
Falls State
Park Trails**
Michigan



Tahquamenon Falls State Park Trails

Michigan

Tahquamenon Falls State Park has a series of six trails for hiking and cross-country skiing, covering more than 22 miles. Some of the



Tahquamenon Falls State Park has a series of six trails for hiking and cross-country skiing, covering more than 22 miles. Some of the trails are loops, while others join the loops. The scenic trails wind through thick woodland and pass by some dramatic waterfalls. These are not biking trails, and are mainly open to hiking-only traffic.



Tahquamenon Falls State Park Trails

Michigan

States: Michigan

Counties: Chippewa

Length: 22.5miles

Trail end points: Tahquamenon Falls State
Park to Tahquamenon Falls State Park

Trail surfaces: Dirt,Grass

Trail category: Rail-Trail

Trail activities: Walking,Cross Country Skiing

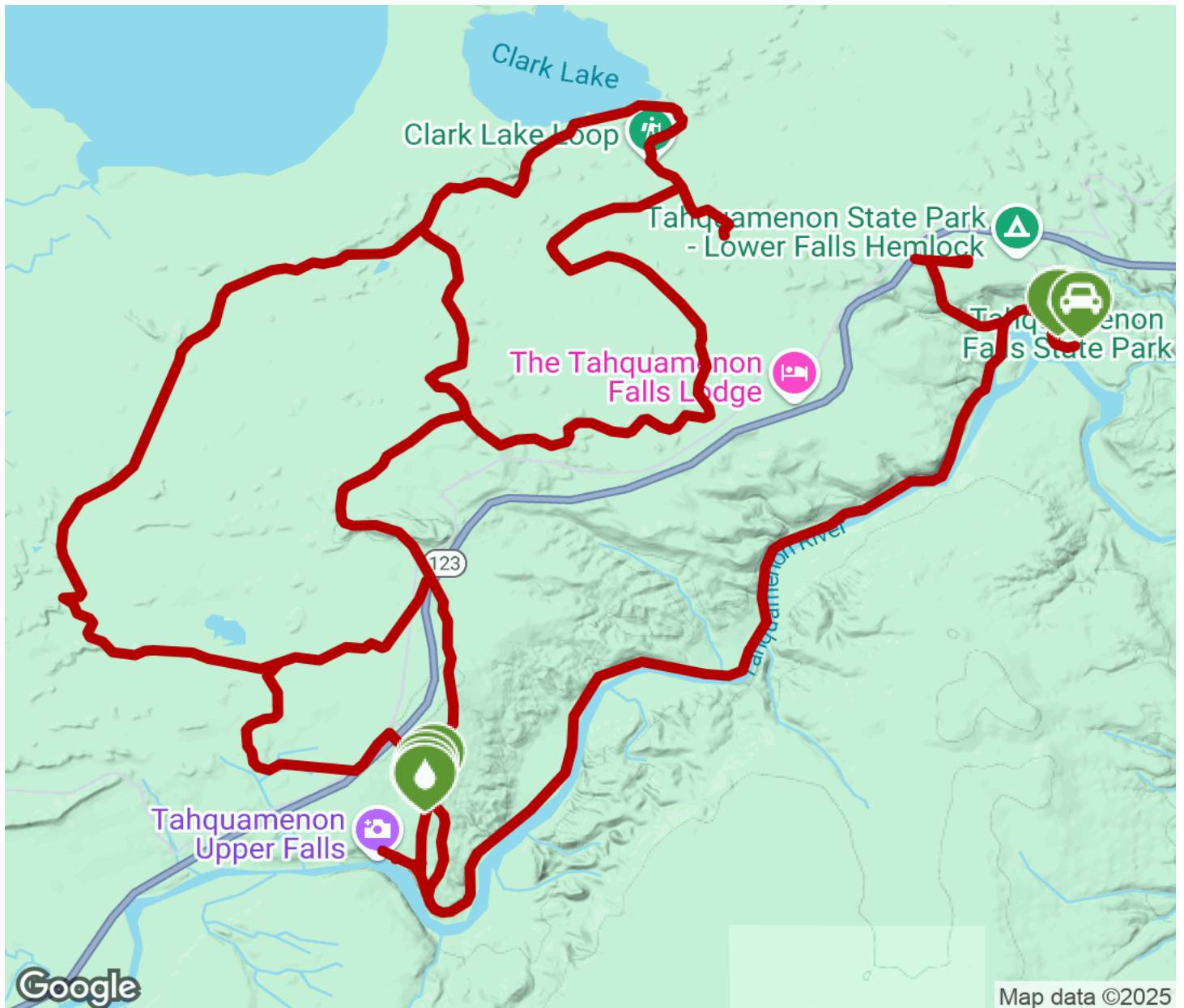
Parking & Trail Access

The visitor center is located at 41382 West M-123, Paradise, MI 49768.



Tahquamenon Falls State Park Trails

Michigan



Trailhead



Restroom



Parking



Water Fountain



Tunnel



TrailLink
by Rails-to-Trails Conservancy

TrailLink.com