



2025

TrailLink Unlimited 

Guides



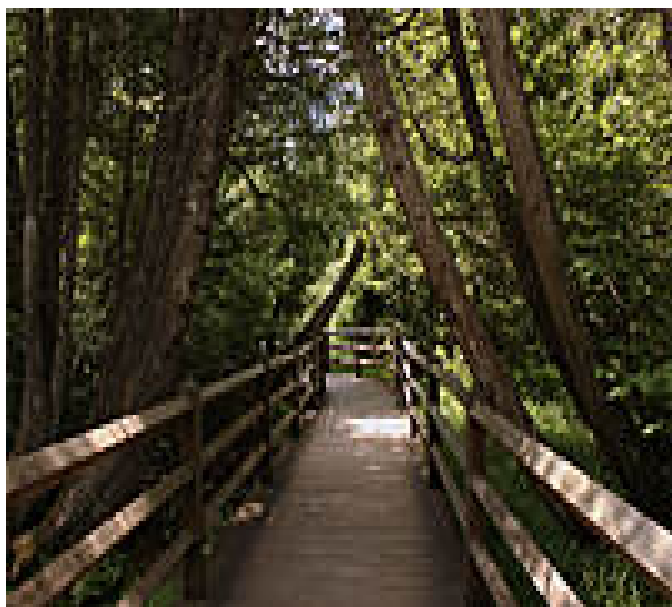
**Tahquamenon  
Falls State  
Park Trails**  
*Michigan*



## Tahquamenon Falls State Park Trails

Michigan

*Tahquamenon Falls State Park has a series of six trails for hiking and cross-country skiing, covering more than 22 miles. Some of the*



Tahquamenon Falls State Park has a series of six trails for hiking and cross-country skiing, covering more than 22 miles. Some of the trails are loops, while others join the loops. The scenic trails wind through thick woodland and pass by some dramatic waterfalls. These are not biking trails, and are mainly open to hiking-only traffic.



# Tahquamenon Falls State Park Trails

*Michigan*

**States:** Michigan

**Counties:** Chippewa

Length: 22.5miles

**Trail end points:** Tahquamenon Falls State  
Park to Tahquamenon Falls State Park

**Trail surfaces:** Dirt,Grass

**Trail category:** Rail-Trail

**Trail activities:** Walking,Cross Country Skiing

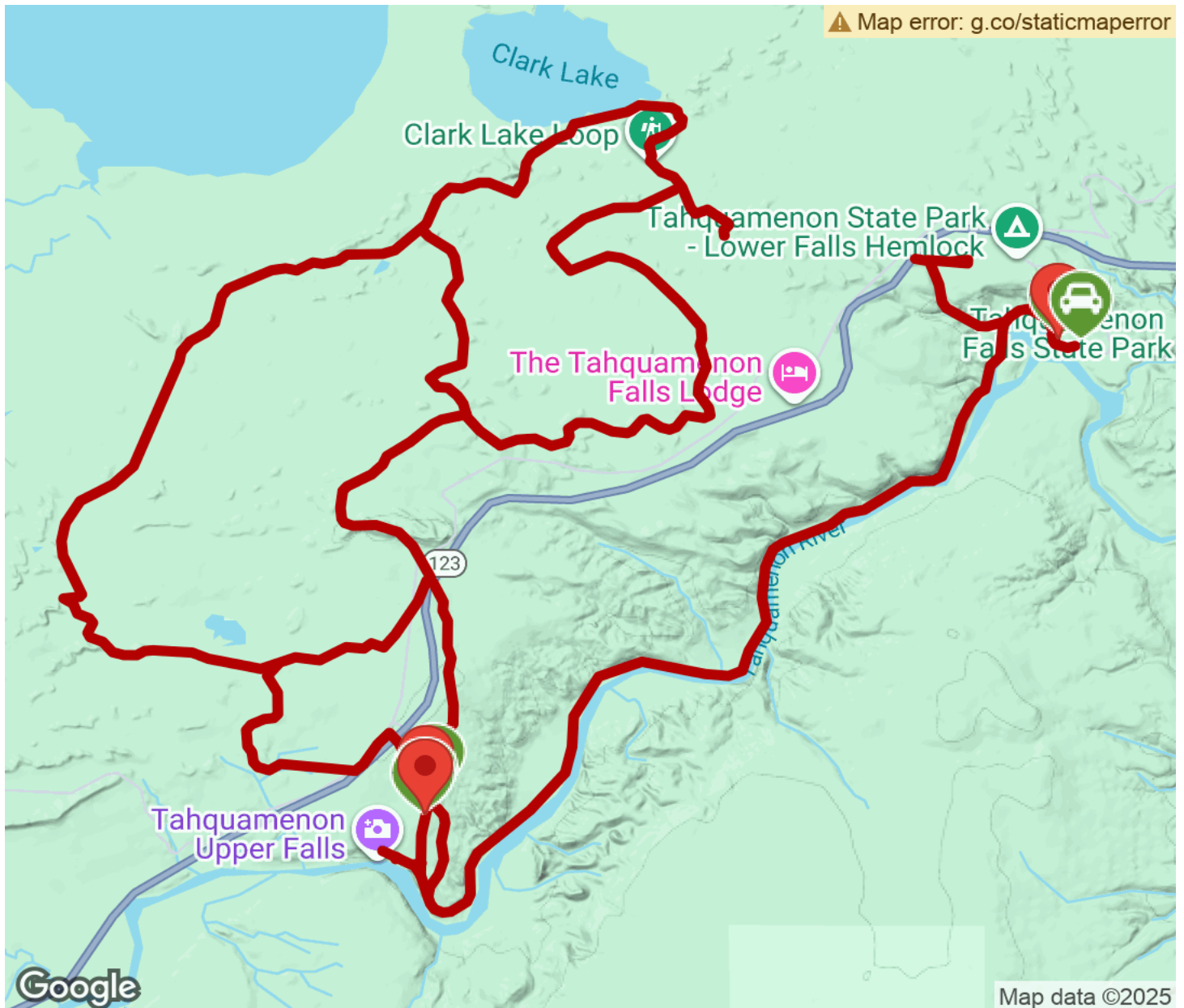
## Parking & Trail Access

The visitor center is located at 41382 West M-123, Paradise, MI 49768.



# Tahquamenon Falls State Park Trails

Michigan



Trailhead



Restroom



Parking



Water Fountain



Tunnel



**TrailLink**  
by Rails-to-Trails Conservancy

**TrailLink.com**